

SPECIFICATIONS

DESCRIPTION:

MR16 hanging pendant fixture with perforated hood. Suitable for wet location installation.

MATERIAL:

Standard overall material is 6061 aluminum.

FINISH:

- AA - Anodized Aluminum
- AP - Powder Coat Aluminum
- BK - Powder Coat Black
- BZ - Powder Coat Bronze
- WT - Powder Coat White

ELECTRICAL:

Lamp - 12V Halogen MR16 lamp, bi-pin GX5.3 base, 50W max, included
 Voltage - 12 VAC output transformer required, not included.
 Cord - 15ft SJO cord, included.

MOUNTING:

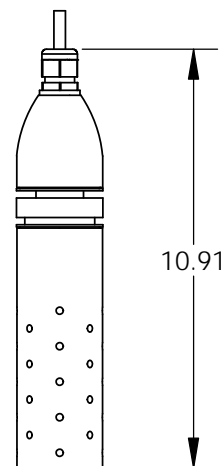
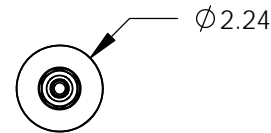
Fixture is equipped with a cord to hang from a tree/surface.

OPTIONS:

- Lenses/ Color Filters
 - LA-2 Prismatic lens
 - LA-3 Linear spread lens
 - LA-4 Soft focus lens (diffused)
 - LA-5 Moonlight lens
 - LA-6 Blue lens
 - Louvers
 - LA-1 Hexcell Louver (Black)
- See fixture accessories for more informaton.

RATING:

Meets UL 1598, the UL standard for safety for luminaires. Wet/damp/dry locations.



PROJECT:
APPROVED:
NOTE:
TYPE:

HEVI LITE, INC.
 7524 Deering Ave, Canoga Park, CA 91303
 Tel., (818) 710-0728 - Fax (818) 710-0756
 Web Site <http://www.hevilite.com>

CUSTOM NUMBER:
C01135