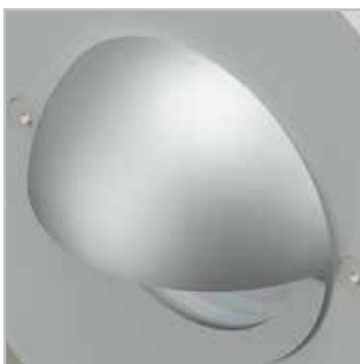




HEVI LITE

Architectural, Landscape & Custom Lighting

Featuring
HEVI LED Series



HEVI LITE

Hevi Lite is located in the sunny, warm heart of San Fernando Valley in California. It is here that we develop, design and manufacture quality fixtures for lighting specifiers and architects. This is where we take concept to end product. Solid aluminum, brass and stainless billet are machined, formed, and assembled by experienced craftsmen in our factory.

Our products are born in California and shipped across the globe. Smart designers choose Hevi Lite to fit with almost any architectural style, from American Craftsman to Post Modern. Hevi Lite fixtures will blend and fit unobtrusively onto buildings and landscapes, yet when studied closely you will find that our products are beautifully designed to stand on their own.

Hold a Hevi Lite fixture in your hand and you will see the care and detail that is put into each product. You will also feel the fit, finish and durability of Hevi Lite. Our fixtures are made to last, to take a beating in the harshest environments. At Hevi Lite we take pride in our design and quality. Your continued feedback and support is well appreciated.

Hevi Lite
Made in California



CONTENTS



■ GWS Step Lights	2
■ BDS Step Lights	6
■ Accent Lights 12v	8
■ Accent Lights 120v/HID	12
■ Flood Lights	18
■ Wall & Surface Mount	20
■ Path Lights	26
■ Sign/Post Lights	28
■ In-grade Up Lights	32
■ LED Lights	36
■ Customs	38
■ Finishes	39
■ Accessories	40

GWS STEP LIGHTS

HL-105

Compact low voltage square step light with machined cross bars to protect the lens and fixture. Suitable for wet location installations.

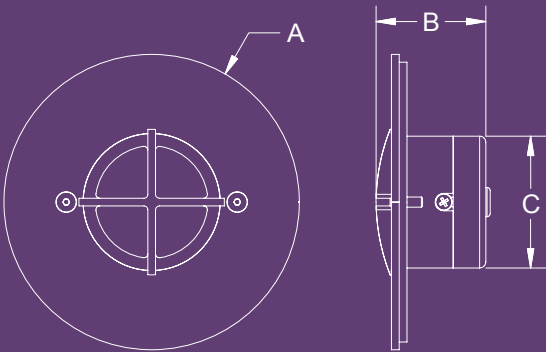
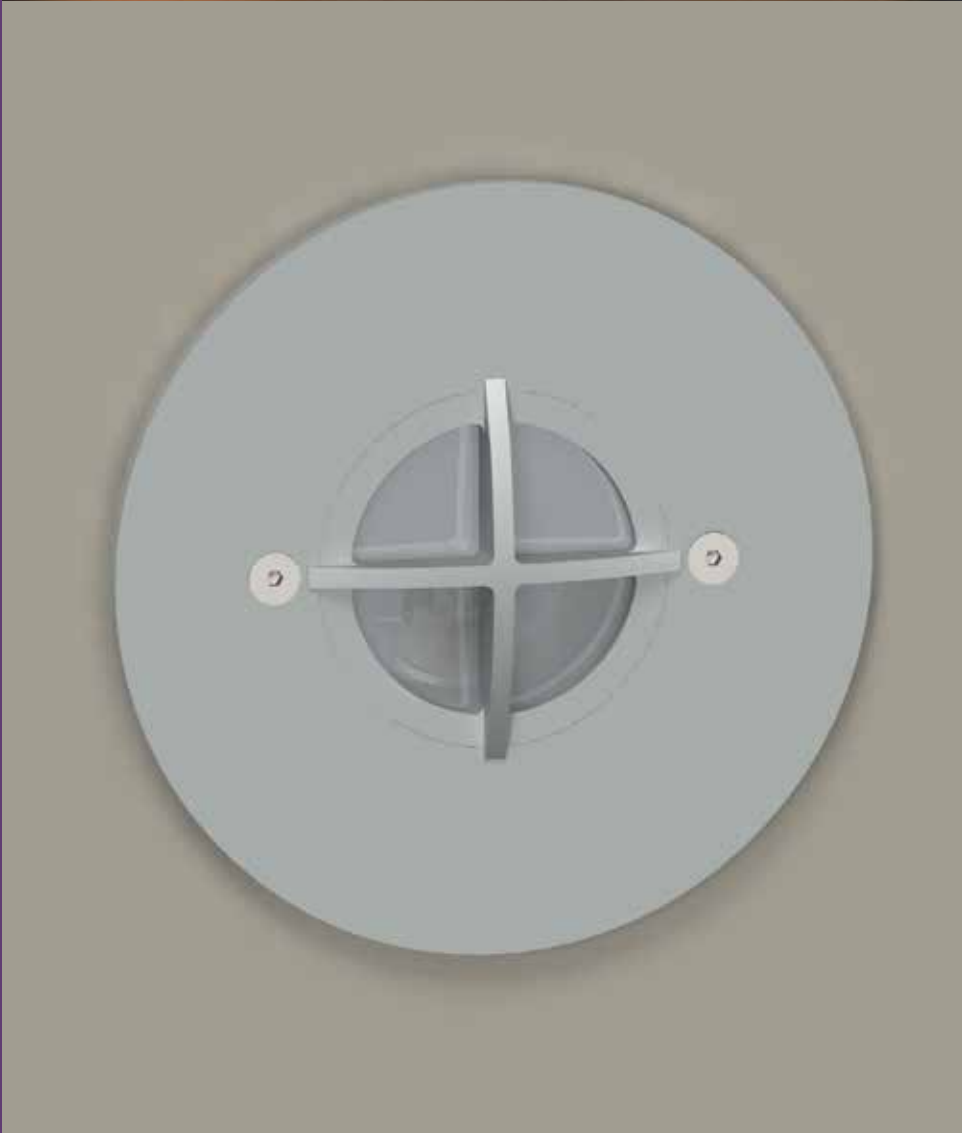
Material:
HL-105 - Machined Aluminum, Standard
HL-105-2 - Machined Brass Trim
HL-105-1 - Machined Stainless Steel Trim

Finish:
AA - Anodized Satin Aluminum
AP - Aluminum Powder Coat
BK - Black Powder Coat
BZ - Bronze Powder Coat
WT - White Powder Coat
N - Natural, for stainless steel & brass

Lamping
Halogen - 10-20W G4 Bi-Pin lamp, included
LED - 1W or 3W, 3000K CCT standard

Wattage:
20W max

Voltage:
12V fixture - transformer required, not included



12V	A	B	C
HL-105	4 3/4"	1 3/4"	2 1/8"



HL-106

Compact low voltage square step light with machined cross bars to protect the lens and fixture. Suitable for wet location installations.

Material:

HL-106 - Machined Aluminum, Standard
HL-106-2 - Machined Brass Trim
HL-106-1 - Machined Stainless Steel Trim

Finish:

AA - Anodized Satin Aluminum
AP - Aluminum Powder Coat
BK - Black Powder Coat
BZ - Bronze Powder Coat
WT - White Powder Coat
N - Natural, for stainless steel & brass

Lamping:

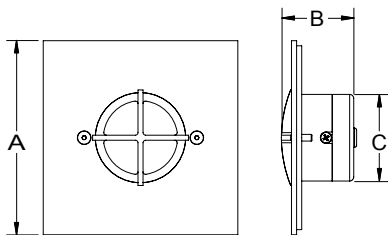
Halogen - 10-20W G4 Bi-Pin lamp, included
LED - 1W or 3W, 3000K CCT standard

Wattage:

20W max

Voltage:

12V fixture - transformer required, not included



12V	A	B	C
HL-106	4 3/4"	1 3/4"	2 1/8"



HL-107

Compact low voltage round step light with machined eyelid to reduce visual glare. Suitable for wet location installations.

Material:

HL-107 - Machined Aluminum, Standard
HL-107-2 - Machined Brass Trim
HL-107-1 - Machined Stainless Steel Trim

Finish:

AA - Anodized Satin Aluminum
AP - Aluminum Powder Coat
BK - Black Powder Coat
BZ - Bronze Powder Coat
WT - White Powder Coat
N - Natural, for stainless steel & brass

Lamping:

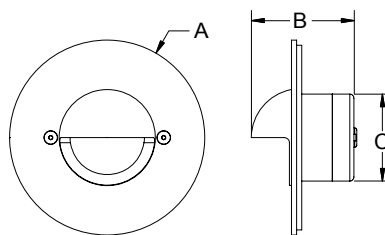
Halogen - 10-20W G4 Bi-Pin lamp, included
LED - 1W or 3W, 3000K CCT standard

Wattage:

20W max

Voltage:

12V fixture - transformer required, not included



12V	A	B	C
HL-107	4 3/4"	2 1/2"	2 1/8"



HL-109

Compact low voltage square step light, with square open lens. Suitable for wet location installations.

Material:

HL-109 - Machined Aluminum, Standard
HL-109-2 - Machined Brass Trim
HL-109-1 - Machined Stainless Steel Trim

Finish:

AA - Anodized Satin Aluminum
AP - Aluminum Powder Coat
BK - Black Powder Coat
BZ - Bronze Powder Coat
WT - White Powder Coat
N - Natural, for stainless steel & brass

Lamping:

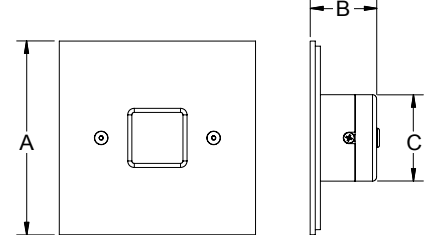
Halogen - 10-20W G4 Bi-Pin lamp, included
LED - 1W or 3W, 3000K CCT standard

Wattage:

20W max

Voltage:

12V fixture - transformer required, not included



12V	A	B	C
HL-109	4 3/4"	1 5/8"	2 1/8"

GWS Step Lights



HL-115

Compact low voltage round step light with open lens. Suitable for wet location installations.

Material:

HL-115 - Machined Aluminum, Standard
HL-115-2 - Machined Brass Trim
HL-115-1 - Machined Stainless Steel Trim

Finish:

AA - Anodized Satin Aluminum
AP - Aluminum Powder Coat
BK - Black Powder Coat
BZ - Bronze Powder Coat
WT - White Powder Coat
N - Natural, for stainless steel & brass

Lamping:

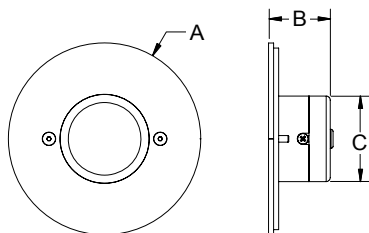
Halogen - 10-20W G4 Bi-Pin lamp, included
LED - 1W or 3W, 3000K CCT standard

Wattage:

20W max

Voltage:

12V fixture - transformer required, not included



12V	A	B	C
HL-115	4 3/4"	1 1/2"	2 1/8"



HL-116

Compact low voltage square step light with open lens. Suitable for wet location installations.

Material:

HL-116 - Machined Aluminum, Standard
HL-116-2 - Machined Brass Trim
HL-116-1 - Machined Stainless Steel Trim

Finish:

AA - Anodized Satin Aluminum
AP - Aluminum Powder Coat
BK - Black Powder Coat
BZ - Bronze Powder Coat
WT - White Powder Coat
N - Natural, for stainless steel & brass

Lamping:

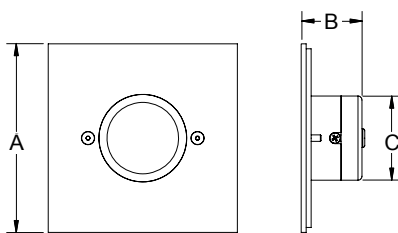
Halogen - 10-20W G4 Bi-Pin lamp, included
LED - 1W or 3W, 3000K CCT standard

Wattage:

20W max

Voltage:

12V fixture - transformer required, not included



12V	A	B	C
HL-116	4 3/4"	1 1/2"	2 1/8"



HL-117

Compact low voltage square step light with machined eyelid to reduce glare. Suitable for wet location installations.

Material:

HL-117 - Machined Aluminum, Standard
HL-117-2 - Machined Brass Trim
HL-117-1 - Machined Stainless Steel Trim

Finish:

AA - Anodized Satin Aluminum
AP - Aluminum Powder Coat
BK - Black Powder Coat
BZ - Bronze Powder Coat
WT - White Powder Coat
N - Natural, for stainless steel & brass

Lamping:

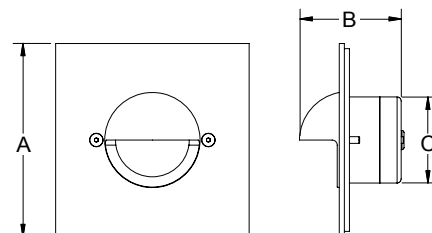
Halogen - 10-20W G4 Bi-Pin lamp, included
LED - 1W or 3W, 3000K CCT standard

Wattage:

20W max

Voltage:

12V fixture - transformer required, not included



12V	A	B	C
HL-117	4 3/4"	2 1/2"	2 1/8"

Step Light Order Guide

HL-100 Series - HL-105, HL-106, HL-107, HL-108, HL-109, HL-115, HL-116, HL-117 and HL-1181

ORDER SPECIFICATION

Fixture	Finish	Lamping	Voltage	Options/Access.
---------	--------	---------	---------	-----------------

SAMPLE ORDER SPECIFICATION

HL-106 - BZ - 20 - 12 - 90

(HL-105-BZ-20-12-90 Aluminum trim, bronze powder coat finish, 20W halogen bi-pin lamp, 12 volts and a linear spread lens)

MATERIAL:

Standard overall material is 6061 aluminum.

HL-1xx - Machined aluminum trim (Standard)

HL-1xx-1 - Machined stainless steel trim

HL-1xx-2 - Machined brass trim

FINISH:

AA - Anodized Satin Aluminum

AP - Aluminum Powder Coat

BK - Black Powder Coat

BZ - Bronze Powder Coat

WT - White Powder Coat

N - Natural, for Stainless Steel and Brass

LAMPING:

Halogen

10 - 10W lamp

20 - 20W lamp

LED - High output LED, warm white
(3000K CCT) standard, others available.

1LED - 1x1W LED

3LED - 3x1W LED

VOLTAGE:

12 - 12 VAC

OPTIONS:

Lenses - Standard lens is diffused with internal half shield for reduced visual glare.

90 - Linear spread lens

92 - Full diffused lens (no half shield)

93 - Prismatic lens

98 - Internal half shield for above lenses

T - Thermal

HL-200 Series - HL-210, HL-220, HL-230 and HL-240

ORDER SPECIFICATION

Fixture	Finish	Lamping	Voltage	Options/Access.
---------	--------	---------	---------	-----------------

SAMPLE ORDER SPECIFICATION

HL-210 - AA - 35 - 120 - 92

(HL-210-AA-35-120-92 Aluminum trim, satin anodized aluminum finish, 35W halogen bi-pin lamp, 120 volt and a full diffused lens)

MATERIAL:

Standard overall material is 6061 aluminum.

HL-2xx - Machined aluminum trim (Standard)

HL-2xx-1 - Machined stainless steel trim

HL-2xx-2 - Machined brass trim

FINISH:

AA - Anodized Satin Aluminum

AP - Aluminum Powder Coat

BK - Black Powder Coat

BZ - Bronze Powder Coat

WT - White Powder Coat

N - Natural, for Stainless Steel and Brass

LAMPING:

Halogen

10 - 10W lamp

20 - 20W lamp

35 - 35W lamp

50 - 50W lamp (12V fixture only)

LED - High output LED, warm white
(3000K CCT) standard, others available.

1LED - 1x1W LED

3LED - 3x1W LED

VOLTAGE:

12 - 12 VAC unit

120 - 120 VAC unit (integral transformer)

OPTIONS:

Lenses - Standard lens is diffused with internal half shield for reduced visual glare.

90 - Linear spread lens

92 - Full diffused lens (no half shield)

93 - Prismatic lens

98 - Internal half shield for above lenses

T - Thermal

BDS STEP LIGHTS

HL-210

Specification grade round step light with or without internal 120/12V transformer and machined cross bars to protect the lens and fixture. Suitable for wet location installations.

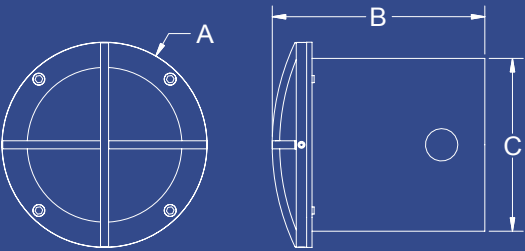
Material:
HL-210 - Machined Aluminum, Standard
HL-210-2 - Machined Brass Trim
HL-210-1 - Machined Stainless Steel Trim

Finish:
AA - Anodized Satin Aluminum
AP - Aluminum Powder Coat
BK - Black Powder Coat
BZ - Bronze Powder Coat
WT - White Powder Coat
N - Natural, for stainless steel & brass

Lamping:
Halogen - 10-50W G4 Bi-Pin lamp, included
LED - 1W or 3W, 3000K CCT standard

Wattage:
35W max - 120V fixture
50W max - 12V fixture

Voltage:
12V fixture - transformer required, not included
120V fixture - Integral 120/12V transformer



12V/120V	A	B	C
HL-210-12	4 3/4"	4 15/16"	4"
HL-210-120	4 3/4"	4 15/16"	4"



HL-220

Specification grade square step light with or without internal 120/12V transformer and machined cross bars to protect the lens and fixture. Suitable for wet location installations.

Material:

HL-220 - Machined Aluminum, Standard
HL-220-2 - Machined Brass Trim
HL-220-1 - Machined Stainless Steel Trim

Finish:

AA - Anodized Satin Aluminum
AP - Aluminum Powder Coat
BK - Black Powder Coat
BZ - Bronze Powder Coat
WT - White Powder Coat
N - Natural, for stainless steel & brass

Lamping:

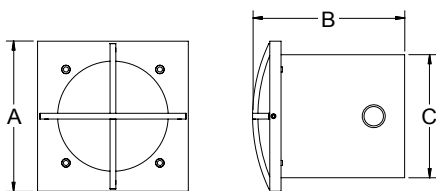
Halogen - 10-50W G4 Bi-Pin lamp, included
LED - 1W or 3W, 3000K CCT standard

Wattage:

35W max - 120V fixture
50W max - 12V fixture

Voltage:

12V fixture - Transformer required, not included
120V fixture - Integral 120/12V transformer



12V/120V	A	B	C
HL-220-12	4 7/8"	4 15/16"	4"
HL-220-120	4 7/8"	4 15/16"	4"



HL-230

Specification grade round step light with or without internal 120/12V electronic transformer. Suitable for wet location installations.

Material:

HL-230 - Machined Aluminum, Standard
HL-230-2 - Machined Brass Trim
HL-230-1 - Machined Stainless Steel Trim

Finish:

AA - Anodized Satin Aluminum
AP - Aluminum Powder Coat
BK - Black Powder Coat
BZ - Bronze Powder Coat
WT - White Powder Coat
N - Natural, for stainless steel & brass

Lamping:

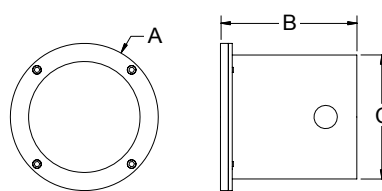
Halogen - 10-50W G4 Bi-Pin lamp, included
LED - 1W or 3W, 3000K CCT standard

Wattage:

35W max - 120V fixture
50W max - 12V fixture

Voltage:

12V fixture - Transformer required, not included
120V fixture - Integral 120/12V transformer



12V/120V	A	B	C
HL-230-12	4 3/4"	4 3/8"	4"
HL-230-120	4 3/4"	4 3/8"	4"



HL-240

Specification grade square step light with or without internal 120/12V electronic transformer. Suitable for wet location installations.

Material:

HL-240 - Machined Aluminum, Standard
HL-240-2 - Machined Brass Trim
HL-240-1 - Machined Stainless Steel Trim

Finish:

AA - Anodized Satin Aluminum
AP - Aluminum Powder Coat
BK - Black Powder Coat
BZ - Bronze Powder Coat
WT - White Powder Coat
N - Natural, for stainless steel & brass

Lamping:

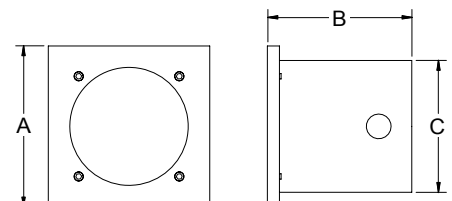
Halogen - 10-50W G4 Bi-Pin lamp, included
LED - 1W or 3W, 3000K CCT standard

Wattage:

35W max - 120V fixture
50W max - 12V fixture

Voltage:

12V fixture - Transformer required, not included
120V fixture - Integral 120/12V transformer



12V/120V	A	B	C
HL-240-12	4 7/8"	4 3/8"	4"
HL-240-120	4 7/8"	4 3/8"	4"

ACCENT LIGHTS 12v

HL-360

The specification grade MR16 halogen adjustable accent light.
Suitable for wet location installations.

Material:

HL-360 - Machined Aluminum, Standard

HL-360-2 - Machined Brass

HL-360-1 - Machined Stainless Steel

Finish:

AA - Anodized Satin Aluminum

AP - Aluminum Powder Coat

BK - Black Powder Coat

BZ - Bronze Powder Coat

WT - White Powder Coat

N - Natural, for stainless steel & brass

Lamping:

Halogen - MR16 Bi-Pin lamp, not Included

LED - 3W or 8W, 3000K CCT standard

Wattage:

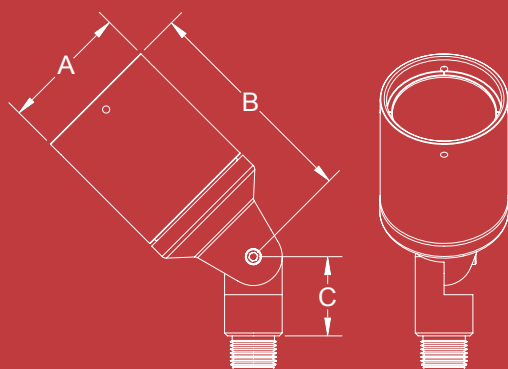
50W max

Voltage:

12 Volts - transformer required, not included

Mounting:

1/2" NPS thread



12V	A	B	C
HL-360	2 1/4"	3 7/8"	1 3/8"



HL-300

Compact MR8 adjustable accent light.
Suitable for wet location installations.

Material:

HL-300 - Machined Aluminum, Standard
HL-300-2 - Machined Brass
HL-300-1 - Machined Stainless Steel

Finish:

AA - Anodized Satin Aluminum
AP - Aluminum Powder Coat
BK - Black Powder Coat
BZ - Bronze Powder Coat
WT - White Powder Coat
N - Natural, for stainless steel & brass

Lamping:

Halogen - MR8 Bi-Pin lamp, not Included
LED - 1W, 3000K CCT standard

Wattage:

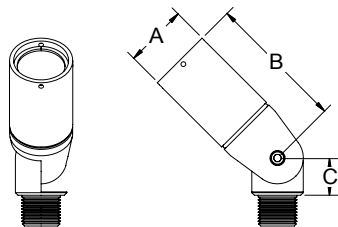
35W max

Voltage:

12 Volts - transformer required, not included
LED - Remote 350mA driver required

Mounting:

1/2" NPS thread



12V	A	B	C
HL-300	1 1/4"	2 11/16"	3/4"



HL-306

Compact MR8 surface mount accent light.
Suitable for wet location installations as an up or down light.

Material:

HL-306 - Machined Aluminum, Standard
HL-306-2 - Machined Brass
HL-306-1 - Machined Stainless Steel

Finish:

AA - Anodized Satin Aluminum
AP - Aluminum Powder Coat
BK - Black Powder Coat
BZ - Bronze Powder Coat
WT - White Powder Coat
N - Natural, for stainless steel & brass

Lamping:

Halogen - MR8 Bi-Pin lamp, not Included
LED - 1W, 3000K CCT standard

Wattage:

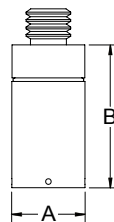
35W max

Voltage:

12 Volts - transformer required, not included
LED - Remote 350mA driver required

Mounting:

1/2" NPS thread



12V	A	B	C
HL-306	1 1/4"	2 3/8"	



HL-310

MR11 adjustable accent light.
Suitable for wet location installations.

Material:

HL-310 - Machined Aluminum, Standard
HL-310-2 - Machined Brass

Finish:

AA - Anodized Satin Aluminum
AP - Aluminum Powder Coat
BK - Black Powder Coat
BZ - Bronze Powder Coat
WT - White Powder Coat
N - Natural, for stainless steel & brass

Lamping:

Halogen - MR11 Bi-Pin lamp, not Included
LED - 1W or 3W, 3000K CCT standard

Wattage:

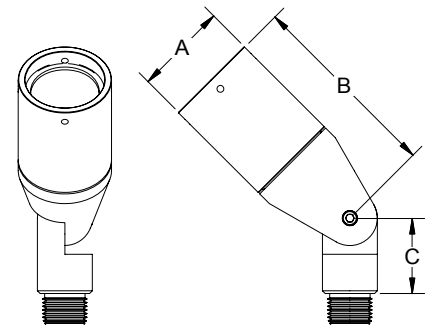
35W max

Voltage:

12 Volts - transformer required, not included
LED - Remote 350mA driver required

Mounting:

1/2" NPS thread



12V	A	B	C
HL-310	1 11/16"	3 9/16"	1 3/8"

Accent Lights 12v



HL-336

MR16 surface mount accent light. Suitable for wet location installations as an up or down light.

Material:

HL-336 - Machined Aluminum, Standard
HL-336-2 - Machined Brass

Finish:

AA - Anodized Satin Aluminum
AP - Aluminum Powder Coat
BK - Black Powder Coat
BZ - Bronze Powder Coat
WT - White Powder Coat
N - Natural, for stainless steel & brass

Lamping:

Halogen - MR16 Bi-Pin lamp, not Included
LED - 3W or 8W, 3000K CCT standard

Wattage:

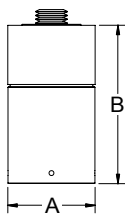
50W max

Voltage:

12 Volts - transformer required, not included

Mounting:

1/2" NPS thread



12V	A	B	C
HL-336	2 1/4"	4"	



HL-360

The specification grade MR16 adjustable accent light. Suitable for wet location installations.

Material:

HL-360 - Machined Aluminum, Standard
HL-360-2 - Machined Brass
HL-360-1 - Machined Stainless Steel

Finish:

AA - Anodized Satin Aluminum
AP - Aluminum Powder Coat
BK - Black Powder Coat
BZ - Bronze Powder Coat
WT - White Powder Coat
N - Natural, for stainless steel & brass

Lamping:

Halogen - MR16 Bi-Pin lamp, not Included
LED - 3W or 8W, 3000K CCT standard

Wattage:

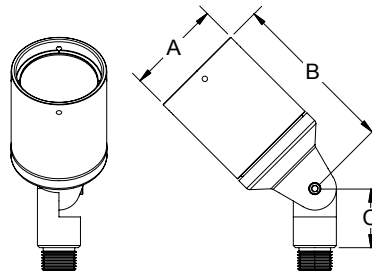
50W max

Voltage:

12 Volts - transformer required, not included

Mounting:

1/2" NPS thread



12V	A	B	C
HL-360	2 1/4"	3 7/8"	1 3/8"



HL-365

Powerful adjustable accent light designed specifically for use with the 75W MR16 lamp. Suitable for wet location installations.

Material:

HL-365 - Machined Aluminum, Standard
HL-365-2 - Machined Brass

Finish:

AA - Anodized Satin Aluminum
AP - Aluminum Powder Coat
BK - Black Powder Coat
BZ - Bronze Powder Coat
WT - White Powder Coat
N - Natural, for stainless steel & brass

Lamping:

Halogen - MR16 Bi-Pin lamp, not Included
LED - 3W or 8W, 3000K CCT standard

Wattage:

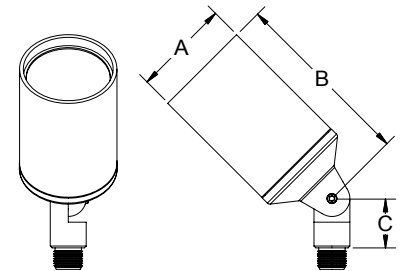
75W max

Voltage:

12 Volts - transformer required, not included

Mounting:

1/2" NPS thread



12V	A	B	C
HL-365	2 11/16"	5 1/8"	1 3/8"



HL-367

MR16 adjustable accent light with FLUSH lens bezel. Suitable for wet location installations

Material:

HL-367 - Machined Aluminum, Standard
HL-367-2 - Machined Brass

Finish:

AA - Anodized Satin Aluminum
AP - Aluminum Powder Coat
BK - Black Powder Coat
BZ - Bronze Powder Coat
WT - White Powder Coat
N - Natural, for stainless steel & brass

Lamping:

Halogen - MR16 Bi-Pin lamp, not Included
LED - 3W or 8W, 3000K CCT standard

Wattage:

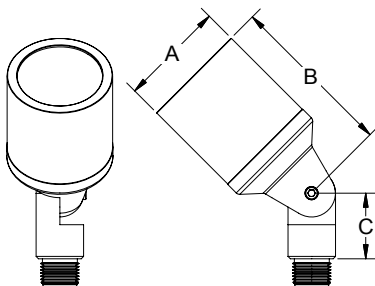
50W max

Voltage:

12 Volts - transformer required, not included

Mounting:

1/2" NPS thread



12V	A	B	C
HL-367	2 1/4"	3 1/2"	1 3/8"



HL-368

Specification grade MR16 adjustable accent light with LONG BEZEL for reduced visual glare. Suitable for wet location installations.

Material:

HL-368 - Machined Aluminum, Standard
HL-368-2 - Machined Brass

Finish:

AA - Anodized Satin Aluminum
AP - Aluminum Powder Coat
BK - Black Powder Coat
BZ - Bronze Powder Coat
WT - White Powder Coat

Lamping:

Halogen - MR16 Bi-Pin lamp, not Included
LED - 3W or 8W, 3000K CCT standard

Wattage:

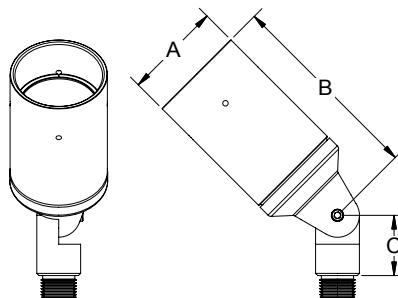
50W max

Voltage:

12 Volts - transformer required, not included

Mounting:

1/2" NPS thread



12V	A	B	C
HL-368	2 1/4"	4 9/16"	1 3/8"



HL-369

MR16 adjustable accent light with INTEGRAL ANGLED GLARE SHIELD for reduced visual glare. Suitable for wet location installations.

Material:

HL-369 - Machined Aluminum, Standard
HL-369-2 - Machined Brass

Finish:

AA - Anodized Satin Aluminum
AP - Aluminum Powder Coat
BK - Black Powder Coat
BZ - Bronze Powder Coat
WT - White Powder Coat
N - Natural, for stainless steel & brass

Lamping:

Halogen - MR16 Bi-Pin lamp, not Included
LED - 3W or 8W, 3000K CCT standard

Wattage:

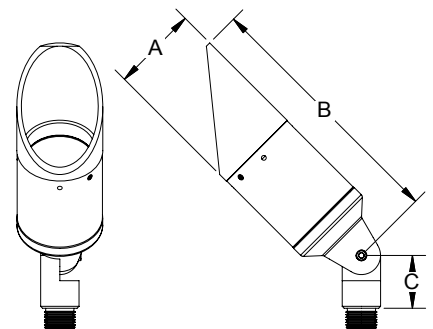
50W max

Voltage:

12 Volts - transformer required, not included

Mounting:

1/2" NPS thread



12V	A	B	C
HL-369	2 1/4"	6 11/16"	1 3/8"

ACCENT LIGHTS 120v/HID

HL-370

PAR20 adjustable accent light.
Suitable for wet location installations.

Material:

HL-370 - Machined Aluminum, Standard
HL-370-2 - Machined Brass

Finish:

AA - Anodized Satin Aluminum
AP - Aluminum Powder Coat
BK - Black Powder Coat
BZ - Bronze Powder Coat
WT - White Powder Coat
N - Natural, for stainless steel & brass

Lamping:

Incandescent/Halogen - PAR20 medium base lamp, not included

Wattage:

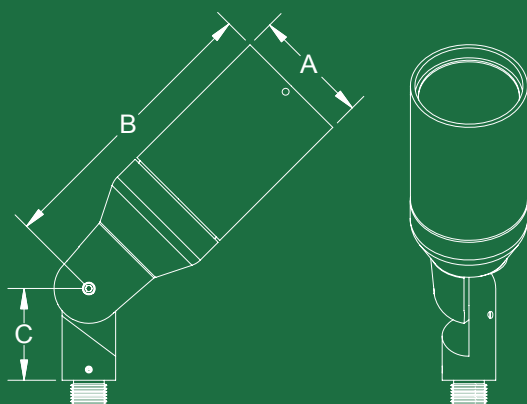
50W max

Voltage:

120 Volts

Mounting:

1/2" NPS thread



120V	A	B	C
HL-370	2 3/4"	6 5/8"	2 1/8"

Accent Lights 120v/HID



HL-372

PAR20 surface mount accent light. Suitable for wet location installations as an up or down light.

Material:
HL-372 - Machined Aluminum, Standard
HL-372-2 - Machined Brass

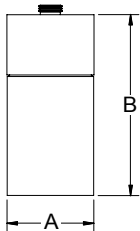
Finish:
AA - Anodized Satin Aluminum
AP - Aluminum Powder Coat
BK - Black Powder Coat
BZ - Bronze Powder Coat
WT - White Powder Coat
N - Natural, for stainless steel & brass

Lamping:
Incandescent/Halogen - PAR20 medium base lamp, not Included

Wattage:
50W max

Voltage:
120 Volts

Mounting:
1/2 NPS thread



120V	A	B	C
HL-372	2 3/4"	5 5/8"	



HL-380

Machined adjustable MR16 accent light with internal transformer. Suitable for wet location installations.

Material:
HL-380 - Machined Aluminum, Standard

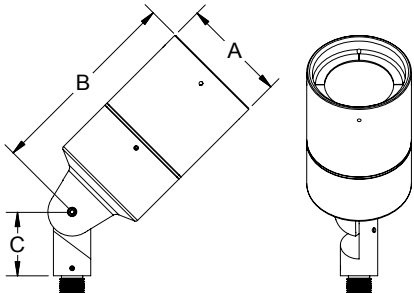
Finish:
AA - Anodized Satin Aluminum
AP - Aluminum Powder Coat
BK - Black Powder Coat
BZ - Bronze Powder Coat
WT - White Powder Coat

Lamping:
Halogen - MR16 Bi-Pin lamp, not Included
LED - 3W or 8W, 3000K CCT standard

Wattage:
50W max

Voltage:
120 Volts

Mounting:
1/2 NPS thread



120V	A	B	C
HL-380	3 1/2"	6 9/16"	2 1/8"



HL-386

Specification grade MR16 halogen 120V adjustable accent light, with GU10 socket. Suitable for wet location installations.

Material:
HL-386 - Machined Aluminum, Standard

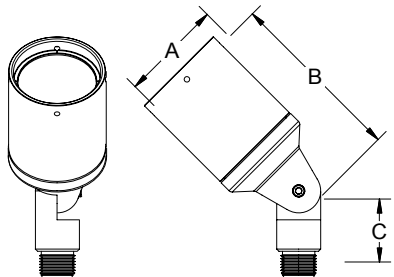
Finish:
AA - Anodized Satin Aluminum
AP - Aluminum Powder Coat
BK - Black Powder Coat
BZ - Bronze Powder Coat
WT - White Powder Coat

Lamping:
Halogen - MR16 GU10 lamp, not included

Wattage:
50W max

Voltage:
120 Volts

Mounting:
1/2 NPS thread



120V	A	B	C
HL-386	2 1/4"	3 7/8"	1 3/8"

Accent Lights 120v/HID



HL-370

PAR20 adjustable accent light.
Suitable for wet location installations.

Material:

HL-370 - Machined Aluminum, Standard
HL-370-2 - Machined Brass

Finish:

AA - Anodized Satin Aluminum
AP - Aluminum Powder Coat
BK - Black Powder Coat
BZ - Bronze Powder Coat
WT - White Powder Coat
N - Natural, for stainless steel & brass

Lamping:

Incandescent/Halogen - PAR20 medium base lamp, not Included

Wattage:

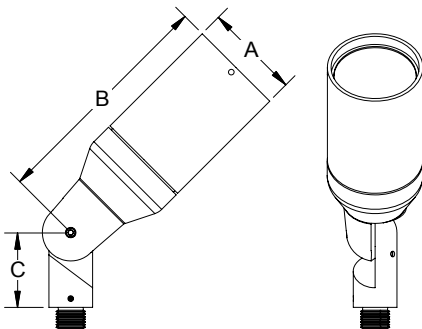
50W max

Voltage:

120 Volts

Mounting:

1/2" NPS thread



120V	A	B	C
HL-370	2 3/4"	6 5/8"	2 1/8"



HL-387

Adjustable PAR30 accent fixture.
Suitable for wet location installations.

Material:

HL-387 - Machined Aluminum, Standard

Finish:

AA - Anodized Satin Aluminum
AP - Aluminum Powder Coat
BK - Black Powder Coat
BZ - Bronze Powder Coat
WT - White Powder Coat

Lamping:

Incandescent/Halogen - PAR30 medium base lamp, not Included

Wattage:

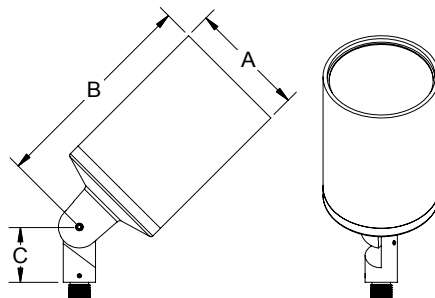
75W max

Voltage:

120 Volts

Mounting:

1/2" NPS thread



120V	A	B	C
HL-387	4 1/2"	8 3/16"	2 1/8"



HL-388

Adjustable PAR38 accent fixture.
Suitable for wet location installations.

Material:

HL-388 - Machined Aluminum, Standard

Finish:

AA - Anodized Satin Aluminum
AP - Aluminum Powder Coat
BK - Black Powder Coat
BZ - Bronze Powder Coat
WT - White Powder Coat

Lamping:

Incandescent/Halogen - PAR38 medium base lamp, not Included

Wattage:

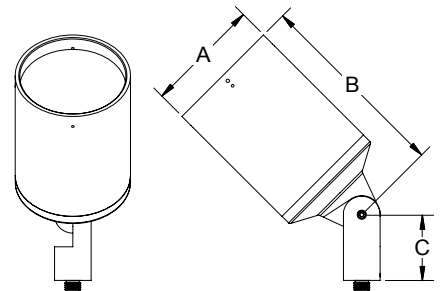
250W max

Voltage:

120 Volts

Mounting:

1/2" NPS thread



120V	A	B	C
HL-388	5 1/2"	9 3/8"	3 1/8"

Accent Lights 120v/HID



HL-414

Compact adjustable MR16 GX10 metal halide accent fixture. Remote electronic ballast included. Suitable for wet location installations.

Material:
HL-414 - Machined Aluminum, Standard

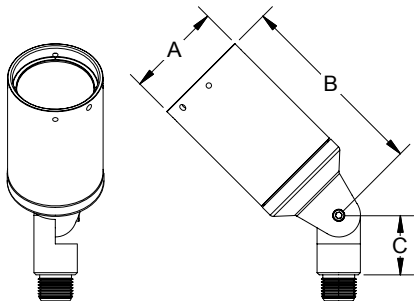
Finish:
AA - Anodized Satin Aluminum
AP - Aluminum Powder Coat
BK - Black Powder Coat
BZ - Bronze Powder Coat
WT - White Powder Coat

Lamping:
HID Metal Halide - MR16 GX10 lamp, not Included

Wattage:
20W or 39W

Ballast:
Metal halide ballast required, multi-volt electronic metal halide ballast included

Mounting:
1/2" NPS thread



HID	A	B	C
HL-414	2 1/4"	4 1/2"	1 3/8"



HL-416

Compact adjustable T4 metal halide accent fixture with field adjustable optics. Remote electronic ballast included. Suitable for wet location installations.

Material:
HL-416 - Machined Aluminum, Standard

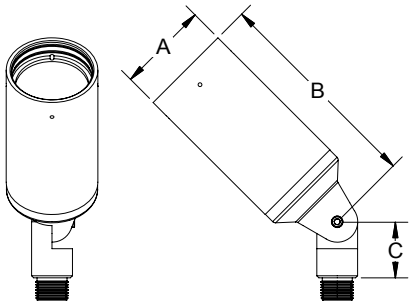
Finish:
AA - Anodized Satin Aluminum
AP - Aluminum Powder Coat
BK - Black Powder Coat
BZ - Bronze Powder Coat
WT - White Powder Coat

Lamping:
HID Metal Halide - T4 G8.5 lamp, not Included

Wattage:
20W or 39W

Ballast:
Metal halide ballast required, multi-volt electronic metal halide ballast included

Mounting:
1/2" NPS thread



HID	A	B	C
HL-416	2 1/4"	5 1/4"	1 3/8"



HL-420

Compact adjustable PAR20 metal halide accent fixture. Remote electronic ballast included. Suitable for wet location installations.

Material:
HL-420 - Machined Aluminum, Standard

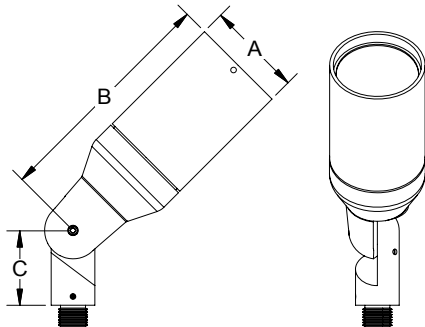
Finish:
AA - Anodized Satin Aluminum
AP - Aluminum Powder Coat
BK - Black Powder Coat
BZ - Bronze Powder Coat
WT - White Powder Coat

Lamping:
HID Metal Halide - PAR20 medium base lamp, not Included

Wattage:
20W or 39W

Ballast:
Metal halide ballast required, multi-volt electronic metal halide ballast included

Mounting:
1/2" NPS thread



HID	A	B	C
HL-420	2 3/4"	7"	2 1/8"

Accent Lights 120v/HID



HL-426

Compact adjustable T6 G12 metal halide accent fixture with field adjustable optics. Remote electronic ballast included. Suitable for wet location installation.

Material:

HL-426 - Machined Aluminum, Standard

Finish:

AA - Anodized Satin Aluminum
AP - Aluminum Powder Coat
BK - Black Powder Coat
BZ - Bronze Powder Coat
WT - White Powder Coat

Lamping:

HID Metal Halide - T6 G12 lamp, not Included

Wattage:

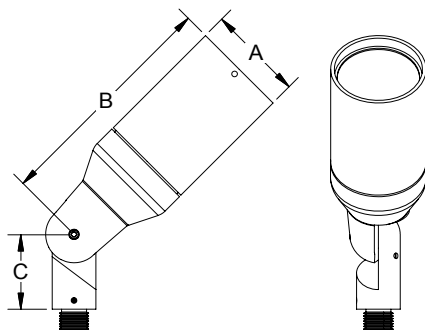
20W, 39W or 70W

Ballast:

Metal halide ballast required, multi-volt electronic metal halide ballast included

Mounting:

1/2" NPS thread



HID	A	B	C
HL-426	2 3/4"	7"	2 1/8"



HL-430

Adjustable PAR30 metal halide accent fixture. Remote electronic ballast included. Suitable for wet location installations.

Material:

HL-430 - Machined Aluminum, Standard

Finish:

AA - Anodized Satin Aluminum
AP - Aluminum Powder Coat
BK - Black Powder Coat
BZ - Bronze Powder Coat
WT - White Powder Coat

Lamping:

HID Metal Halide - PAR38 medium base lamp, not Included

Wattage:

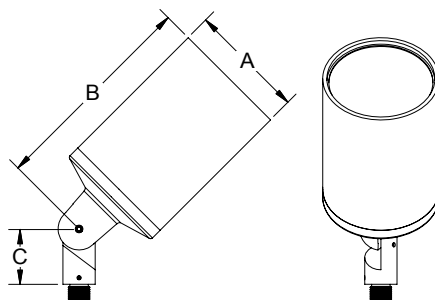
39W or 70W

Ballast:

Metal halide ballast required, multi-volt electronic metal halide ballast included

Mounting:

1/2" NPS thread



HID	A	B	C
HL-430	4 1/2"	8 3/16"	2 1/8"



HL-438

Adjustable PAR38 metal halide accent fixture. Remote electronic ballast included. Suitable for wet location installations.

Material:

HL-438 - Machined Aluminum, Standard

Finish:

AA - Anodized Satin Aluminum
AP - Aluminum Powder Coat
BK - Black Powder Coat
BZ - Bronze Powder Coat
WT - White Powder Coat

Lamping:

HID Metal Halide - PAR38 medium base lamp, not Included

Wattage:

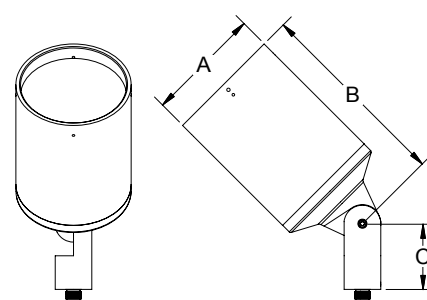
70W or 100W

Ballast:

Metal halide ballast required, multi-volt electronic metal halide ballast included

Mounting:

1/2" NPS thread



HID	A	B	C
HL-438	5 1/2"	9 3/8"	3 1/8"

Metal Halide Order Guide

20-39W - HL-400, HL-414, HL-416, HL-420, HL-474 and HL-474-2x

20-70W - HL-410, HL-426 and HL-430

39-70W - HL-430, HL-476 and HL-476-2x

70-100W - HL-438

ORDER SPECIFICATION

_____-_____-_____-_____-_____
Fixture Finish Lamping Voltage Options/Access.

SAMPLE ORDER SPECIFICATION

HL-416 - BZ - 20 - 120-277 - WMEB-20 - GL-11

(HL-416-BZ-20-120-277-WMEB-20-GL-11 Aluminum, bronze powder coat finish, 20W ballast, WMEB-20 wall mount ballast enclosure and an angled glare shield)

MATERIAL:

Standard overall material is 6061 aluminum.

HL-4xx - Machined aluminum

FINISH:

AA - Anodized Satin Aluminum

AP - Aluminum Powder Coat

BK - Black Powder Coat

BZ - Bronze Powder Coat

WT - White Powder Coat

LAMPING:

Lamp Type - HID metal halide lamp, not included.

20 - 20W lamp/ballast

35 - 39W lamp/ballast

70 - 70W lamp/ballast

100 - 100W lamp/ballast

VOLTAGE:

Ballast - Remote ballast standard (HL-RB, 3R rated stainless steel enclosure 7.3"x4.2"x2.1") with HID electronic metal halide ballast, included. See Options.

120-277 - 120-277 VAC multi-volt ballast

OPTIONS:

Ballast options available in place of HL-RB for direct burial, surface and wall mounting.

H-POD-20 - 20W Direct burial ballast pod

H-POD-35 - 39W Direct burial ballast pod

H-POD-70 - 70W Direct burial ballast pod

SMEB-20 - 20W Surface mount ballast canopy

SMEB-35 - 39W Surface mount ballast canopy

SMEB-70 - 70W Surface mount ballast canopy

SMEB-100 - 100W Surface mount ballast canopy

WMEB-20 - 20W Wall mount ballast canopy

WMEB-35 - 39W Wall mount ballast canopy

WMEB-70 - 70W Wall mount ballast canopy

WMEB-100 - 100W Wall mount ballast canopy

ACCESSORIES:

Glare shields

HL-400

GL-91 - Angled, aluminum

HL-410

GL-40 - Angled, aluminum

BD - Barn doors, aluminum

HL-414/HL-416

GL-10 - Short angled, aluminum

GL-11 - Angled, aluminum

GL-13 - Straight, aluminum

HL-420/HL-426

GL-21 - Angled, aluminum

GL-23 - Straight, aluminum

HL-430

GL-30 - Angled, aluminum

GL-31 - Straight, aluminum

HL-438

GL-38 - Angled, aluminum

GL-39 - Straight, aluminum

Lenses/Louvers/Color Filter

HL-410

LA-3 - Linear Spread Lens

HL-414/HL-416

LA-1 - Hexcell Louver (Black)

LA-2 - Prismatic lens

LA-3 - Linear spread lens

LA-4 - Soft focus lens (diffused)

LA-5 - Moonlight lens

LA-6 - Blue lens

HL-420/HL-426

LA-1-20 - Hexcell Louver (Black)

LA-2-20 - Prismatic lens

LA-3-20 - Linear spread lens

LA-4-20 - Soft focus lens (diffused)

LA-5-20 - Moonlight lens

LA-6-20 - Blue lens

FLOOD LIGHTS

HL-390

Compact adjustable T4 120V halogen flood light. Suitable for wet location installations.

Material:
HL-390 - Machined Aluminum, Standard

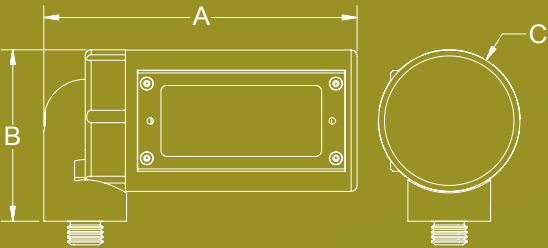
Finish:
AA - Anodized Satin Aluminum
AP - Aluminum Powder Coat
BK - Black Powder Coat
BZ - Bronze Powder Coat
WT - White Powder Coat

Lamping:
Halogen - T4 E11 Mini Can lamp, not Included

Wattage:
100W max

Voltage:
120 Volts

Mounting:
1/2" NPS thread



120V	A	B	C
HL-390	6 5/8"	3 5/8"	3"



HL-391

Ultra Compact T4 flood light. Suitable for wet location installations.

Material:

HL-391 - Machined Aluminum, Standard

Finish:

AA - Anodized Satin Aluminum
AP - Aluminum Powder Coat
BK - Black Powder Coat
BZ - Bronze Powder Coat
WT - White Powder Coat

Lamping:

Halogen - G6.35 Bi-Pin lamp, not Included
LED - 3W or 8W, 3000K CCT standard

Wattage:

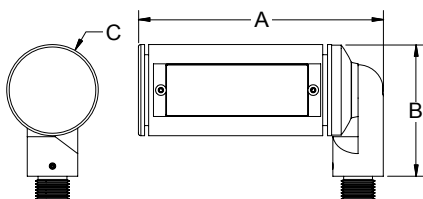
50W max

Voltage:

12 Volts - transformer required, not included

Mounting:

1/2" NPS thread



12V	A	B	C
HL-391	6"	3 1/4"	2 1/4"



HL-400

Ultra compact adjustable T4 metal halide flood light. Remote electronic ballast included. Suitable for wet location installations.

Material:

HL-400 - Machined Aluminum, Standard

Finish:

AA - Anodized Satin Aluminum
AP - Aluminum Powder Coat
BK - Black Powder Coat
BZ - Bronze Powder Coat
WT - White Powder Coat

Lamping:

HID Metal Halide - T4 G8.5 lamp, not Included

Wattage:

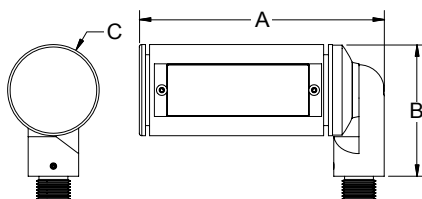
20W or 39W

Ballast:

Metal halide ballast required, multi-volt
electronic metal halide ballast included

Mounting:

1/2" NPS thread



HID	A	B	C
HL-400	6"	3 1/4"	2 1/4"



HL-410

Compact adjustable T6 metal halide flood light. Remote electronic ballast included. Suitable for wet location installations.

Material:

HL-410 - Machined Aluminum, Standard

Finish:

AA - Anodized Satin Aluminum
AP - Aluminum Powder Coat
BK - Black Powder Coat
BZ - Bronze Powder Coat
WT - White Powder Coat

Lamping:

HID Metal Halide - T6 G12 lamp, not Included

Wattage:

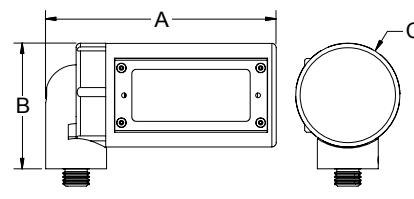
20W, 39W or 70W

Ballast:

Metal halide ballast required, multi-volt
electronic metal halide ballast included

Mounting:

1/2" NPS thread



HID	A	B	C
HL-410	6 5/8"	3 5/8"	3"

WALL & SURFACE MOUNT

HL-374

PAR20 wall mount accent light. Suitable for wet location installations as an up or down light.

Material:
HL-374 - Machined Aluminum, Standard

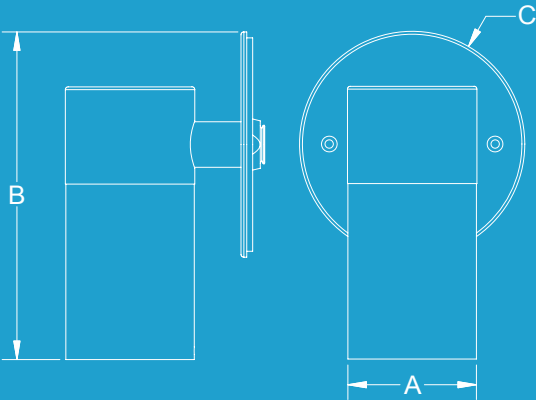
Finish:
AA - Anodized Satin Aluminum
AP - Aluminum Powder Coat
BK - Black Powder Coat
BZ - Bronze Powder Coat
WT - White Powder Coat

Lamping:
Incandescent/Halogen - PAR20 medium base lamp, not Included

Wattage:
50W max

Voltage:
120 Volts

Mounting:
4.75" Wall plate



120V	A	B	C
HL-374	2 3/4"	6 15/16"	4 3/4"

Wall & Surface Mount



HL-320

Compact MR8 surface mount accent light with 3.50" diameter mounting plate. Suitable for wet location installations as an up or down light.

Material:

HL-320 - Machined Aluminum, Standard

Finish:

AA - Anodized Satin Aluminum
AP - Aluminum Powder Coat
BK - Black Powder Coat
BZ - Bronze Powder Coat
WT - White Powder Coat

Lamping:

Halogen - MR8 Bi-Pin lamp, not Included
LED - 1W, 3000K CCT standard

Wattage:

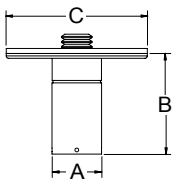
35W max

Voltage:

12 Volts - transformer required, not included
LED - Remote 350mA driver required

Mounting:

3.50" Mounting plate



12V	A	B	C
HL-320	1 1/4"	2 1/2"	3 1/2"



HL-330

MR16 fixed accent light with a machined 4.75" wall plate. Suitable for wet location installations as an up or down light.

Material:

HL-330 - Machined Aluminum, Standard

Finish:

AA - Anodized Satin Aluminum
AP - Aluminum Powder Coat
BK - Black Powder Coat
BZ - Bronze Powder Coat
WT - White Powder Coat

Lamping:

Halogen - MR16 Bi-Pin lamp, not Included
LED - 3W or 8W, 3000K CCT standard

Wattage:

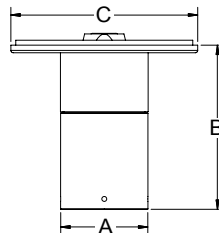
50W max

Voltage:

12 Volts - transformer required, not included

Mounting:

4.75" Mounting plate



12V	A	B	C
HL-330	2 1/4"	4 3/16"	4 3/4"



HL-340

MR16 wall mount accent light. Suitable for wet location installations as an up or down light.

Material:

HL-340 - Machined Aluminum, Standard

Finish:

AA - Anodized Satin Aluminum
AP - Aluminum Powder Coat
BK - Black Powder Coat
BZ - Bronze Powder Coat
WT - White Powder Coat

Lamping:

Halogen - MR16 Bi-Pin lamp, not Included
LED - 3W or 8W, 3000K CCT standard

Wattage:

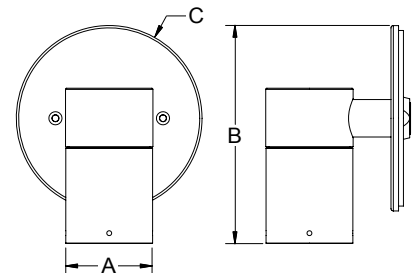
50W max

Voltage:

12 Volts - transformer required, not included

Mounting:

4.75" Wall plate



12V	A	B	C
HL-340	2 1/4"	5 9/16"	4 3/4"

Wall & Surface Mount



HL-340-2x

MR16 wall mount up/down accent light. Suitable for wet location installations.

Material:

HL-340-2x - Machined Aluminum, Standard

Finish:

AA - Anodized Satin Aluminum
AP - Aluminum Powder Coat
BK - Black Powder Coat
BZ - Bronze Powder Coat
WT - White Powder Coat

Lamping:

Halogen - MR16 Bi-Pin lamp, not Included
LED - 3W or 8W, 3000K CCT standard

Wattage:

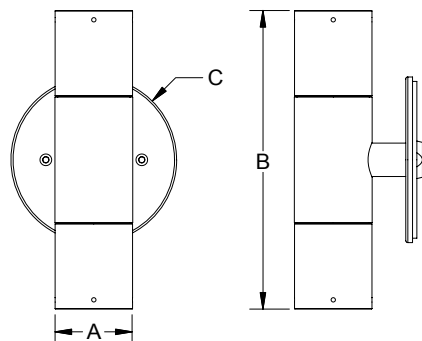
50W max each

Voltage:

12 Volts - transformer required, not included

Mounting:

4.75" Wall plate



12V	A	B	C
HL-340-2x	2 1/4"	8 9/16"	4 3/4"



HL-373

PAR20 surface mount accent light with a 4.75" mounting plate. Suitable for wet location installations as an up or down light.

Material:

HL-373 - Machined Aluminum, Standard

Finish:

AA - Anodized Satin Aluminum
AP - Aluminum Powder Coat
BK - Black Powder Coat
BZ - Bronze Powder Coat
WT - White Powder Coat

Lamping:

Incandescent/Halogen - PAR20 medium base lamp, not Included

Wattage:

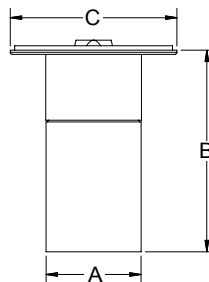
50W max

Voltage:

120 Volts

Mounting:

4.75" Mounting plate



120V	A	B	C
HL-373	2 3/4"	5 3/4"	4 3/4"



HL-374

PAR20 wall mount accent light. Suitable for wet location installations as an up or down light.

Material:

HL-374 - Machined Aluminum, Standard

Finish:

AA - Anodized Satin Aluminum
AP - Aluminum Powder Coat
BK - Black Powder Coat
BZ - Bronze Powder Coat
WT - White Powder Coat

Lamping:

Incandescent/Halogen - PAR20 medium base lamp, not Included

Wattage:

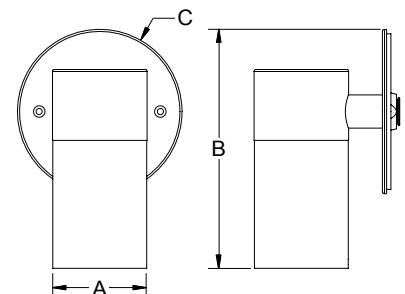
50W max

Voltage:

120 Volts

Mounting:

4.75" Wall plate



120V	A	B	C
HL-374	2 3/4"	6 15/16"	4 3/4"

Wall & Surface Mount



HL-374-2x

PAR20 wall mount up/down fixture.
Suitable for wet location installations.

Material:

HL-374-2x - Machined Aluminum, Standard

Finish:

AA - Anodized Satin Aluminum
AP - Aluminum Powder Coat
BK - Black Powder Coat
BZ - Bronze Powder Coat
WT - White Powder Coat

Lamping:

Incandescent/Halogen - PAR20 medium base lamp, not Included

Wattage:

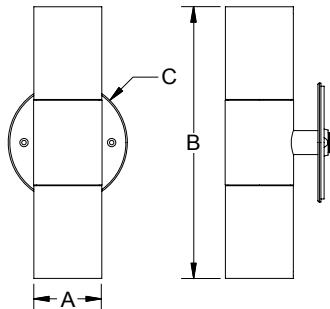
50W max each

Voltage:

120 Volts

Mounting:

4.75" Wall plate



120V	A	B	C
HL-374-2x	2 3/4"	10 13/16"	4 3/4"



HL-376

PAR30 wall mount accent light. Suitable for wet location installations as an up or down light.

Material:

HL-376 - Machined Aluminum, Standard

Finish:

AA - Anodized Satin Aluminum
AP - Aluminum Powder Coat
BK - Black Powder Coat
BZ - Bronze Powder Coat
WT - White Powder Coat

Lamping:

Incandescent/Halogen - PAR30 medium base lamp, not Included

Wattage:

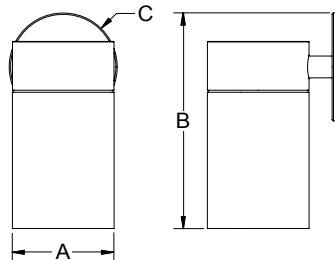
75W max

Voltage:

120 Volts

Mounting:

4.75" Wall plate



120V	A	B	C
HL-376	4 1/2"	9 1/2"	4 3/4"



HL-376-2x

PAR30 wall mount up/down fixture.
Suitable for wet location installations.

Material:

HL-376-2x - Machined Aluminum, Standard

Finish:

AA - Anodized Satin Aluminum
AP - Aluminum Powder Coat
BK - Black Powder Coat
BZ - Bronze Powder Coat
WT - White Powder Coat

Lamping:

Incandescent/Halogen - PAR30 medium base lamp, not Included

Wattage:

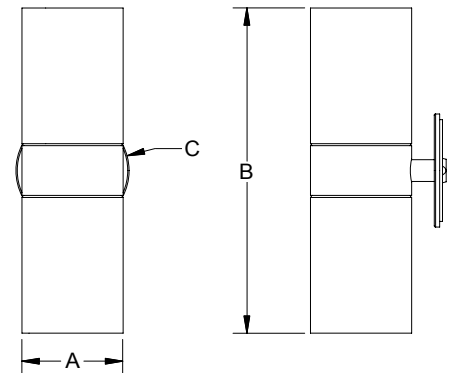
75W max each

Voltage:

120 Volts

Mounting:

5.00" Wall plate



120V	A	B	C
HL-376-2x	4 1/2"	14 3/8"	5"

Wall & Surface Mount



HL-384

Wall mount MR16 adjustable accent light with wall plate, canopy, and integral 120/12V electronic transformer.
Suitable for wet location installations.

Material:

HL-384 - Machined Aluminum, Standard

Finish:

AA - Anodized Satin Aluminum
AP - Aluminum Powder Coat
BK - Black Powder Coat
BZ - Bronze Powder Coat
WT - White Powder Coat

Lamping:

Halogen - MR16 Bi-Pin lamp, not included
LED - 3W or 8W, 3000K CCT standard

Wattage:

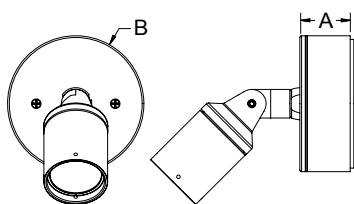
50W max

Voltage:

120 Volts

Mounting:

4.75" Wall plate



120V	A	B	C
HL-384	1 3/4"	4 3/4"	



HL-384-2x

Dual wall mount MR16 adjustable accent light with wall plate, canopy, and integral 120/12V electronic transformer. Suitable for wet location installations.

Material:

HL-384-2x - Machined Aluminum, Standard

Finish:

AA - Anodized Satin Aluminum
AP - Aluminum Powder Coat
BK - Black Powder Coat
BZ - Bronze Powder Coat
WT - White Powder Coat

Lamping:

Halogen - MR16 Bi-Pin lamp, not included
LED - 3W or 8W, 3000K CCT standard

Wattage:

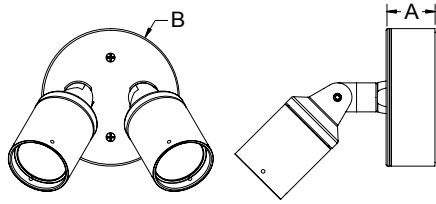
50W max each

Voltage:

120 Volts

Mounting:

4.75" Wall plate



120V	A	B	C
HL-384-2x	1 3/4"	4 3/4"	



HL-474

PAR20 metal halide wall mount accent light. Remote electronic ballast included. Suitable for wet location installations.

Material:

HL-474 - Machined Aluminum, Standard

Finish:

AA - Anodized Satin Aluminum
AP - Aluminum Powder Coat
BK - Black Powder Coat
BZ - Bronze Powder Coat
WT - White Powder Coat

Lamping:

HID Metal Halide - PAR20 medium base lamp, not included

Wattage:

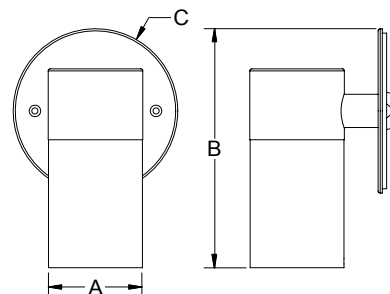
20W or 39W

Ballast:

Metal halide ballast required, multi-volt electronic metal halide ballast included

Mounting:

4.75" Wall plate



HID	A	B	C
HL-474	2 3/4"	7 5/16"	4 3/4"



HL-474-2x

PAR20 metal halide wall mount up/down accent light. Remote electronic ballast included. Suitable for wet location installations.

Material:

HL-474-2x - Machined Aluminum, Standard

Finish:

AA - Anodized Satin Aluminum
AP - Aluminum Powder Coat
BK - Black Powder Coat
BZ - Bronze Powder Coat
WT - White Powder Coat

Lamping:

HID Metal Halide - PAR20 medium base lamp, not Included

Wattage:

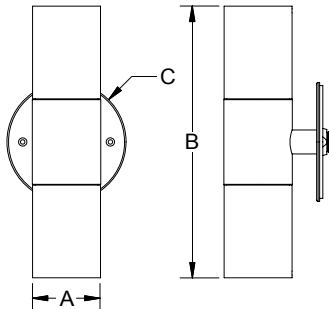
20W or 39W each

Ballast:

Metal halide ballast required, multi-volt electronic metal halide ballast included

Mounting:

4.75" Wall plate



HID	A	B	C
HL-474-2x	2 3/4"	11 9/16"	4 3/4"



HL-476

PAR30 metal halide wall mount accent light. Remote electronic ballast included. Suitable for wet location installations.

Material:

HL-476 - Machined Aluminum, Standard

Finish:

AA - Anodized Satin Aluminum
AP - Aluminum Powder Coat
BK - Black Powder Coat
BZ - Bronze Powder Coat
WT - White Powder Coat

Lamping:

HID Metal Halide - PAR30 medium base lamp, not Included

Wattage:

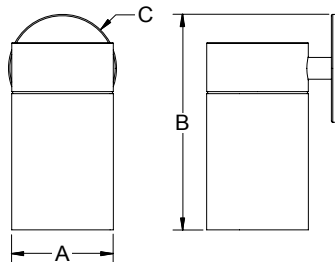
39W or 70W

Ballast:

Metal halide ballast required, multi-volt electronic metal halide ballast included

Mounting:

4.75" Wall plate



HID	A	B	C
HL-476	4 1/2"	9 1/2"	4 3/4"



HL-476-2x

PAR30 metal halide wall mount up/down accent light. Remote electronic ballast included. Suitable for wet location installations.

Material:

HL-476-2x - Machined Aluminum, Standard

Finish:

AA - Anodized Satin Aluminum
AP - Aluminum Powder Coat
BK - Black Powder Coat
BZ - Bronze Powder Coat
WT - White Powder Coat

Lamping:

HID Metal Halide - PAR30 medium base lamp, not Included

Wattage:

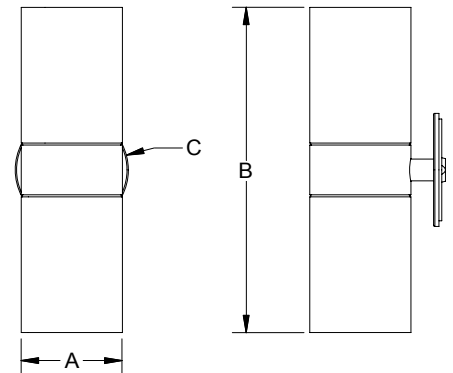
39W or 70W each

Ballast:

Metal halide ballast required, multi-volt electronic metal halide ballast included

Mounting:

5.00" Wall plate



HID	A	B	C
HL-476-2x	4 1/2"	14 3/8"	5"

PATH LIGHTS

HL-616

Path light with adjustable MR16 accent light, on a 90° stem extension. Suitable for wet location installations.

Material:
HL-616 - Machined Aluminum, Standard

Finish:
AA - Anodized Satin Aluminum
AP - Aluminum Powder Coat
BK - Black Powder Coat
BZ - Bronze Powder Coat
WT - White Powder Coat

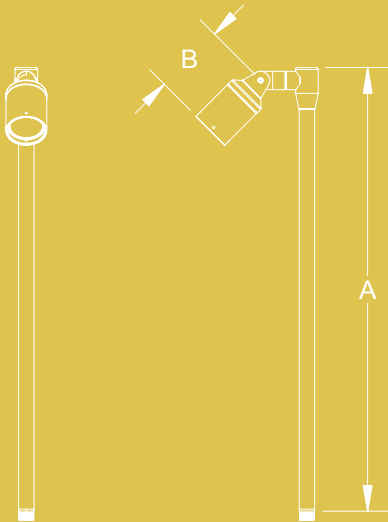
Lamping:
Halogen - MR16 Bi-Pin lamp, not included
LED - 3W or 8W, 3000K CCT standard

Wattage:
50W max

Voltage:
12 Volts - transformer required, not included

Mounting:
1/2" NPS thread

Similar Fixtures:
HL-610 - MR8 Fixture
HL-615 - MR11 Fixture



12V	A	B	
HL-616	24"	3 7/8"	





HL-617

Path light with adjustable dual MR16 accent light, on a "T" mount stem extension. Suitable for wet location installations.

Material:

HL-617 - Machined Aluminum, Standard

Finish:

AA - Anodized Satin Aluminum
AP - Aluminum Powder Coat
BK - Black Powder Coat
BZ - Bronze Powder Coat
WT - White Powder Coat

Lamping:

Halogen - MR16 Bi-Pin lamp, not included
LED - 3W or 8W, 3000K CCT standard

Wattage:

50W max each

Voltage:

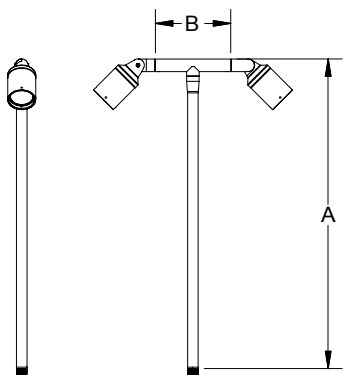
12 Volts - transformer required, not included

Mounting:

1/2" NPS thread

Similar Fixtures:

HL-612 - MR8 Fixture
HL-615 - MR11 Fixture



12V	A	B	
HL-617	24"	6"	



HL-620

Path light with adjustable MR8 accent light, on a bent stem extension. Suitable for wet location installations.

Material:

HL-620 - Machined Aluminum, Standard

Finish:

AA - Anodized Satin Aluminum
AP - Aluminum Powder Coat
BK - Black Powder Coat
BZ - Bronze Powder Coat
WT - White Powder Coat

Lamping:

Halogen - MR8 Bi-Pin lamp, not included
LED - 1W, 3000K CCT standard

Wattage:

35W max

Voltage:

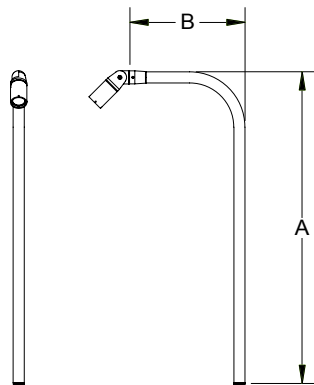
12 Volts - transformer required, not included
LED - Remote 350mA driver required

Mounting:

1/2" NPS thread

Similar Fixtures:

HL-624 - MR11 Fixture



12V	A	B	
HL-620	24"	8 11/16"	



HL-626

Path light with adjustable MR16 accent light, on a bent stem extension. Suitable for wet location installations.

Material:

HL-626 - Machined Aluminum, Standard

Finish:

AA - Anodized Satin Aluminum
AP - Aluminum Powder Coat
BK - Black Powder Coat
BZ - Bronze Powder Coat
WT - White Powder Coat

Lamping:

Halogen - MR16 Bi-Pin lamp, not included
LED - 3W or 8W, 3000K CCT standard

Wattage:

50W max,

Voltage:

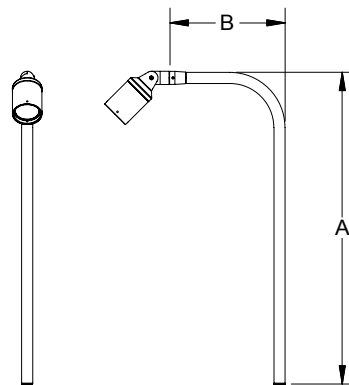
12 Volts - transformer required, not included

Mounting:

1/2" NPS thread

Similar Fixtures:

HL-620 - MR8 Fixture
HL-624 - MR11 Fixture



12V	A	B	
HL-626	24"	8 11/16"	

SIGN/POST LIGHTS

HL-736

Sign light with an adjustable MR16 accent light, on a traditional stem extension. Suitable for wet location installations.

Material:

HL-736 - Machined Aluminum, Standard

Finish:

AA - Anodized Satin Aluminum

AP - Aluminum Powder Coat

BK - Black Powder Coat

BZ - Bronze Powder Coat

WT - White Powder Coat

Lamping:

Halogen - MR16 Bi-Pin lamp, not included

LED - 3W or 8W, 3000K CCT standard

Wattage:

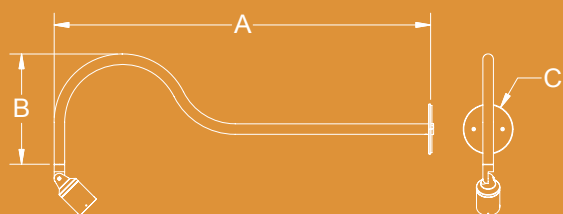
50W max

Voltage:

12 Volts - transformer required, not included

Mounting:

4.75" Wall plate



12V	A	B	C
HL-736	36"	10 1/2"	4 3/4"





HL-706

Post mount light with an adjustable MR16 accent light, on a straight stem extension. Suitable for wet location installations.

Material:
HL-706 - Machined Aluminum, Standard

Finish:
AA - Anodized Satin Aluminum
AP - Aluminum Powder Coat
BK - Black Powder Coat
BZ - Bronze Powder Coat
WT - White Powder Coat

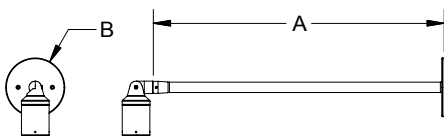
Lamping:
Halogen - MR16 Bi-Pin lamp, not included
LED - 3W or 8W, 3000K CCT standard

Wattage:
50W max

Voltage:
12 Volts - transformer required, not included

Mounting:
4.75" Wall plate

Similar Fixtures:
HL-700 - MR8 Fixture
HL-701 - MR11 Fixture
HL-750 - PAR20 Fixture



12V	A	B	
HL-706	24"	4 3/4"	



HL-707

Dual sign light with an adjustable MR16 accent light, on a "T" mount stem extension. Suitable for wet location installations.

Material:
HL-707 - Machined Aluminum, Standard

Finish:
AA - Anodized Satin Aluminum
AP - Aluminum Powder Coat
BK - Black Powder Coat
BZ - Bronze Powder Coat
WT - White Powder Coat

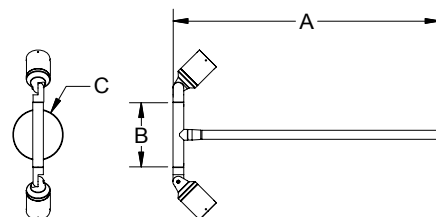
Lamping:
Halogen - MR16 Bi-Pin lamp, not included
LED - 3W or 8W, 3000K CCT standard

Wattage:
50W max each

Voltage:
12 Volts - transformer required, not included

Mounting:
4.75" Wall plate

Similar Fixtures:
HL-702 - MR8 Fixture
HL-704 - MR11 Fixture
HL-757 - PAR20 Fixture



12V	A	B	C
HL-707	24"	6"	4 3/4"



HL-716

Sign light with an adjustable MR16 accent light, on a 90° stem extension. Suitable for wet location installations.

Material:
HL-716 - Machined Aluminum, Standard

Finish:
AA - Anodized Satin Aluminum
AP - Aluminum Powder Coat
BK - Black Powder Coat
BZ - Bronze Powder Coat
WT - White Powder Coat

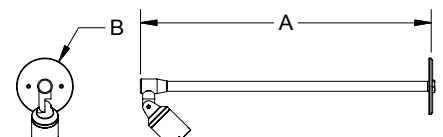
Lamping:
Halogen - MR16 Bi-Pin lamp, not included
LED - 3W or 8W, 3000K CCT standard

Wattage:
50W max

Voltage:
12 Volts - transformer required, not included

Mounting:
4.75" Wall plate

Similar Fixtures:
HL-710 - MR8 Fixture
HL-711 - MR11 Fixture
HL-751 - PAR20 Fixture



12V	A	B	
HL-716	24"	4 3/4"	

Sign/Post Lights



HL-726

Sign light with an adjustable MR16 accent light, on a bent stem extension.
Suitable for wet location installations.

Material:

HL-726 - Machined Aluminum, Standard

Finish:

AA - Anodized Satin Aluminum
AP - Aluminum Powder Coat
BK - Black Powder Coat
BZ - Bronze Powder Coat
WT - White Powder Coat

Lamping:

Halogen - MR16 Bi-Pin lamp, not included
LED - 3W or 8W, 3000K CCT standard

Wattage:

50W max

Voltage:

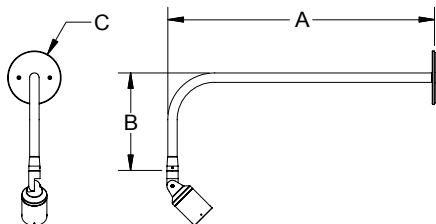
12 Volts - transformer required, not included

Mounting:

4.75" Wall plate

Similar Fixtures:

HL-720 - MR8 Fixture
HL-721 - MR11 Fixture
HL-752 - PAR20 Fixture



12V	A	B	C
HL-726	24"	8 11/16"	4 3/4"



HL-727

Dual sign light with an adjustable MR16 accent light, on a bent stem extension.
Suitable for wet location installations.

Material:

HL-727 - Machined Aluminum, Standard

Finish:

AA - Anodized Satin Aluminum
AP - Aluminum Powder Coat
BK - Black Powder Coat
BZ - Bronze Powder Coat
WT - White Powder Coat

Lamping:

Halogen - MR16 Bi-Pin lamp, not included
LED - 3W or 8W, 3000K CCT standard

Wattage:

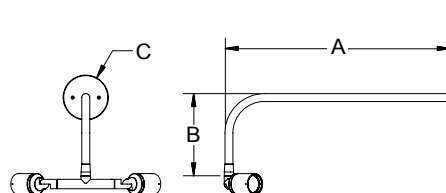
50W max each

Voltage:

12 Volts - transformer required, not included

Mounting:

4.75" Wall plate



12V	A	B	C
HL-727	24"	8 11/16"	4 3/4"



HL-736

Sign light with an adjustable MR16 accent light, on a traditional stem extension.
Suitable for wet location installations.

Material:

HL-736 - Machined Aluminum, Standard

Finish:

AA - Anodized Satin Aluminum
AP - Aluminum Powder Coat
BK - Black Powder Coat
BZ - Bronze Powder Coat
WT - White Powder Coat

Lamping:

Halogen - MR16 Bi-Pin lamp, not included
LED - 3W or 8W, 3000K CCT standard

Wattage:

50W max

Voltage:

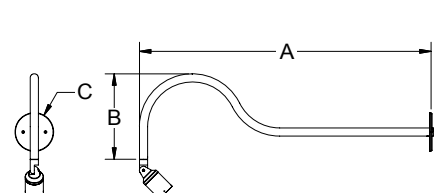
12 Volts - transformer required, not included

Mounting:

4.75" Wall plate

Similar Fixtures:

HL-730 - MR8 Fixture
HL-731 - MR11 Fixture
HL-753 - PAR20 Fixture



12V	A	B	C
HL-736	36"	10 1/2"	4 3/4"



HL-737

Dual sign light with an adjustable MR16 accent light, on a traditional stem extension. Suitable for wet location installations.

Material:

HL-737 - Machined Aluminum, Standard

Finish:

AA - Anodized Satin Aluminum
AP - Aluminum Powder Coat
BK - Black Powder Coat
BZ - Bronze Powder Coat
WT - White Powder Coat

Lamping:

Halogen - MR16 Bi-Pin lamp, not included
LED - 3W or 8W, 3000K CCT standard

Wattage:

50W max each

Voltage:

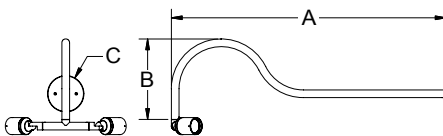
12 Volts - transformer required, not included

Mounting:

4.75" Wall plate

Similar Fixtures:

HL-732 - MR8 Fixture
HL-734 - MR11 Fixture



12V	A	B	C
HL-737	36"	10 1/2"	4 3/4"



HL-746

Sign light with an adjustable MR16 accent light, on a hook arm stem extension. Suitable for wet location installations.

Material:

HL-746 - Machined Aluminum, Standard

Finish:

AA - Anodized Satin Aluminum
AP - Aluminum Powder Coat
BK - Black Powder Coat
BZ - Bronze Powder Coat
WT - White Powder Coat

Lamping:

Halogen - MR16 Bi-Pin lamp, not included
LED - 3W or 8W, 3000K CCT standard

Wattage:

50W max

Voltage:

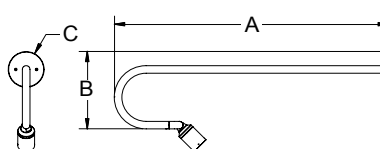
12 Volts - transformer required, not included

Mounting:

4.75" Wall plate

Similar Fixtures:

HL-740 - MR8 Fixture
HL-741 - MR11 Fixture
HL-754 - PAR20 Fixture



12V	A	B	C
HL-746	36"	10 5/16"	4 3/4"



HL-747

Dual sign light with an adjustable MR16 accent light, on a hook arm stem extension. Suitable for wet location installations.

Material:

HL-747 - Machined Aluminum, Standard

Finish:

AA - Anodized Satin Aluminum
AP - Aluminum Powder Coat
BK - Black Powder Coat
BZ - Bronze Powder Coat
WT - White Powder Coat

Lamping:

Halogen - MR16 Bi-Pin lamp, not included
LED - 3W or 8W, 3000K CCT standard

Wattage:

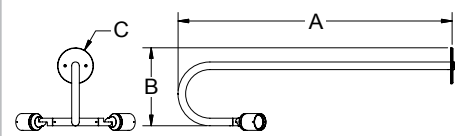
50W max each

Voltage:

12 Volts - transformer required, not included

Mounting:

4.75" Wall plate



12V	A	B	C
HL-747	36"	10 5/16"	4 3/4"

IN-GRADE UP LIGHTS

HL-820

Adjustable recessed low voltage MR16 up light fixture designed for mounting into wood decks and other delicate materials. Suitable for wet location installations.

Material:
HL-820 - Machined Aluminum, Standard

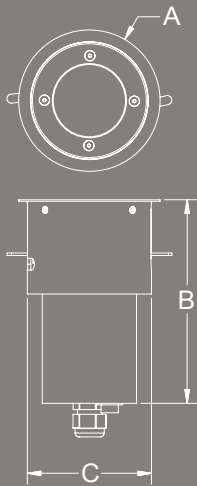
Finish:
AA - Anodized Satin Aluminum
AP - Aluminum Powder Coat
BK - Black Powder Coat
BZ - Bronze Powder Coat
WT - White Powder Coat

Lamping:
Halogen - MR16 Bi-Pin lamp, not included
LED - 3W, 3000K CCT standard

Wattage:
35W max

Voltage:
12 Volts - transformer required, not included

Mounting:
Suitable for installations into wood and other delicate materials w/adjustable mounting tabs



12V	A	B	C
HL-820	4 1/2"	6 1/2"	3 15/16"



In-Grade Up Lights



HL-810

Niche recessed low voltage up light fixture with an adjustable light source. Suitable for wet location installations.

Material:

HL-810 - Machined Aluminum, Standard

Finish:

AA - Anodized Satin Aluminum
AP - Aluminum Powder Coat
BK - Black Powder Coat
BZ - Bronze Powder Coat
WT - White Powder Coat

Lamping:

Halogen - MR8/11 Bi-Pin lamp, not included
LED - 3W, 3000K CCT standard

Wattage:

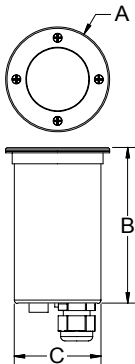
35W max

Voltage:

12 Volts - transformer required, not included

Mounting:

Suitable for floor installations into concrete, masonry or any noncombustible material.
Optional Pour Housing HL-10PH



12V	A	B	C
HL-810	3"	4 7/16"	2 1/2"



HL-812

Solid brass niche recessed low voltage solid brass up light fixture with an adjustable light source. Suitable for wet location installations.

Material:

HL-812 - Machined Brass

Finish:

N - Natural, for stainless steel & brass

Lamping:

Halogen - MR8/11 Bi-Pin lamp, not included
LED - 3W, 3000K CCT standard

Wattage:

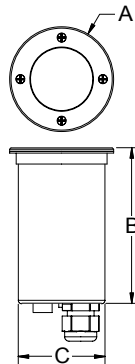
35W max

Voltage:

12 Volts - transformer required, not included

Mounting:

Suitable for floor installations into concrete, masonry or any noncombustible material.
Optional Pour Housing HL-12PH



12V	A	B	C
HL-812	3"	4 7/16"	2 1/2"



HL-820

Adjustable recessed low voltage MR16 up light fixture designed for mounting into wood decks and other delicate materials. Suitable for wet location installations.

Material:

HL-820 - Machined Aluminum, Standard

Finish:

AA - Anodized Satin Aluminum
AP - Aluminum Powder Coat
BK - Black Powder Coat
BZ - Bronze Powder Coat
WT - White Powder Coat

Lamping:

Halogen - MR16 Bi-Pin lamp, not included
LED - 3W, 3000K CCT standard

Wattage:

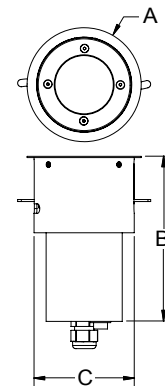
35W max

Voltage:

12 Volts - transformer required, not included

Mounting:

Suitable for installations into wood and other delicate materials w/adjustable mounting tabs



12V	A	B	C
HL-820	4 1/2"	6 1/2"	3 15/16"

In-Grade Up Lights



HL-822

Compact MR16 recessed low voltage in-grade fixture with an adjustable light source. Suitable for wet location installations.

Material:

HL-822 - Machined Aluminum, Standard

Finish:

AA - Anodized Satin Aluminum
AP - Aluminum Powder Coat
BK - Black Powder Coat
BZ - Bronze Powder Coat
WT - White Powder Coat

Lamping:

Halogen - MR16 Bi-Pin lamp, not included
LED - 3W, 3000K CCT standard

Wattage:

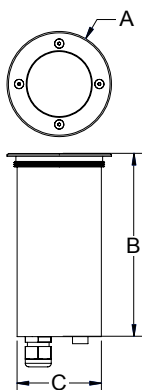
50W max

Voltage:

12 Volts - transformer required, not included

Mounting:

Suitable for floor installations into concrete, masonry or any noncombustible material.
Optional Pour Housing HL-20PH



12V	A	B	C
HL-822	3 3/4"	6 1/2"	3"



HL-824

Compact MR16 recessed low voltage in-grade fixture with a protective lens grill and an adjustable light source. Suitable for wet location installations.

Material:

HL-824 - Machined Aluminum, Standard

Finish:

AA - Anodized Satin Aluminum
AP - Aluminum Powder Coat
BK - Black Powder Coat
BZ - Bronze Powder Coat
WT - White Powder Coat

Lamping:

Halogen - MR16 Bi-Pin lamp, not included
LED - 3W, 3000K CCT standard

Wattage:

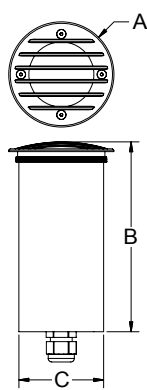
50W max

Voltage:

12 Volts - transformer required, not included

Mounting:

Suitable for floor installations into concrete, masonry or any noncombustible material.
Optional Pour Housing HL-20PH



12V	A	B	C
HL-824	3 3/4"	6 3/4"	3"



HL-826

Compact square MR16 recessed low voltage in-grade fixture with an adjustable light source. Suitable for wet location installations.

Material:

HL-826 - Machined Aluminum, Standard

Finish:

AA - Anodized Satin Aluminum
AP - Aluminum Powder Coat
BK - Black Powder Coat
BZ - Bronze Powder Coat
WT - White Powder Coat

Lamping:

Halogen - MR16 Bi-Pin lamp, not included
LED - 3W, 3000K CCT standard

Wattage:

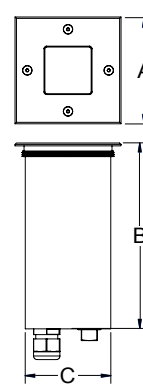
50W max

Voltage:

12 Volts - transformer required, not included

Mounting:

Suitable for floor installations into concrete, masonry or any noncombustible material



12V	A	B	C
HL-826	3 11/16"	6 1/2"	3"

In-Grade Up Lights



HL-834

Solid brass adjustable MR16 halogen in-grade up light. Supplied with 3 feet of SJO low voltage wire. Suitable for wet location installations.

Material:
HL-834 - Machined Brass

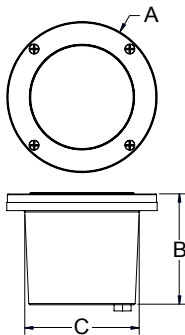
Finish:
N - Natural, for stainless steel & brass

Lamping:
Halogen - MR16 Bi-Pin lamp, not included
LED options available

Wattage:
50W max

Voltage:
12 Volts - transformer required, not included

Mounting:
Suitable for floor installations into concrete, masonry or any noncombustible material.
Optional Pour Housing HL-8PH



12V	A	B	C
HL-834	5 3/8"	3 15/16"	4 1/16"



HL-835

Solid brass adjustable MR16 halogen in-grade up light with protective grill. Supplied with 3 feet of SJO low voltage wire. Suitable for wet location installations.

Material:
HL-835 - Machined Brass

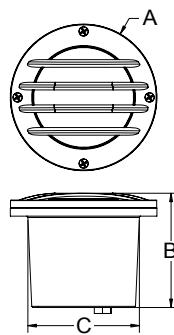
Finish:
N - Natural, for stainless steel & brass

Lamping:
Halogen - MR16 Bi-Pin lamp, not included
LED options available

Wattage:
50W max

Voltage:
12 Volts - transformer required, not included

Mounting:
Suitable for floor installations into concrete, masonry or any noncombustible material.
Optional Pour Housing HL-8PH



12V	A	B	C
HL-835	5 3/8"	4 3/16"	4 1/16"



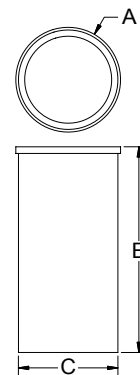
Pour Housings

Pour flange and housing for use with in-grade fixtures. Flange allows the fixture to be mounted flush to grade in concrete or ground. Recommended for all installations.

Material:
Machined Aluminum
Machined Brass

Finish:
AA - Anodized Satin Aluminum
AP - Aluminum Powder Coat
BK - Black Powder Coat
BZ - Bronze Powder Coat
WT - White Powder Coat
N - Natural, for stainless steel & brass

Pour Housings	Application Fixtures
HL-8PH	HL-834, HL-835
HL-10PH	HL-810
HL-12PH	HL-812
HL-20PH	HL-822, HL-824



	A	B	C
HL-8PH	5 11/16"	5"	5 1/8"
HL-10/12PH	3 3/16"	6 3/16"	3"
HL-20PH	3 7/8"	6 9/16"	3 1/2"

LED LIGHTS

HL-915

Powerful LED adjustable accent light.
Machined and designed specifically for high
output LED light source utilizing the latest in
LED and electronic technology.
Suitable for Wet locations installations.

Material:
HL-915 - Machined Aluminum

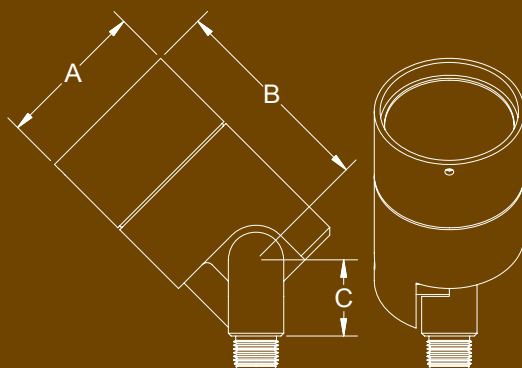
Finish:
AA - Anodized Satin Aluminum
AP - Aluminum Powder Coat
BK - Black Powder Coat
BZ - Bronze Powder Coat
WT - White Powder Coat

Lamping:
LED - 5W or 15W, 3500K CCT standard

Wattage:
5W
15W

Voltage:
12 Volts - transformer required, not included

Mounting:
1/2" NPS thread



12V	A	B	C
HL-915	2 11/16"	3 13/16"	1 3/8"



HL-900

Compact adjustable LED accent light. Designed around the latest in LED technology and built into a fixture produced to stand the test of time.

Suitable for wet location installations..

Material:

HL-900 - Machined Aluminum

Finish:

AA - Anodized Satin Aluminum

AP - Aluminum Powder Coat

BK - Black Powder Coat

BZ - Bronze Powder Coat

WT - White Powder Coat

Lamping:

LED - 3W, 3000K CCT standard

Wattage:

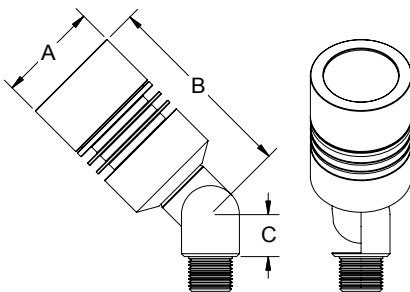
3W

Voltage:

12 Volts - transformer required, not included

Mounting:

1/2" NPS thread



12V	A	B	C
HL-900	1 3/4"	3 3/8"	3/4"



HL-901

Compact LED wall/surface mount accent light. Designed around the latest in LED technology and built into a fixture produced to stand the test of time.

Suitable for wet location installations.

Material:

HL-901 - Machined Aluminum

Finish:

AA - Anodized Satin Aluminum

AP - Aluminum Powder Coat

BK - Black Powder Coat

BZ - Bronze Powder Coat

WT - White Powder Coat

Lamping:

LED - 3W, 3000K CCT standard

Wattage:

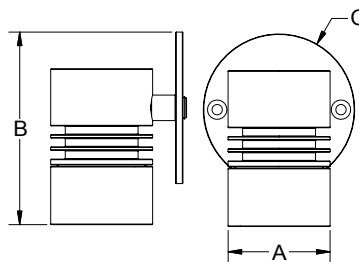
3W

Voltage:

12 Volts - transformer required, not included

Mounting:

1/2" NPS thread



12V	A	B	C
HL-901	1 3/4"	3 5/16"	2 5/8"



HL-902

Compact LED wall mount up & down accent light. Designed around the latest in LED technology and built into a fixture produced to stand the test of time.

Suitable for wet location installations.

Material:

HL-902 - Machined Aluminum

Finish:

AA - Anodized Satin Aluminum

AP - Aluminum Powder Coat

BK - Black Powder Coat

BZ - Bronze Powder Coat

WT - White Powder Coat

Lamping:

LED - 3W, 3000K CCT standard

Wattage:

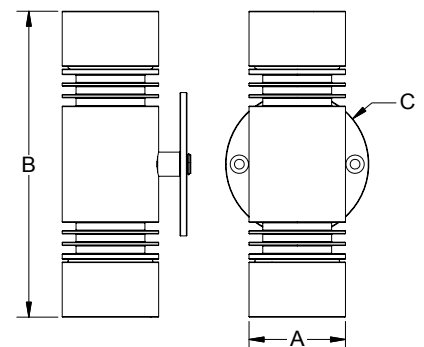
3W each

Voltage:

12 Volts - transformer required, not included

Mounting:

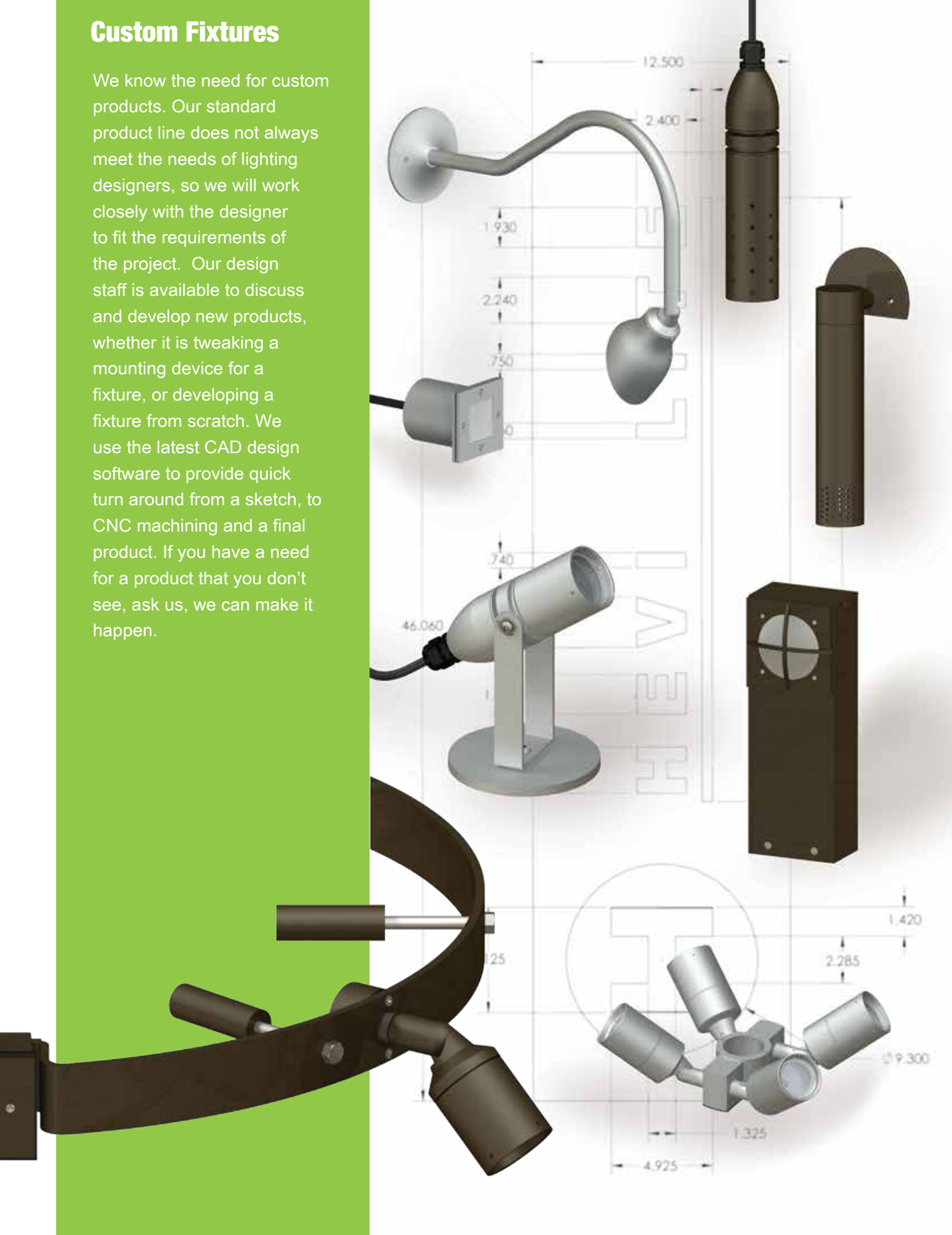
1/2" NPS thread



12V	A	B	C
HL-902	1 3/4"	5 9/16"	2 5/8"

Custom Fixtures

We know the need for custom products. Our standard product line does not always meet the needs of lighting designers, so we will work closely with the designer to fit the requirements of the project. Our design staff is available to discuss and develop new products, whether it is tweaking a mounting device for a fixture, or developing a fixture from scratch. We use the latest CAD design software to provide quick turn around from a sketch, to CNC machining and a final product. If you have a need for a product that you don't see, ask us, we can make it happen.



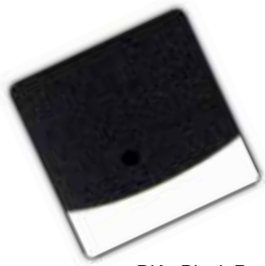
Standard Finishes



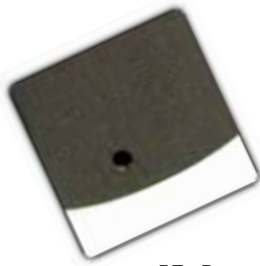
AA - Anodized Satin Aluminum



AP - Aluminum Powder Coat



BK - Black Powder Coat



BZ - Bronze Powder Coat



WT - White Powder Coat

Natural Finishes

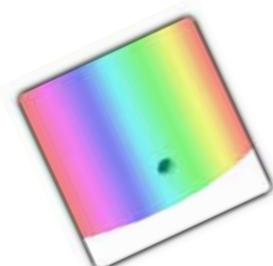


N – Natural Brass



N – Natural Stainless Steel

Custom Finishes



Custom Finishes

Finishes



Material

Hevi Lite parts are machined from 6061 alloy aluminum billet and sheet, 360 brass, and 316 alloy stainless steel. Our materials will stand up to the harshest environments on earth.



Machining

Each component is CNC machined to tolerances within 1000th of an inch to insure that our parts articulate smoothly, fit correctly and seal against the elements.



Finish

Aluminum components undergo a two step degreasing process. Then the parts are submerged in a chromate conversion bath. The powder coat is applied electrostatically and then baked in an oven to insure a hard, durable finish.



Assembly

Each component is re-inspected for fit and appearance prior to assembly. All of our fixtures are assembled by hand in our factory and quality inspected and tested prior to packaging.

Mounting Accesories



GM-1

Noncorrosive composite mounting spike.
Suitable for use with low voltage lighting fixtures.
Dimensions: L - 8 ¾"
Finish: (N)



GM-2

Economy Cast Aluminum Mounting Spike.
Suitable for use with low voltage lighting fixtures.
Dimensions: L - 6 ¾"
Finish: (N)



GM-3

Stainless steel triple prong mounting spike with heavy flat plate. Suitable for low voltage fixtures.
Dimensions: L - 7 ¾"
Finish: (N)



GM-4

Stainless Steel triple prong mounting spike with wiring compartment for low voltage fixtures.
Dimensions: L - 7 ¾"
Finish: (N) Painted upon request



GM-5

Non-corrosive composite mounting spike.
Suitable for low voltage fixtures.
Dimensions: L - 8 ½"
Finish: (N)



GM-6

Cast aluminum mounting spike with wiring box.
Suitable for low voltage connections.
Dimensions: L - 4"
Finish: (BK), (BZ)



GM-7

Stainless steel & brass "Cork Screw" style mounting spike. Suitable for low voltage fixtures.
Dimensions: L - 12"
Finish: (N)



GM-8

Cast brass In-grade J-Box. Suitable for low voltage and line voltage fixtures.
Dimensions: L - 4" x W - 4" x H - 3 ⅝"
Finish: (N)



GM-9

Landscape Power Post. Suitable for low voltage and line voltage fixtures.
Dimensions: 17 ⅜"
Finish: (N)

Surface & Tree Mounts



SM-1

SM-1-2b*

Machined aluminum surface/tree mount for low voltage fixtures.
Dimensions: Ø2 ¼" x H - 1."
Finish: (AA), (AP), (BK), (BZ), (WT), (N)



SM-2

SM-2-2b*

Machined aluminum tree strap with 42" nylon strap, for low voltage fixtures.
Dimensions: Ø2 ¼" x H - 1"
Finish: (AA), (AP), (BK), (BZ), (WT), (N)



SM-2-2x

SM-2-2x-2b*

Machined aluminum tree mount with durable nylon strap. Suitable for low voltage fixtures.
Dimensions: Ø2 ¼" x H - 1"
Finish: (AA), (AP), (BK), (BZ), (WT), (N)



SM-2-3x

SM-2-3x-2b*

Machined aluminum tree mount with adjustable nylon strap. Suitable for low voltage fixtures.
Dimensions: Ø2 ¼" x H - 1"
Finish: (AA), (AP), (BK), (BZ), (WT), (N)



SM-2-4x

SM-2-4x-2b*

Machined aluminum tree mount with adjustable nylon strap. Suitable for low voltage fixtures.
Dimensions: Ø2 ¼" x H - 1"
Finish: (AA), (AP), (BK), (BZ), (WT), (N)



SM-3

Machined aluminum surface/tree mount wiring box. Suitable for low voltage fixtures.
Dimensions: Ø2 ¾" x H - 1 ⅝"
Finish: (AA), (AP), (BK), (BZ), (WT)



SM-4

Rectangular surface/tree mount wiring box. Suitable for low voltage fixtures.
Dimensions: L - 3 ¼" x W - 1 ¼" x H - 1 ⅝"
Finish: (AA), (AP), (BK), (BZ), (WT)



SM-5

SM-5-2x**

Specification grade machined round mounting canopy. Suitable for low/line voltage fixtures.
Dimensions: Ø4 ¾" x H - 1 ¼".
Finish: (AA), (AP), (BK), (BZ), (WT)



SM-9

SM-9-2x**

Surface mount canopy with integral electronic 120/12-Volt transformer. 75W max.
Dimensions: Ø4 ¾" x H - 2 ⅜"
Finish: (AA), (AP), (BK), (BZ), (WT)

Wall Mounts



WM-1

4 3/4" specification grade machined aluminum round wall plate.
Dimensions: Ø4 3/4"
Finish: (AA), (AP), (BK), (BZ), (WT), (N)

WM-1-2b*



WM-1-2x

Dual 4 3/4" specification grade machined aluminum round wall plate.
Dimensions: Ø4 3/4"
Finish: (AA), (AP), (BK), (BZ), (WT), (N)

WM-1-2x-2b*



WM-2

3 1/2" machined aluminum round wall plate.
Dimensions: Ø3 1/2"
Finish: (AA), (AP), (BK), (BZ), (WT), (N)

WM-2-2b*



WM-3

4 3/4" specification grade machined aluminum square wall plate.
Dimensions: L - 4 3/4" x W - 4 3/4"
Finish: (AA), (AP), (BK), (BZ), (WT), (N)

WM-3-2b*



WM-4

3 1/4" small machined aluminum square mounting plate.
Dimensions: Ø3 1/4"
Finish: (AA), (AP), (BK), (BZ), (WT), (N)

WM-4-2b*



WM-5

Cast aluminum round wall plate.
Dimensions: Ø4 1/2"
Finish: (AA), (AP), (BK), (BZ), (WT)

WM-6**



WM-7

Cast aluminum rectangular wall plate.
Dimensions: L - 4 5/8" x W - 2 1/16"
Finish: (AA), (AP), (BK), (BZ), (WT)

WM-8**



WM-9

Wall mount canopy with integral electronic 120/12-Volt transformer. 75W max.
Dimensions: Ø4 3/4" x H - 2 3/8"
Finish: (AA), (AP), (BK), (BZ), (WT)



WM-9-2x

Dual wall mount canopy with integral electronic 120/12-Volt transformer. 60W max each.
Dimensions: Ø4 3/4" x H - 2 3/8"
Finish: (AA), (AP), (BK), (BZ), (WT)

J-Boxes



HL-JB1

Cast aluminum rectangular surface J-box. Suitable for low voltage and line voltage fixtures.
Dimensions: L - 4 5/8" x W - 2 15/16" x H - 2".
Finish: (AP), (BK), (BZ), (WT)



HL-JB2

Cast aluminum rectangular surface J-box. Suitable for low voltage and line voltage fixtures.
Dimensions: Ø4 1/8" x H - 2".
Finish: (AP), (BK), (BZ), (WT)



HL-JB3

Cast brass mounting box. Suitable for low voltage and line voltage fixtures.
Dimensions: L - 4" x W - 4" x H - 3 5/8".
Finish: (N)



HL-JB4

Composite in-grade wiring box for remote metal halide H-POD ballasts.
Dimensions: L - 12" x W - 12" x H - 6".
Finish: (N)



HL-199-JB

4" octagonal J-box with 3" mud ring for use with GWS series fixtures.
Dimensions: L - 4" x W - 4" x H - 2 1/2".
Finish: (N)

Extensions



HL-EXT-xx

Custom length machined aluminum extension stem with 1/2" NPS thread. Extension stems are machined cut to length here at our factory to ensure exact specifications. Specify HL-EXT-xx (xx = Overall length in inches - e.g., HL-EXT-12). Suitable for wet location installations.
Finish: (AA), (AP), (BK), (BZ), (WT)

* This accessory is made from machined solid brass.

** This accessory mounts two fixtures

Glare Shields



GL-1

MR8 machined aluminum angled glare shield.
Dimensions: Ø1 7/16" x H - 1 7/8"
Finish: (AA), (AP), (BK), (BZ), (WT), (N)

GL-2*



GL-3

MR8 machined aluminum straight glare shield.
Dimensions: Ø1 7/16" x H - 1 7/8"
Finish: (AA), (AP), (BK), (BZ), (WT), (N)

GL-4*



GL-5

MR11 machined aluminum angled glare shield.
Dimensions: Ø1 15/16" x H - 2 1/2"
Finish: (AA), (AP), (BK), (BZ), (WT), (N)

GL-6*



GL-7

MR11 machined aluminum straight glare shield.
Dimensions: Ø1 15/16" x H - 2 1/2"
Finish: (AA), (AP), (BK), (BZ), (WT), (N)

GL-8*



GL-10

MR16 machined aluminum short angled glare shield.
Dimensions: Ø2 1/2" x H - 2 1/16"
Finish: (AA), (AP), (BK), (BZ), (WT)



GL-11

MR16 machined aluminum long angled glare shield.*Brass
Dimensions: Ø2 1/2" x H - 3 7/8"
Finish: (AA), (AP), (BK), (BZ), (WT), (N)

GL-12*



GL-13

MR16 machined aluminum straight glare shield.
Dimensions: Ø2 1/2" x H - 3 7/8"
Finish: (AA), (AP), (BK), (BZ), (WT), (N)

GL-14*



GL-21

PAR20 machined aluminum angled glare shield.
Dimensions: Ø2 3/4" x H - 2 7/8"
Finish: (AA), (AP), (BK), (BZ), (WT), (N)

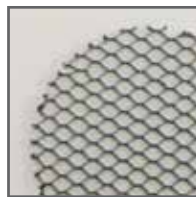
GL-22*



GL-40

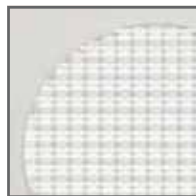
Flood light aluminum glare shield for HL-390 & HL-410.
Dimensions: L - 1 3/4" x W - 4 3/8" x H - 2 1/8"
Finish: (AA), (AP), (BK), (BZ), (WT)

Lenses & Louvers



Hexcell Louvers

LA-1 MR16 Hex Cell Louver
LA-1-8 MR8 Hex Cell Louver
LA-1-11 MR11 Hex Cell Louver
LA-1-20 PAR20 Hex Cell Louver
LA-1-30 PAR30 Hex Cell Louver
LA-1-38 PAR38 Hex Cell Louver



Prismatic Spread Lenses

LA-2 MR16 Prismatic Spread Lens
LA-2-8 MR8 Prismatic Spread Lens
LA-2-11 MR11 Prismatic Spread Lens
LA-2-20 PAR20 Prismatic Spread Lens



Linear Spread Lenses

LA-3 MR16 Linear Spread Lens
LA-3-8 MR8 Linear Spread Lens
LA-3-11 MR11 Linear Spread Lens
LA-3-20 PAR20 Linear Spread Lens



Soft Focus Lenses

LA-4 MR16 Soft Focus Lens
LA-4-8 MR8 Soft Focus Lens
LA-4-11 MR11 Soft Focus Lens
LA-4-20 PAR20 Soft Focus Lens



Moon Light Color Filters

LA-5 MR16 Moon Light Color Filter
LA-5-8 MR8 Moon Light Color Filter
LA-5-11 MR11 Moon Light Color Filter
LA-5-20 PAR20 Moon Light Color Filter



Blue Color Filters

LA-6 MR16 Blue Color Filter
LA-6-8 MR8 Blue Color Filter
LA-6-11 MR11 Blue Color Filter
LA-6-20 PAR20 Blue Color Filter



LA-820

LA-820 Lens and louver holder for HL-820, HL-822



LA-9

LA-9 Louder & lens holder for use with MR16 fixtures.

* This accessory is machined from solid brass.

Transformers



Electronic Transformers

Electronic transformer for use with low voltage light fixtures.

Voltage: 120/12 VAC

HLT-40E	40W	2 $\frac{3}{16}$ " x 1 $\frac{1}{4}$ " x $\frac{7}{8}$ "
HLT-60E	60W	2 $\frac{1}{16}$ " x 1 $\frac{1}{4}$ " x $\frac{3}{4}$ "
HLT-75E	75W	2 $\frac{1}{16}$ " x 1 $\frac{1}{4}$ " x $\frac{3}{4}$ "
HLT-105E	105W	3 $\frac{1}{8}$ " x 1 $\frac{3}{8}$ " x $\frac{7}{8}$ "
HLT-150E	150W	3 $\frac{3}{8}$ " x 1 $\frac{3}{8}$ " x 1 $\frac{1}{16}$ "



Indoor/Outdoor Transformers

Standard Class I transformers for use with low voltage light fixtures

Voltage: 120/12 VAC. 277/12 VAC available

HLT-100	100W	4 $\frac{7}{8}$ " x 4 $\frac{5}{8}$ " x 6 $\frac{3}{4}$ "
HLT-150	150W	4 $\frac{7}{8}$ " x 4 $\frac{5}{8}$ " x 6 $\frac{3}{4}$ "
HLT-250	250W	4 $\frac{7}{8}$ " x 4 $\frac{5}{8}$ " x 6 $\frac{3}{4}$ "
HLT-300	300W	4 $\frac{7}{8}$ " x 4 $\frac{5}{8}$ " x 6 $\frac{3}{4}$ "
HLT-500	500W	4 $\frac{7}{8}$ " x 4 $\frac{5}{8}$ " x 6 $\frac{3}{4}$ "
HLT-600	600W	4 $\frac{7}{8}$ " x 4 $\frac{5}{8}$ " x 6 $\frac{3}{4}$ "
HLT-750	750W	5 $\frac{5}{8}$ " x 5 $\frac{1}{4}$ " x 8 $\frac{1}{4}$ "
HLT-1000	1000W	5 $\frac{5}{8}$ " x 5 $\frac{1}{4}$ " x 10 $\frac{1}{4}$ "



Direct Burial Transformers

Direct burial transformer for use with low voltage fixtures.

Voltage: 120/12 VAC. 277/12 VAC available

HLT-DB-100	100W	13 $\frac{1}{4}$ " x 13 $\frac{3}{8}$ " x 7 $\frac{1}{16}$ "
HLT-DB-300	300W	13 $\frac{1}{4}$ " x 13 $\frac{3}{8}$ " x 7 $\frac{1}{16}$ "
HLT-DB-600	600W	13 $\frac{1}{4}$ " x 13 $\frac{3}{8}$ " x 7 $\frac{1}{16}$ "

LED Transformers

LED transformer for use with LED light fixtures.

Voltage: 120/12 VAC



Electronic

HLT-60E-LED	60W	2 $\frac{1}{16}$ " x 1 $\frac{1}{4}$ " x $\frac{3}{4}$ "
-------------	-----	--



Magnetic

HLT-20M	20W	5" x 2 $\frac{1}{8}$ " x 2"
HLT-40M	40W	5" x 2 $\frac{1}{8}$ " x 2"
HLT-50M	50W	5" x 2 $\frac{1}{8}$ " x 2"
HLT-60M	60W	6 $\frac{1}{16}$ " x 2 $\frac{3}{16}$ " x 2 $\frac{3}{16}$ "
HLT-100M	100W	6 $\frac{1}{16}$ " x 2 $\frac{3}{16}$ " x 2 $\frac{3}{16}$ "

Ballasts Metal Halide



Ballast Enclosure

3R rated rain stainless steel ballast enclosure with integral electronic metal halide ballast.

Voltage: 120-277 VAC

Dimensions: L - 2 $\frac{1}{16}$ " x W - 4 $\frac{3}{16}$ " x H - 7 $\frac{1}{4}$ "

Finish: (N)

HL-RB-20	20W
HL-RB-35	39W
HL-RB-70	70W



Ballast Pod

In-grade ballast pod with integral electronic metal halide ballast. For use with HL-JB-4 type box.

Voltage: 120-277 VAC

Dimensions: Ø6" x H - 3 $\frac{3}{8}$ "

Finish: (AA), (AP), (BK), (BZ), (WT)

H-POD-20	20W
H-POD-35	39W
H-POD-70	70W



Dual Ballast Pod

In-grade dual ballast pod with integral electronic metal halide ballast. For use with two fixtures, use with HL-JB-4 type box.

Voltage: 120-277 VAC

Dimensions: Ø6" x H - 3 $\frac{15}{16}$ "

Finish: (AA), (AP), (BK), (BZ), (WT)

H-POD-20-2x	20W
H-POD-35-2x	39W
H-POD-70-2x	70W



Surface Mount Ballast Canopy

Surface mount metal halide canopy with integral electronic ballast.

Voltage: 120-277 VAC

Dimensions: Ø5 $\frac{1}{2}$ " x H - 2 $\frac{3}{8}$ "

Finish: (AA), (AP), (BK), (BZ), (WT)

SMEB-20	20W
SMEB-35	39W
SMEB-70	70W



Wall Mount Ballast Canopy

Wall mount metal halide ballast canopy with electronic integral ballast.

Voltage: 120-277 VAC

Dimensions: Ø5 $\frac{1}{2}$ " x H - 2 $\frac{3}{8}$ "

Finish: (AA), (AP), (BK), (BZ), (WT)

WMEB-20	20W
WMEB-35	39W
WMEB-70	70W

Lamps

Miniature Bi-pin Lamps

Size: T3
 Type: Halogen and Xenon
 Base: G4, G6.35 and GY6.35
 Voltage: 12V Wattage: 10-50W

**MR8 Bi-pin Lamps**

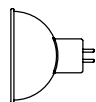
Size: MR8
 Type: Halogen
 Base: G4
 Voltage: 12V Wattage: 20-50W

**MR11 Bi-pin Lamps**

Size: MR11
 Type: Halogen
 Base: G4
 Voltage: 12V Wattage: 20-50W

**MR16 Bi-pin Lamps**

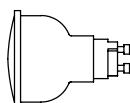
Size: MR16
 Type: Halogen
 Base: GU5.3
 Voltage: 12V Wattage: 20-50W

**Mini Candelabra Lamps**

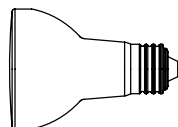
Size: T4
 Type: Halogen
 Base: E11
 Voltage: 120V Wattage: 20-100W

**MR16 Twist & Lock Lamps**

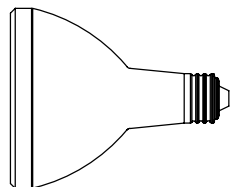
Size: MR16
 Type: Halogen
 Base: GU10
 Voltage: 120V Wattage: 20-50W

**PAR20 Lamps**

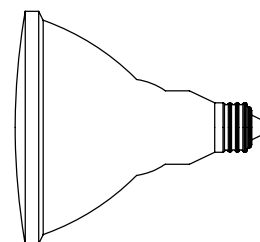
Size: PAR20
 Type: Halogen
 Base: E26 medium base
 Voltage: 120V Wattage: 35-50W

**PAR30 Lamps**

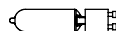
Size: PAR30
 Type: Halogen
 Base: E26 medium base
 Voltage: 120V Wattage: 40-75W

**PAR38 Lamps**

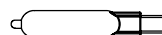
Size: PAR38
 Type: Halogen
 Base: E26 medium base
 Voltage: 120V Wattage: 45-250W

**G6.5 Metal Halide Lamps**

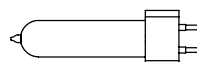
Size: T4.5-6
 Type: HID Metal Halide
 Base: G6.5
 Wattage: 20-70W

**G8.5 Metal Halide Lamps**

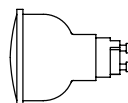
Size: T4.5-6
 Type: HID Metal Halide
 Base: G8.5
 Wattage: 20-70W

**G12 Metal Halide Lamps**

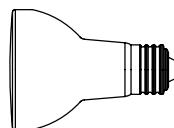
Size: T4.5-6
 Type: HID Metal Halide
 Base: G12
 Wattage: 20-70W

**MR16 Metal Halide Twist &**

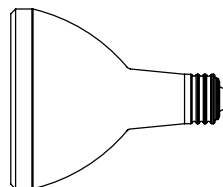
Size: MR16
 Type: HID Metal Halide
 Base: GX10
 Wattage: 20-39W

**PAR20 Metal Halide Lamps**

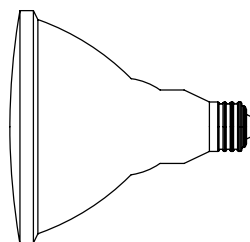
Size: PAR20
 Type: HID Metal Halide
 Base: E26 Medium Base
 Wattage: 20-39W

**PAR30 Metal Halide Lamps**

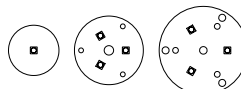
Size: PAR30
 Type: HID Metal Halide
 Base: E26 Medium Base
 Wattage: 20-70W

**PAR38 Metal Halide Lamps**

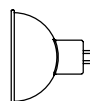
Size: PAR38
 Type: HID Metal Halide
 Base: E26 Medium Base
 Wattage: 20-100W

**1W LED, 3W LED, 8W LED**

Size: 1", 1 3/8" & 1 3/4"
 Type: LED
 Current: 350-700mA
 Wattage: 1-8W

**MR16 LED Bi-pin Lamps**

Size: MR16
 Type: LED
 Base: GU5.3
 Voltage: 12V Wattage: 4W, 9.5W



GWS Step Lights	2-4	HL-822/ HL-822-LED	34	LA-1-38	42
HL-105/ HL-105-LED	2	HL-824/ HL-824-LED	34	LA-1-380	42
HL-106/ HL-106-LED	3	HL-826/ HL-826-LED	34	Prismatic Spread Lenses	42
HL-107/ HL-107-LED	3	HL-834	35	LA-2	42
HL-109/ HL-109-LED	3	HL-835	35	LA-2-8	42
HL-115/ HL-115-LED	4	Pour Housings	35	LA-2-11	42
HL-116/ HL-116-LED	4	HL-8PH	35	LA-2-20	42
HL-117/ HL-117-LED	4	HL-10PH	35	Linear Spread Lenses	42
BDS Step Lights	6-7	HL-12PH	35	LA-3	42
HL-210/ HL-210-LED	6	HL-20PH	35	LA-3-8	42
HL-220/ HL-220-LED	7	LED Lights	36-37	LA-3-11	42
HL-230/ HL-230-LED	7	HL-900	37	LA-3-20	42
HL-240/ HL-240-LED	7	HL-901	37	Soft Focus Lenses	42
Accent Lights 12v	8-11	HL-902	37	LA-4	42
HL-300/ HL-300-LED	9	HL-915	36	LA-4-8	42
HL-306/ HL-306-LED	9	Extensions	41	LA-4-11	42
HL-310/ HL-310-LED	9	HL-EXT	41	LA-4-20	42
HL-320/ HL-320-LED	21	Mounting Accessories	40	Moon Light Color Filters	42
HL-330/ HL-330-LED	21	GM-1	40	LA-5	42
HL-336/ HL-336-LED	10	GM-2	40	LA-5-8	42
HL-360/ HL-360-LED	8, 10	GM-3	40	LA-5-11	42
HL-365/ HL-365-LED	10	GM-4	40	LA-5-20	42
HL-367/ HL-367-LED	11	GM-5	40	Blue Color Filters	42
HL-368/ HL-368-LED	11	GM-6	40	LA-6	42
HL-369/ HL-369-LED	11	GM-7	40	LA-6-8	42
Accent Lights 120v	12-16	GM-8	40	LA-6-11	42
HL-370	12, 14	GM-9	40	LA-6-20	42
HL-372	13	Surface & Tree Mounts	40	Lens Accessories	42
HL-380/ HL-380-LED	13	SM-1	40	LA-9	42
HL-386	13	SM-2	40	LA-820	42
HL-387	14	SM-2-2x	40	Ballasts Metal Halide	43
HL-388	14	SM-3	40	Ballast Enclosure	43
Wall & Surface Mount	20-25	SM-4	40	HL-RB-20	43
HL-340/ HL-340-LED	21	SM-5	40	HL-RB-35	43
HL-340-2x/ HL-340-2x-LED	22	SM-5-2x	40	HL-RB-70	43
HL-373	22	SM-9	40	Ballast Pod	43
HL-374	20, 22	SM-9-2x	40	H-POD-20	43
HL-374-2x	23	J-Boxes	41	H-POD-35	43
HL-376	23	HL-199-JB	41	H-POD-70	43
HL-376-2x	23	HL-JB1	41	Dual Ballast Pod	43
HL-384/ HL-384-LED	24	HL-JB2	41	H-POD-20-2x	43
HL-384-2x/ HL-384-2x-LED	24	HL-JB3	41	H-POD-35-2x	43
Flood Lights	18-19	HL-JB4	41	H-POD-70-2x	43
HL-390	18	Wall Mounts	41	Surface Mount Ballast Canopy	43
HL-391/ HL-391-LED	19	WM-1	41	SMEB-20	43
Flood Lights Metal Halide	19	WM-2	41	SMEB-35	43
HL-400	19	WM-3	41	SMEB-70	43
HL-410	19	WM-4	41	Wall Mount Ballast Canopy	43
Accent Lights Metal Halide	15-16	WM-5	41	WMEB-20	43
HL-414	15	WM-6	41	WMEB-35	43
HL-416	15	WM-7	41	WMEB-70	43
HL-420	15	WM-8	41	Transformers	43
HL-426	16	WM-9	41	Direct Burial Transformers	43
HL-430	16	WM-9-2x	41	HLT-DB-100	43
HL-438	16	Glare Shields	42	HLT-DB-300	43
Wall & Surface Mount Metal Halide	24-25	GL-1	42	HLT-DB-600	43
HL-474	24	GL-2	42	Electronic Transformers	43
HL-474-2x	25	GL-3	42	HLT-40E	43
HL-476	25	GL-4	42	HLT-60E	43
HL-476-2x	25	GL-5	42	HLT-75E	43
Path Lights	26-27	GL-6	42	HLT-105E	43
HL-616/ HL-616-LED	27	GL-7	42	HLT-150E	43
HL-620/ HL-620-LED	26	GL-8	42	Indoor/Outdoor Transformers	43
HL-626/ HL-626-LED	27	GL-10	42	HLT-100	43
Sign/Post Lights	28-31	GL-11	42	HLT-150	43
HL-706/ HL-706-LED	29	GL-12	42	HLT-250	43
HL-707/ HL-707-LED	29	GL-13	42	HLT-300	43
HL-716/ HL-716-LED	29	GL-14	42	HLT-500	43
HL-726/ HL-726-LED	30	GL-21	42	HLT-600	43
HL-727/ HL-727-LED	30	GL-22	42	HLT-1000	43
HL-736/ HL-736-LED	28, 30	GL-40	42	HLT-7500	43
HL-737/ HL-737-LED	31	Lenses & Louvers	42	Step Light Order Guide	5
HL-746/ HL-746-LED	31	Hexcell Louvers	42	Metal Halide Order Guide	17
HL-747/ HL-747-LED	31	LA-1	42	Custom Fixtures	38
In-grade Up Lights	32-35	LA-1-8	42	Finishes	39
HL-810/ HL-810-LED	33	LA-1-11	42	Lamps	44
HL-812/ HL-812-LED	33	LA-1-20	42		
HL-820/ HL-820-LED	32, 33	LA-1-30	42		



HEVI LITE

Product Families:

Step Lights
Accent Lights
Flood Lights
Wall & Surface Mount Lights
Path/Area Lights
Sign/Post Lights
In-grade Up Lights
LED Lights
Special Application
Custom Lighting

Featuring
HEVI LED Series

 **HEVI LITE, INC.**

9714 Variel Avenue, Chatsworth, CA 91311 • TEL 818.341.8091 • FAX 818.998.1986

www.HEVILITE.com

MADE IN THE USA

Rev. B013