

FLOOD LIGHTS

HL-390

Compact adjustable T4 120V halogen flood light. Suitable for wet location installations.

Material:

HL-390 - Machined Aluminum, Standard

Finish:

AA - Anodized Satin Aluminum

AP - Aluminum Powder Coat

BK - Black Powder Coat

BZ - Bronze Powder Coat

WT - White Powder Coat

Lamping:

Halogen - T4 E11 Mini Can lamp, not Included

Wattage:

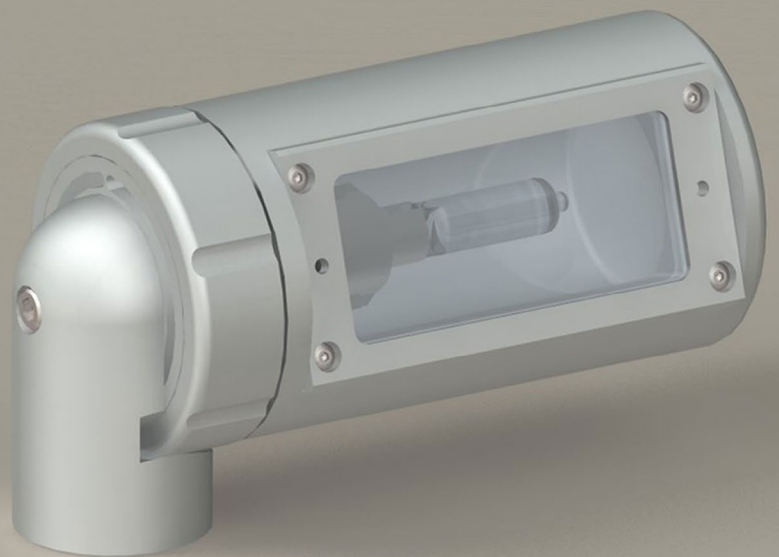
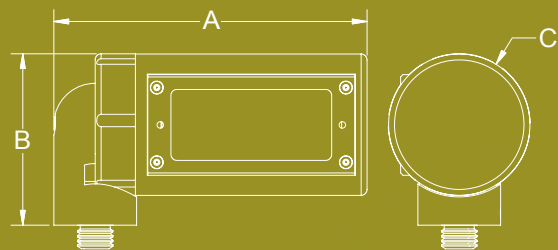
100W max

Voltage:

120 Volts

Mounting:

1/2" NPS thread



120V	A	B	C
HL-390	6 5/8"	3 5/8"	3"





HL-391

Ultra Compact T4 halogen flood light. Suitable for wet location installations.

Material:
HL-391 - Machined Aluminum, Standard

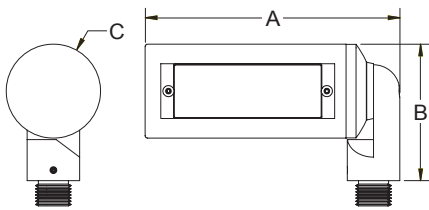
Finish:
AA - Anodized Satin Aluminum
AP - Aluminum Powder Coat
BK - Black Powder Coat
BZ - Bronze Powder Coat
WT - White Powder Coat

Lamping:
Halogen - G6.35 Bi-Pin lamp, not Included
LED - 3W or 8W, 3000K CCT standard

Wattage:
50W max

Voltage:
12 Volts - transformer required, not included

Mounting:
1/2" NPS thread



12V	A	B	C
HL-391	6"	3 1/4"	2 1/4"



HL-392

Ultra Compact T4 halogen flood light. Suitable for wet location installations.

Material:
HL-392 - Machined Aluminum, Standard

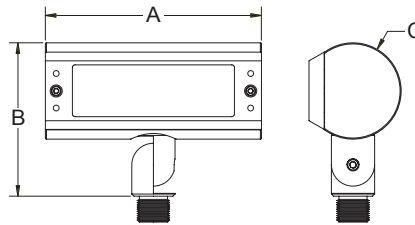
Finish:
AA - Anodized Satin Aluminum
AP - Aluminum Powder Coat
BK - Black Powder Coat
BZ - Bronze Powder Coat
WT - White Powder Coat

Lamping:
Halogen - G6.35 Bi-Pin lamp, not Included

Wattage:
50W max

Voltage:
12 Volts - transformer required, not included

Mounting:
1/2" NPS thread



12V	A	B	C
HL-392	5"	3 5/16"	2 1/4"



HL-393

Compact T4 halogen flood light. Suitable for wet location installations.

Material:
HL-393 - Machined Aluminum, Standard

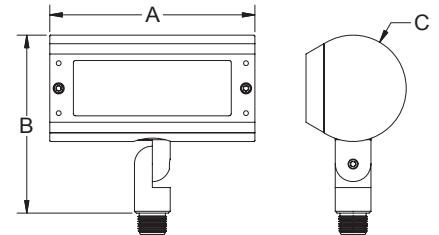
Finish:
AA - Anodized Satin Aluminum
AP - Aluminum Powder Coat
BK - Black Powder Coat
BZ - Bronze Powder Coat
WT - White Powder Coat

Lamping:
Halogen - G6.35 Bi-Pin lamp, not Included

Wattage:
75W max

Voltage:
12 Volts - transformer required, not included

Mounting:
1/2" NPS thread



12V	A	B	C
HL-393	5 3/4"	5"	3"

Flood Lights



HL-395

Compact adjustable T4 120V flood light. Suitable for wet location installations.

Material:
HL-395 - Machined Aluminum, Standard

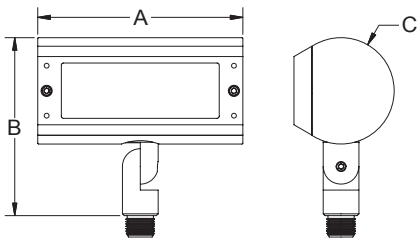
Finish:
AA - Anodized Satin Aluminum
AP - Aluminum Powder Coat
BK - Black Powder Coat
BZ - Bronze Powder Coat
WT - White Powder Coat

Lamping:
Halogen - T4 E11 Mini-Can lamp, not Included

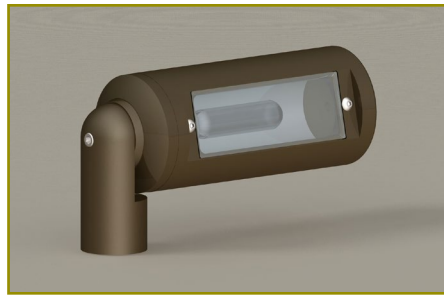
Wattage:
100W max

Voltage:
120 Volts

Mounting:
1/2" NPS thread



120V	A	B	C
HL-395	5 3/4"	5"	3"



HL-400

Ultra compact adjustable T4 metal halide flood light. Remote electronic ballast included. Suitable for wet location installations.

Material:
HL-400 - Machined Aluminum, Standard

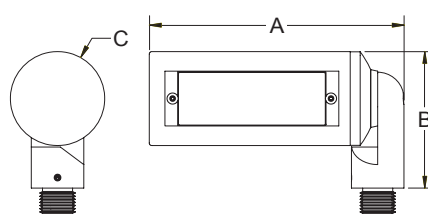
Finish:
AA - Anodized Satin Aluminum
AP - Aluminum Powder Coat
BK - Black Powder Coat
BZ - Bronze Powder Coat
WT - White Powder Coat

Lamping:
HID Metal Halide - T4 G8.5 lamp, not Included

Wattage:
20W or 39W

Ballast:
Metal halide ballast required, multi-volt electronic metal halide ballast included

Mounting:
1/2" NPS thread



HID	A	B	C
HL-400	6"	3 1/4"	2 1/4"



HL-405

Compact adjustable T4 metal halide flood light. Remote electronic ballast included. Suitable for wet location installations.

Material:
HL-405 - Machined Aluminum, Standard

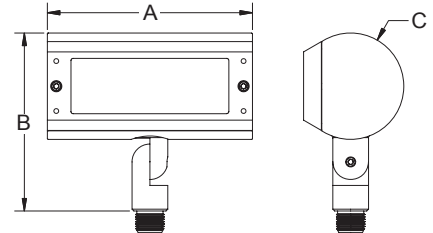
Finish:
AA - Anodized Satin Aluminum
AP - Aluminum Powder Coat
BK - Black Powder Coat
BZ - Bronze Powder Coat
WT - White Powder Coat

Lamping:
HID Metal Halide - T4 G8.5 lamp, not Included

Wattage:
20W, 39W or 70W

Ballast:
Metal halide ballast required, multi-volt electronic metal halide ballast included

Mounting:
1/2" NPS thread



HID	A	B	C
HL-405	5 3/4"	5"	3"



HL-410

Compact adjustable T6 metal halide flood light. Remote electronic ballast included. Suitable for wet location installations.

Material:
HL-410 - Machined Aluminum, Standard

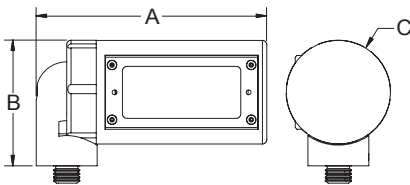
Finish:
AA - Anodized Satin Aluminum
AP - Aluminum Powder Coat
BK - Black Powder Coat
BZ - Bronze Powder Coat
WT - White Powder Coat

Lamping:
HID Metal Halide - T6 G12 lamp, not Included

Wattage:
20W, 39W or 70W

Ballast:
Metal halide ballast required, multi-volt electronic metal halide ballast included

Mounting:
1/2" NPS thread



HID	A	B	C
HL-410	6 5/8"	3 5/8"	3"



HL-904

Compact adjustable LED flood light. Suitable for wet location installations.

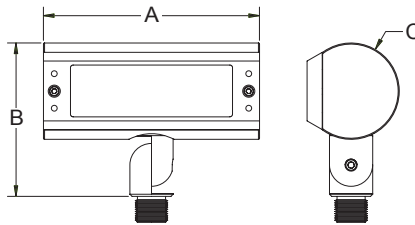
Material:
HL-904 - Machined Aluminum, Standard

Finish:
AA - Anodized Satin Aluminum
AP - Aluminum Powder Coat
BK - Black Powder Coat
BZ - Bronze Powder Coat
WT - White Powder Coat

Lamping:
LED - Warm white, 3000K color temp standard
3x1W LED
3x2.7W LED

Voltage:
12 Volts - transformer required, not included

Mounting:
1/2" NPS thread



12V	A	B	C
HL-904	5"	5 9/16"	2 1/4"



HL-905

Compact adjustable LED flood light. Suitable for wet location installations.

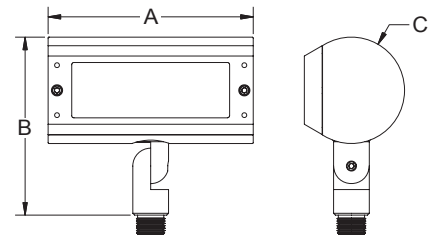
Material:
HL-905 - Machined Aluminum, Standard

Finish:
AA - Anodized Satin Aluminum
AP - Aluminum Powder Coat
BK - Black Powder Coat
BZ - Bronze Powder Coat
WT - White Powder Coat

Lamping:
LED - Warm white, 3000K color temp standard
3x1W LED
3x2.7W LED

Voltage:
12 Volts - transformer required, not included

Mounting:
1/2" NPS thread



12V	A	B	C
HL-905	5 3/4"	5"	3"

HEVI LITE, INC.

TEL 818.341.8091 • FAX 818.998.1986

www.HEVILITE.com

MADE IN THE USA