

SPECIFICATIONS

DESCRIPTION:

MR11 hanging pendant fixture. Suitable for wet/damp/dry location installation.

MATERIAL:

Standard overall material is 6061 aluminum.
C01501 - Machined Aluminum

FINISH:

- AA - Anodized Satin Aluminum
- AP - Powder Coat Aluminum
- BK - Powder Coat Black
- BZ - Powder Coat Bronze
- WT - Powder Coat White

HALOGEN LAMPING OPTION:

Lamp Type - 12V halogen MR11 lamp, bi-pin G4 base, 35W max, not included (standard).

LED OPTIONS:

Integral high output LED, warm white 85 CRI
2700K or 3000K Standard (4000K available)

3LED - 3W (180 lumens)

OPTICS

- SP - Spot, 12°
- NF - Narrow Flood, 24°
- FL - Flood, 36°

VOLTAGE:

12 - 12 VAC output transformer required, not included. 15ft SJO cord, included.

MOUNTING:

Fixture is equipped with a cord to hang from a tree/surface.

OPTIONS:

Lenses/ Color Filters

- LA-2-11 - Prismatic lens
- LA-3-11 - Linear spread lens
- LA-4-11 - Soft focus lens (diffused)
- LA-5-11 - Moonlight lens
- LA-6-11 - Blue lens

Louvers

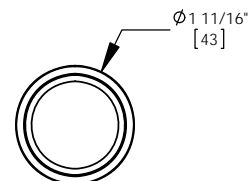
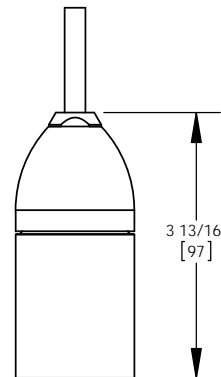
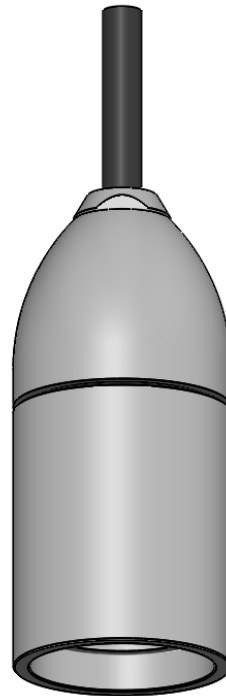
- LA-1-11 - Hexcell Louver (Black)

See fixture accessories for more informaton.

RATING:

Wet/damp/dry location.

MADE IN THE USA



PROJECT:	H HEVI LITE, INC. 9714 Variel Ave, Chatsworth, CA 91311 Tel., (818) 341-8091 - Fax (818) 998-1986 Web Site http://www.hevilite.com
APPROVED:	
NOTE:	CUSTOM NUMBER:
TYPE:	C01501