

# SPECIFICATIONS

**DESCRIPTION:**

Compact surface mount MR11 accent light.  
Suitable for wet/damp/dry location installations.

**MATERIAL:**

Standard overall material is 6061 aluminum.

**FINISH:**

- AA - Anodized Satin Aluminum
- AP - Powder Coat Aluminum
- BK - Powder Coat Black
- BZ - Powder Coat Bronze
- WT - Powder Coat White

**HALOGEN LAMPING OPTION:**

Lamp Type - 12V halogen MR11 lamp, bi-pin G4 base, 35W max, not included (standard).

**LED OPTIONS:**

Integral high output LED, warm white 85 CRI  
**2700K or 3000K Standard (4000K available)**

**3LED - 3W (180 lumens)**

**OPTICS**

- SP - Spot, 12°
- NF - Narrow Flood, 24°
- FL - Flood, 36°

**VOLTAGE:**

**12** - 12 VAC output transformer required, not included.

**MOUNTING:**

Fixture is designed with a fixed 1/2" NPS mount.

**OPTIONS:**

Glare shields

- GL-5 - Angled, aluminum
- GL-6 - Angled, brass
- GL-7 - Straight, aluminum
- GL-8 - Straight, brass

Lenses/Louvers/Color Filters

- LA-1-11 - Hexcell Louver (Black)
- LA-2-11 - Prismatic lens
- LA-3-11 - Linear spread lens
- LA-4-11 - Soft focus lens (diffused)
- LA-5-11 - Moonlight lens
- LA-6-11 - Blue lens

See fixture accessories for more information.

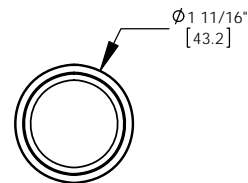
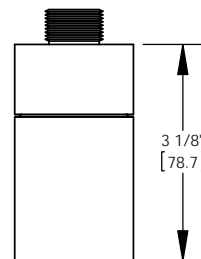
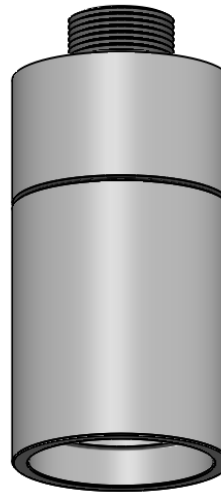
**SAMPLE ORDER SPECIFICATION:**

HL-316-BZ-12-GL-5-LA-6-11

**RATING:**

Wet/damp/dry location.

**MADE IN THE USA**



ORDER SPECIFICATION: \_\_\_\_\_ - \_\_\_\_\_ - \_\_\_\_\_ - \_\_\_\_\_ - \_\_\_\_\_  
Fixture Finish Lamping Voltage Options/Access.

PROJECT: \_\_\_\_\_  
 APPROVED: \_\_\_\_\_  
 NOTE: \_\_\_\_\_  
 TYPE: \_\_\_\_\_

**HEVI LITE, INC.**  
 9714 Variel Ave, Chatsworth, CA 91311  
 Tel., (818) 341-8091 - Fax (818) 998-1986  
 Web Site <http://www.hevilite.com>

CATALOG NUMBER:  
**HL-316**