

# SPECIFICATIONS

## DESCRIPTION:

Compact MR11 adjustable accent fixture with integral angled glare shield. Suitable for wet/damp/dry location installations.

## MATERIAL:

Standard overall material is 6061 aluminum.

**HL-319** - Machined Aluminum

## FINISH:

**AA** - Anodized Satin Aluminum

**AP** - Powder Coat Aluminum

**BK** - Powder Coat Black

**BZ** - Powder Coat Bronze

**WT** - Powder Coat White

## HALOGEN LAMPING OPTION:

Lamp Type - 12V halogen MR11 lamp, bi-pin G4 base, 35W max, not included (standard).

## LED OPTIONS:

Integral high output LED, warm white 85 CRI (90 available)

**2700K** or **3000K** Standard (**4000K** available)

**3LED** - 3W (180 lumens)

## OPTICS

**SP** - Spot, 12°

**NF** - Narrow Flood, 24°

**FL** - Flood, 36°

## VOLTAGE:

**12** - 12 VAC output transformer required, not included.

## MOUNTING:

Fixture is designed with a 1/2-NPS adjustable mounting stem.

## OPTIONS:

Lenses/Louvers/Color Filters

**LA-1-11** - Hexcell Louver (Black)

**LA-2-11** - Prismatic lens

**LA-3-11** - Linear spread lens

**LA-4-11** - Soft focus lens (diffused)

**LA-5-11** - Moonlight lens

**LA-6-11** - Blue lens

See fixture accessories for more information.

## SAMPLE ORDER SPECIFICATION:

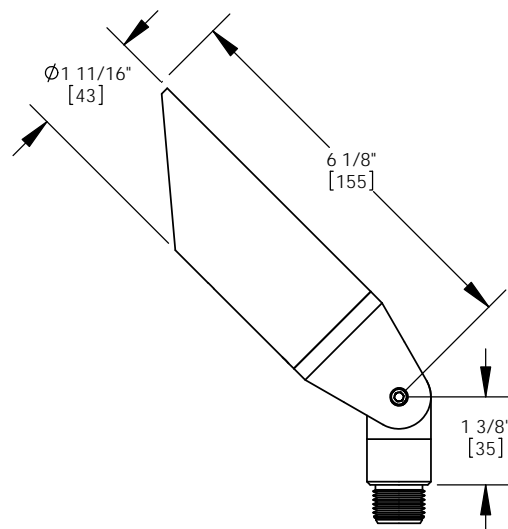
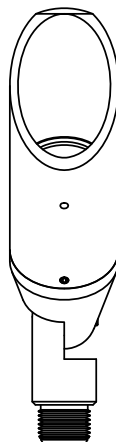
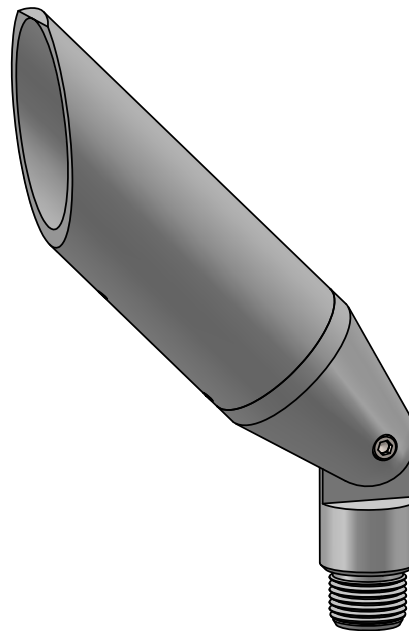
HL-319-BZ-12-LA-1-11

## RATING:

Wet/damp/dry location.



**MADE IN THE USA**



PROJECT:

APPROVED:

NOTE:

TYPE:

**H** HEVI LITE, INC.

9714 Variel Ave, Chatsworth, CA 91311  
Tel., (818) 341-8091 - Fax (818) 998-1986  
Web Site <http://www.hevilite.com>

CATALOG NUMBER:

**HL-319**