

SPECIFICATIONS

DESCRIPTION:

Compact square surface mount MR16 accent fixture with a machined mounting plate. Suitable for wet/damp/dry location installations.

MATERIAL:

Standard overall material is 6061 aluminum.

HL-330S - Machined Aluminum

FINISH:

AA - Anodized Satin Aluminum

AP - Powder Coat Aluminum

BK - Powder Coat Black

BZ - Powder Coat Bronze

WT - Powder Coat White

HALOGEN LAMPING OPTION:

Lamp Type - 12V halogen MR16 lamp, bi-pin GX5.3 base, 50W max, not included (standard).

LED OPTIONS:

Integral high output LED, warm white 85 CRI (90 available)

2700K or **3000K Standard** (**4000K**, **5000K**, & **6000K** available)

3LED - 3W LED - 180 lumens

8LED - 8W LED - 300 lumens

8LED-E - 8.4W LED - 565 lumens

OPTICS

3LED and 8LED:

SP - Spot, 12°

NF - Narrow Flood, 24°

FL - Flood, 36°

8LED-E:

SP - Spot 14°

NF - Narrow Flood, 25°

MF - Medium Flood, 30°

FL - Flood, 40°

VOLTAGE:

12 - 12 VAC output transformer required, not included.

MOUNTING:

Fixture is equipped with 4.75" square mounting plate and (2) mounting screws.

OPTIONS:

Lenses/Louvers/Color Filters

LA-1 - Hexcell Louver (Black)

LA-2 - Prismatic lens

LA-3 - Linear spread lens

LA-4 - Soft focus lens (diffused)

LA-5 - Moonlight lens

LA-6 - Blue lens

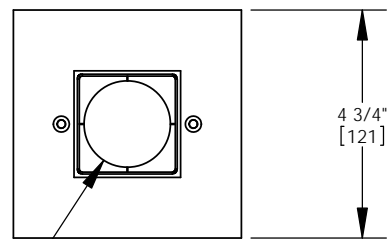
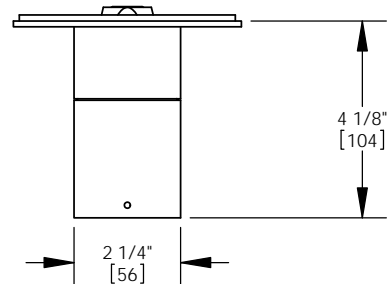
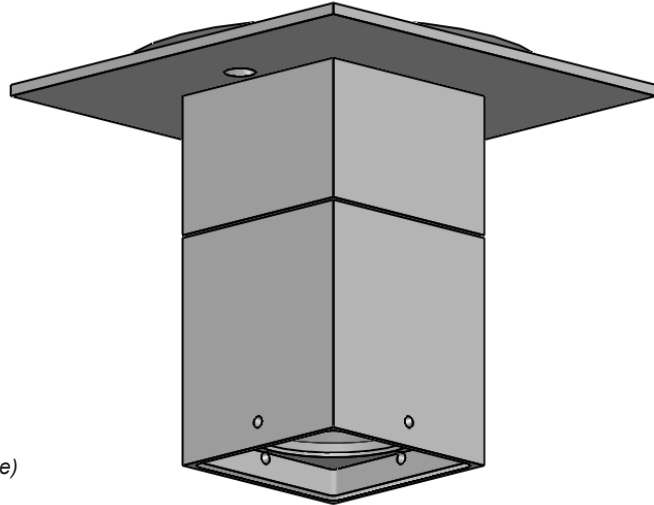
See fixture accessories for more information.

RATING:

Wet/damp/dry location.



MADE IN THE USA



R7/8" [23]

ORDER SPECIFICATION: _____ - _____ - _____ - _____ - _____
 Fixture Finish Lamping Voltage Options/Access.

PROJECT:

APPROVED:

NOTE:

TYPE:



HEVI LITE, INC.

9714 Variel Ave, Chatsworth, CA 91311
 Tel., (818) 341-8091 - Fax (818) 998-1986
 Web Site <http://www.hevilite.com>

CATALOG NUMBER:

HL-330S