

# SPECIFICATIONS

## DESCRIPTION:

Compact surface mount MR16 accent light.  
Suitable for wet/damp/dry location installations.

## MATERIAL:

Standard overall material is 6061 aluminum.

**HL-336** - Machined Aluminum (standard).

**HL-336-2b** - Machined Brass

**HL-336-1** - Machined Stainless Steel.

## FINISH:

**AA** - Anodized Satin Aluminum

**AP** - Powder Coat Aluminum

**BK** - Powder Coat Black

**BZ** - Powder Coat Bronze

**WT** - Powder Coat White

**N** - Natural Brass or Stainless

## HALOGEN LAMPING OPTION:

Lamp Type - 12V halogen MR16 lamp, bi-pin GX5.3 base,  
50W max, not included (standard).

## LED OPTIONS

Integral high output LED, warm white 85 CRI (90 available)

**2700K** or **3000K** Standard (**4000K**, **5000K**, & **6000K** available)

**3LED** - 3W LED - 180 lumens

**8LED** - 8W LED - 300 lumens

**8LED-E** - 8.4W LED - 565 lumens

## OPTICS

3LED and 8LED:

**SP** - Spot, 12°

**NF** - Narrow Flood, 24°

**FL** - Flood, 36°

8LED-E:

**SP** - Spot 14°

**NF** - Narrow Flood, 25°

**MF** - Medium Flood, 30°

**FL** - Flood, 40°

## VOLTAGE:

**12** - 12 VAC output transformer required, not included.

## MOUNTING:

Fixture is designed with a fixed 1/2" NPS mount.

## OPTIONS:

Glare shields

**GL-10** - Short Angled, aluminum

**GL-11** - Angled, aluminum

**GL-13** - Straight, aluminum

Lenses/Louvers/Color Filters

**LA-1** - Hexcell Louver (Black)

**LA-2** - Prismatic lens

**LA-3** - Linear spread lens

**LA-4** - Soft focus lens (diffused)

**LA-5** - Moonlight lens

**LA-6** - Blue lens

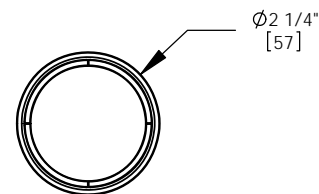
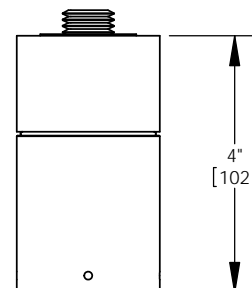
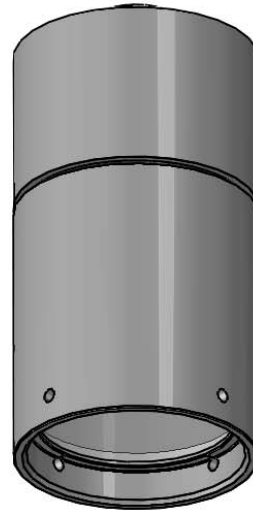
See fixture accessories for more information.

## RATING:

Wet/damp/dry location.



MADE IN THE USA



ORDER SPECIFICATION: \_\_\_\_\_ - \_\_\_\_\_ - \_\_\_\_\_ - \_\_\_\_\_ - \_\_\_\_\_  
Fixture Finish Lamping Voltage Options/Access.

PROJECT:

APPROVED:

NOTE:

TYPE:



**HEVI LITE, INC.**

9714 Variel Ave, Chatsworth, CA 91311  
Tel., (818) 341-8091 - Fax (818) 998-1986  
Web Site <http://www.hevilite.com>

CATALOG NUMBER:

**HL-336**