

SPECIFICATIONS

DESCRIPTION:

Adjustable MR16 wall mount fixture with integral 120/12V or 277/12V transformer canopy. Suitable for wet/damp/dry location installations.

MATERIAL:

Standard overall material is 6061 aluminum.
HL-384 - Machined Aluminum

FINISH:

AA - Anodized Satin Aluminum
AP - Powder Coat Aluminum
BK - Powder Coat Black
BZ - Powder Coat Bronze
WT - Powder Coat White

HALOGEN LAMPING OPTION:

Lamp Type - 12V halogen MR16 lamp, bi-pin GX5.3 base, 50W max, not included (standard).

LED OPTIONS:

Integral high output LED, warm white 85 CRI (90 available)
2700K or **3000K** Standard (**4000K**, **5000K**, & **6000K** available)

3LED - 3W LED - 180 lumens
8LED - 8W LED - 300 lumens
8LED-E - 8.4W LED - 565 lumens

OPTICS

3LED and 8LED:

SP - Spot, 12°
NF - Narrow Flood, 24°
FL - Flood, 36°

8LED-E:

SP - Spot 14°
NF - Narrow Flood, 25°
MF - Medium Flood, 30°
FL - Flood, 40°

VOLTAGE:

120 - 120/12 VAC transformer included.
277 - 277/12 VAC transformer included.

MOUNTING:

Fixture is equipped with a 4.75" mounting canopy and (2) mounting screws.

OPTIONS:

Glare shields

GL-10 - Short Angled, aluminum
GL-11 - Angled, aluminum
GL-13 - Straight, aluminum

Lenses/Louvers/Color Lenses

LA-1 - Hexcell Louver (Black)
LA-2 - Prismatic lens
LA-3 - Linear spread lens
LA-4 - Soft focus lens (diffused)
LA-5 - Moonlight lens
LA-6 - Blue lens

See fixture accessories for more information.

SAMPLE ORDER SPECIFICATION:

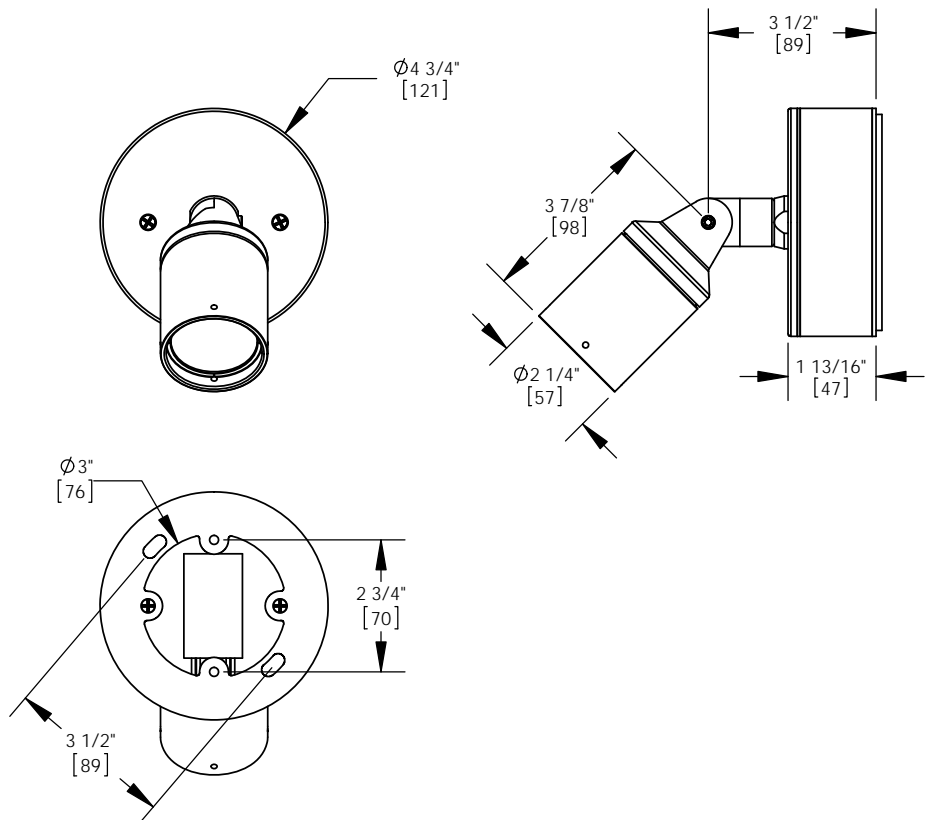
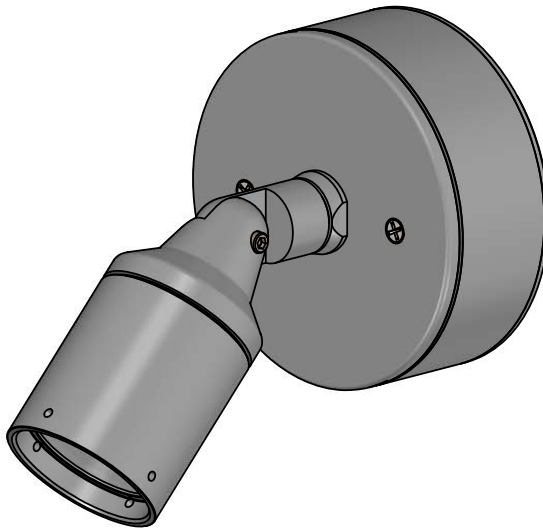
HL-384-AA-120-LA-5

RATING:

Wet/damp/dry location.



MADE IN THE USA



ORDER SPECIFICATION:

Fixture - Finish - Lamping - Voltage - Options/Access.

PROJECT:

APPROVED:

NOTE:

TYPE:



HEVI LITE, INC.

9714 Variel Ave, Chatsworth, CA 91311
 Tel., (818) 341-8091 - Fax (818) 998-1986
 Web Site <http://www.hevilite.com>

CATALOG NUMBER:

HL-384