

# SPECIFICATIONS

## DESCRIPTION:

Wall mount PAR38 accent fixture. Suitable for wet/damp/dry location installations.

## MATERIAL:

Standard overall material is 6061 aluminum.

**HL-378** - Machined Aluminum

## FINISH:

**AA** - Anodized Satin Aluminum

**AP** - Powder Coat Aluminum

**BK** - Powder Coat Black

**BZ** - Powder Coat Bronze

**WT** - Powder Coat White

## LAMPING:

Lamp Type - Incandescent/LED PAR38 lamp, medium base, 250W max, not included.

## VOLTAGE:

Line voltage fixture, 120-277V.

## MOUNTING:

Fixture is equipped with a 4.75" mounting plate and (2) mounting screws.

## OPTIONS:

Glare shields

**GL-38** - Angled, aluminum

**GL-39** - Straight, aluminum

Lenses/Louvers/Color Filters

**LA-1-38** - Hexcell Louver (Black)

**LA-2-38** - Prismatic lens

**LA-3-38** - Linear spread lens

**LA-4-38** - Soft focus lens (diffused)

**LA-5-38** - Moonlight lens

**LA-6-38** - Blue lens

See fixture accessories for more information.

## RATING:

Wet/damp/dry location.

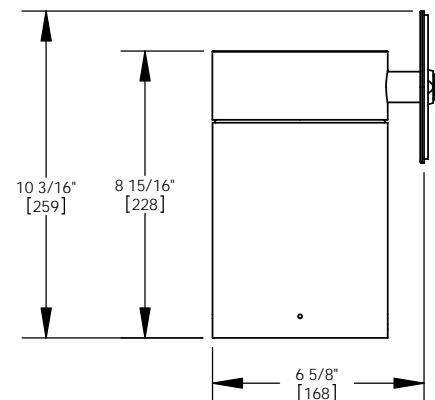
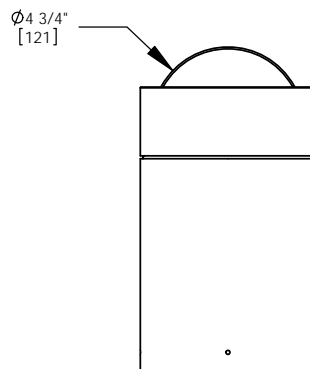
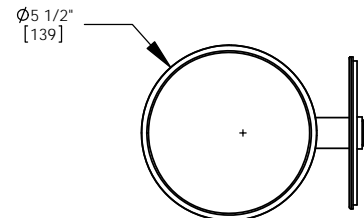
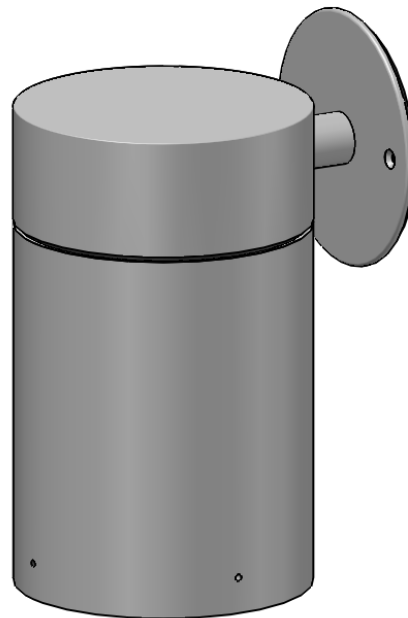
## SAMPLE ORDER SPECIFICATION:

HL-378-AA-GL-38-LA-2-38



Intertek

**MADE IN THE USA**



ORDER SPECIFICATION: \_\_\_\_\_ - \_\_\_\_\_ - \_\_\_\_\_ - \_\_\_\_\_ - \_\_\_\_\_  
 Fixture Finish Lamping Voltage Options/Access.

PROJECT:

APPROVED:

NOTE:

TYPE:



**HEVI LITE, INC.**

9714 Variel Ave, Chatsworth, CA 91311  
 Tel., (818) 341-8091 - Fax (818) 998-1986  
 Web Site <http://www.hevilite.com>

CATALOG NUMBER:

**HL-378**