

# SPECIFICATIONS

**DESCRIPTION:**

Dual MR16 path light with a "T" mount and 24" stem extension. Suitable for wet/damp/dry location installations.

**MATERIAL:**

Standard overall material is 6061 aluminum.  
**HL-617** - Machined Aluminum

**FINISH:**

- AA** - Anodized Satin Aluminum
- AP** - Powder Coat Aluminum
- BK** - Powder Coat Black
- BZ** - Powder Coat Bronze
- WT** - Powder Coat White

**HALOGEN LAMPING OPTION:**

Lamp Type - 12V halogen MR16 lamp, bi-pin GX5.3 base, 50W max, not included (standard).

**LED OPTIONS**

Integral high output LED, warm white 85 CRI (3000K CCT) standard, others available.

- 3LED** - 3W LED - 180 lumens
- 8LED** - 8W LED - 300 lumens
- 8LED-E** - 8.4W LED - 565 lumens

**OPTICS**

- 3LED and 8LED:
  - SP** - Spot, 12°
  - NF** - Narrow Flood, 24°
  - FL** - Flood, 36°
- 8LED-E:
  - SP** - Spot 14°
  - NF** - Narrow Flood, 25°
  - MF** - Medium Flood, 30°
  - FL** - Flood, 40°

**VOLTAGE:**

12 - 12 VAC output transformer required, not included.

**MOUNTING:**

Fixture is equipped with a 1/2-NPS stem extension.

**OPTIONS:**

Glare shields

- GL-10** - Short Angled, aluminum
- GL-11** - Angled, aluminum
- GL-13** - Straight, aluminum

Ground Mounts

- GM-1** - Composite spike
- GM-2** - Cast spike
- GM-3** - Stainless steel spike
- GM-4** - Stainless steel spike with wiring compartment
- GM-5** - Composite spike with wiring compartment
- GM-6** - Cast spike with wiring compartment
- GM-7** - Cork screw spike
- GM-8** - Cast brass in-grade J-Box
- GM-9** - Landscape Post

Lenses/Louvers/Color Filters

- LA-1** - Hexcell Louver (Black)
- LA-2** - Prismatic lens
- LA-3** - Linear spread lens
- LA-4** - Soft focus lens (diffused)
- LA-5** - Moonlight lens
- LA-6** - Blue lens

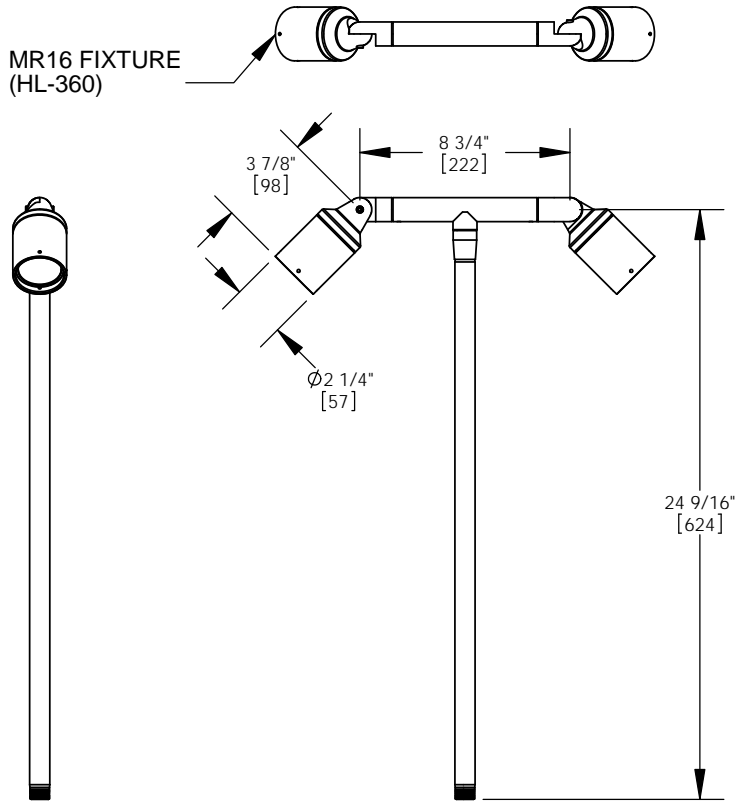
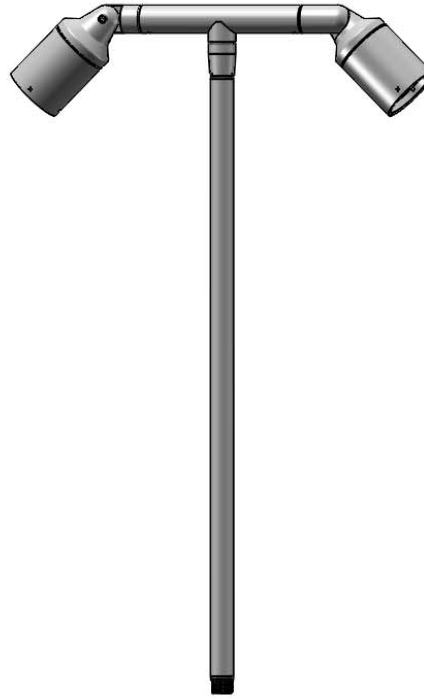
See fixture accessories for more information.

**SAMPLE ORDER SPECIFICATION:**

HL-617-AA-8LED-E-12 / GL-10 / LA-4

**RATING:**

Wet/damp/dry location.



**MADE IN THE USA**

**ORDER SPECIFICATION:** \_\_\_\_\_ - \_\_\_\_\_ - \_\_\_\_\_ - \_\_\_\_\_ - \_\_\_\_\_  
Fixture Finish Lamping Voltage Options/Access.

**PROJECT:** \_\_\_\_\_  
**APPROVED:** \_\_\_\_\_  
**NOTE:** \_\_\_\_\_  
**TYPE:** \_\_\_\_\_

**HEVI LITE, INC.**  
 9714 Variel Ave, Chatsworth, CA 91311  
 Tel., (818) 341-8091 - Fax (818) 998-1986  
 Web Site <http://www.hevilite.com>

**CATALOG NUMBER:**  
**HL-617**