

SPECIFICATIONS

DESCRIPTION:

Specification grade surface/tree fixture mount. Suitable for wet/damp/dry location installations.

MATERIAL:

Standard overall material is 6061 aluminum.

SM-1 - Machined Aluminum (Standard)

SM-1-2b - Machined Brass

FINISH:

AA - Anodized Satin Aluminum

AP - Powder Coat Aluminum

BK - Powder Coat Black

BZ - Powder Coat Bronze

WT - Powder Coat White

N - Natural, for Stainless Steel and Brass

VOLTAGE:

Wiring compartment is suitable for low voltage fixtures.

MOUNTING:

Designed to be surface/tree mounted and includes (1) 1/2" wiring hole, (1) 1/2-NPS mount, (2) mounting screws, and (1) machined lock nut.

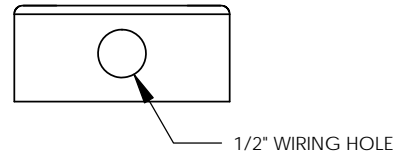
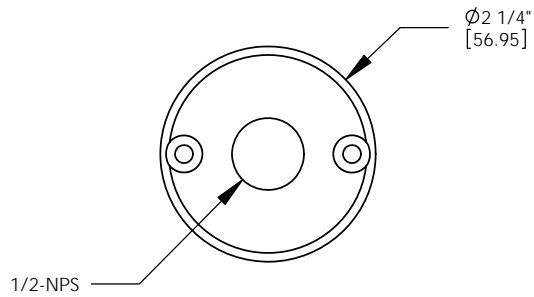
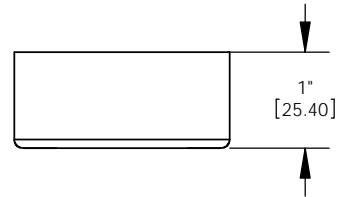
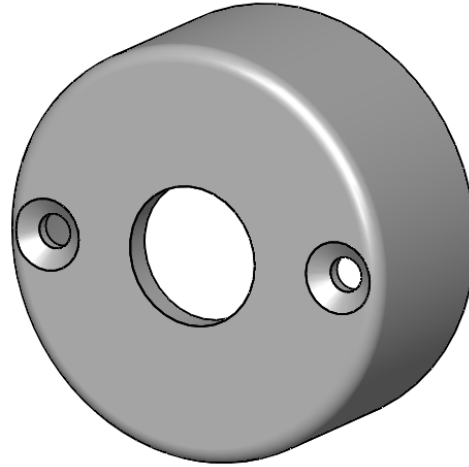
SAMPLE ORDER SPECIFICATION:

SM-2b-N

RATING:

Wet/damp/dry location.

MADE IN THE USA



ORDER SPECIFICATION: _____ - _____ - _____ - _____ - _____
Fixture Finish Lamping Voltage Options/Access.

PROJECT:
 APPROVED:
 NOTE:
 TYPE:

HEVI LITE, INC.
 9714 Variel Ave, Chatsworth, CA 91311
 Tel., (818) 341-8091 - Fax (818) 998-1986
 Web Site <http://www.hevilite.com>

CATALOG NUMBER:
SM-1