

# SPECIFICATIONS

**DESCRIPTION:**

Wall/surface mount J-Box for low voltage fixtures. Suitable for wet location installations.

**MATERIAL:**

Standard overall material is 6061 aluminum.  
**SM-4** - Machined Aluminum

**FINISH:**

- AP - Powder Coat Aluminum
- BK - Powder Coat Black
- BZ - Powder Coat Bronze
- WT - Powder Coat White

**VOLTAGE:**

Wiring - Wiring compartment suitable for low voltage connections with (1) .39" diameter cord inlet.

**MOUNTING:**

Mount is equipped with (1) 1/2-NPS fixture mount, 3.00"x1.75" mounting back plate and (2) mounting screws.

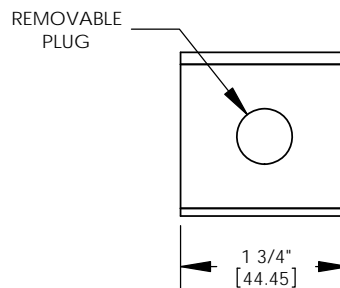
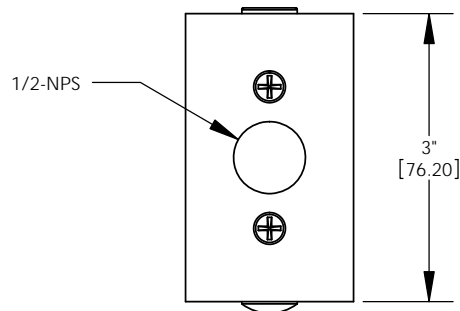
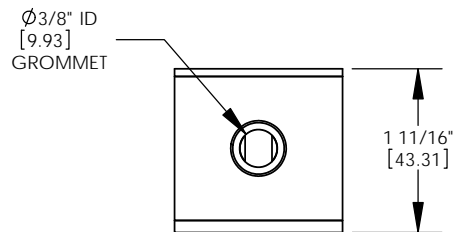
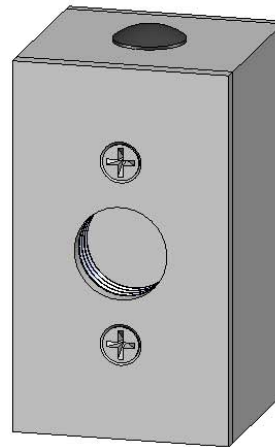
**SAMPLE ORDER SPECIFICATION:**

SM-4-BZ

**RATING:**

Wet/damp/dry location.

**MADE IN THE USA**



ORDER SPECIFICATION: \_\_\_\_\_ - \_\_\_\_\_ - \_\_\_\_\_ - \_\_\_\_\_ - \_\_\_\_\_  
Fixture Finish Lamping Voltage Options/Access.

PROJECT:

APPROVED:

NOTE:

TYPE:

**HEVI LITE, INC.**  
 9714 Variel Ave, Chatsworth, CA 91311  
 Tel., (818) 341-8091 - Fax (818) 998-1986  
 Web Site <http://www.hevilite.com>

CATALOG NUMBER:

**SM-4**