

SPECIFICATIONS

DESCRIPTION:

Surface mount canopy. Suitable for wet/damp/dry location installation.

MATERIAL:

Standard overall material is 6061 aluminum.

SM-5 - Machined aluminum

FINISH:

AA - Anodized Satin Aluminum

AP - Powder Coat Aluminum

BK - Powder Coat Black

BZ - Powder Coat Bronze

WT - Powder Coat White

MOUNTING:

Canopy is equipped with (1) 1/2-NPS mount for (1) fixture, 4.75" mounting back plate and (2) mounting screws.

SAMPLE ORDER SPECIFICATION:

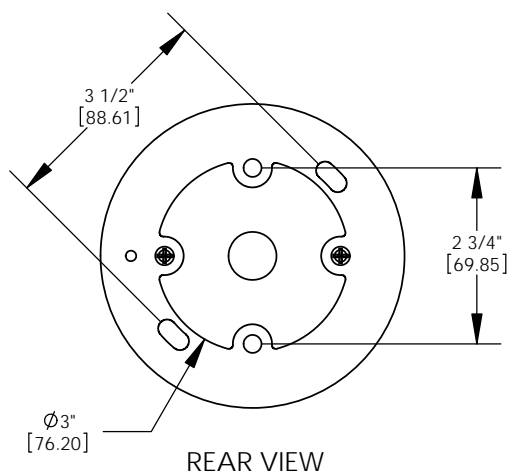
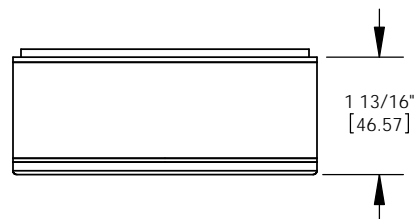
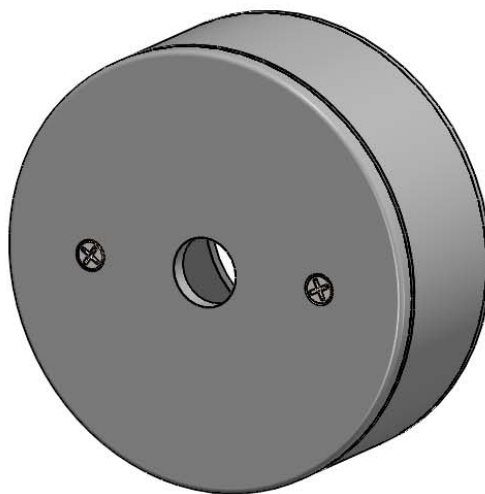
SM-5-AA

RATING:

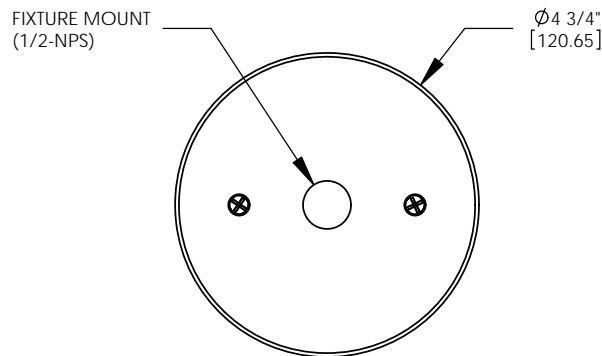
Wet/damp/dry location.



MADE IN THE USA



REAR VIEW



FRONT VIEW

ORDER SPECIFICATION:

Fixture - Finish - Lamping - Voltage - Options/Access.

PROJECT:

APPROVED:

NOTE:

TYPE:



HEVI LITE, INC.

9714 Variel Ave, Chatsworth, CA 91311
Tel., (818) 341-8091 - Fax (818) 998-1986
Web Site <http://www.hevilite.com>

CATALOG NUMBER:

SM-5