

# SPECIFICATIONS

## DESCRIPTION:

Dual surface mount canopy. Suitable for wet/damp/dry location installation.

## MATERIAL:

Standard overall material is 6061 aluminum.

**SM-6-2X** - Machined Aluminum

## FINISH:

**AA** - Anodized Satin Aluminum

**AP** - Powder Coat Aluminum

**BK** - Powder Coat Black

**BZ** - Powder Coat Bronze

**WT** - Powder Coat White

## MOUNTING:

Canopy is equipped with (2) 1/2-NPS mount for (2) fixtures, mounting tabs and (1) conduit hub.

## SAMPLE ORDER SPECIFICATION:

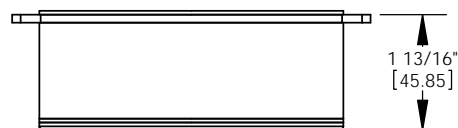
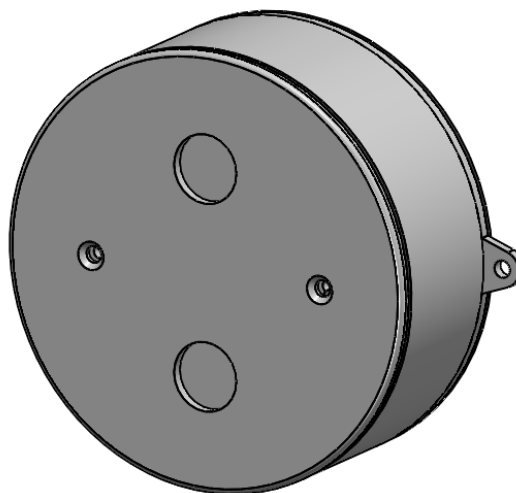
SM-6-2X-AA

## RATING:

Wet/damp/dry location.



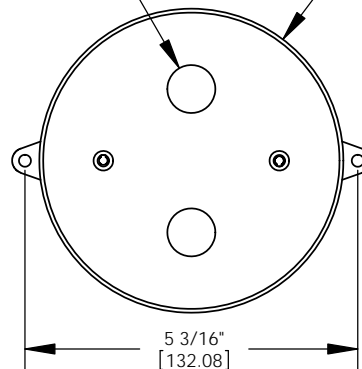
MADE IN THE USA



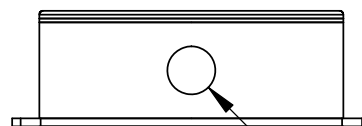
1 13/16"  
[45.85]

(2) FIXTURE MOUNTS  
(1/2-NPS)

Ø4 3/4"  
[120.65]



5 3/16"  
[132.08]



CONDUIT HUB  
(1/2-NPS)

ORDER SPECIFICATION: \_\_\_\_\_  
Fixture - Finish - Lamping - Voltage - Options/Access.

PROJECT:

APPROVED:

NOTE:

TYPE:



**HEVI LITE, INC.**

9714 Variel Ave, Chatsworth, CA 91311  
Tel., (818) 341-8091 - Fax (818) 998-1986  
Web Site <http://www.hevilite.com>

CATALOG NUMBER:

**SM-6-2X**