

SPECIFICATIONS

DESCRIPTION:

Surface mount canopy. Suitable for wet/damp/dry location installation.

MATERIAL:

Standard overall material is 6061 aluminum.

SM-6 - Machined Aluminum

FINISH:

AA - Anodized Satin Aluminum

AP - Powder Coat Aluminum

BK - Powder Coat Black

BZ - Powder Coat Bronze

WT - Powder Coat White

MOUNTING:

Canopy is equipped with (1) 1/2-NPS mount for (1) fixture, mounting tabs and (1) conduit hub.

SAMPLE ORDER SPECIFICATION:

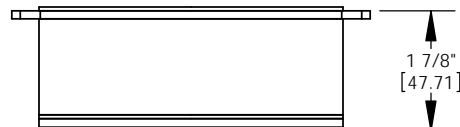
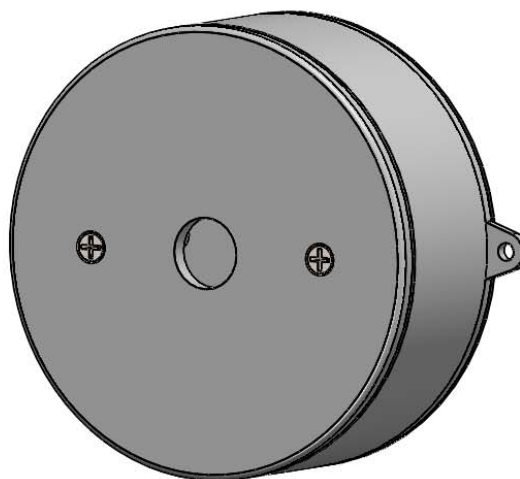
SM-6-AA

RATING:

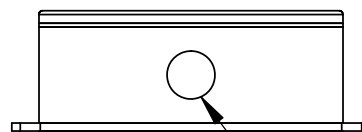
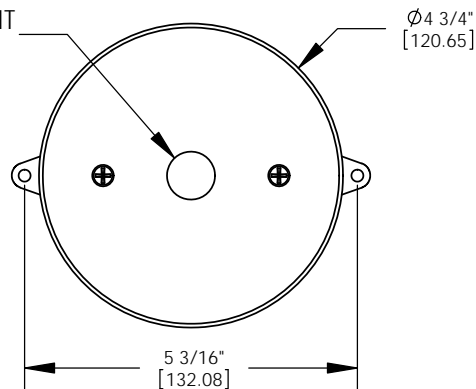
Wet/damp/dry location.



MADE IN THE USA



FIXTURE MOUNT
(1/2-NPS)



CONDUIT HUB
(1/2-NPS)

ORDER SPECIFICATION: _____ Fixture _____ Finish _____ Lamping _____ Voltage _____ Options/Access. _____

PROJECT:

APPROVED:

NOTE:

TYPE:



HEVI LITE, INC.

9714 Variel Ave, Chatsworth, CA 91311
Tel., (818) 341-8091 - Fax (818) 998-1986
Web Site <http://www.hevilite.com>

CATALOG NUMBER:

SM-6