

# SPECIFICATIONS

## DESCRIPTION:

Dual wall mount canopy. Suitable for wet/damp/dry location installation.

## MATERIAL:

Standard overall material is 6061 aluminum.

**WM-9-2X** - Machined aluminum

## FINISH:

**AA** - Anodized Satin Aluminum

**AP** - Powder Coat Aluminum

**BK** - Powder Coat Black

**BZ** - Powder Coat Bronze

**WT** - Powder Coat White

## VOLTAGE:

**120** - (1) 120/12 VAC 105W electronic transformers included.

## MOUNTING:

Canopy is equipped with (2) 1/2-NPS fixture mounts for (2) fixtures, 4.75" mounting back plate and (2) mounting screws.

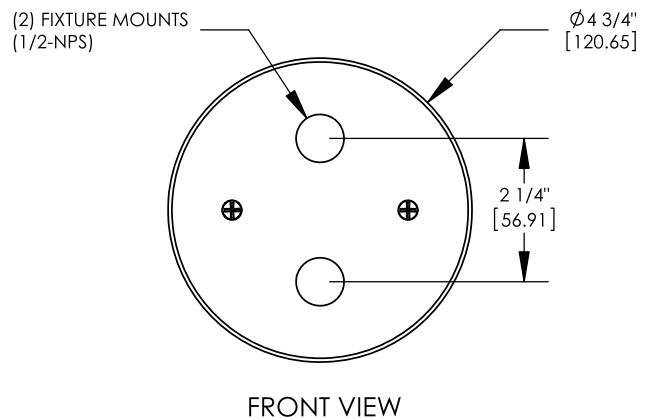
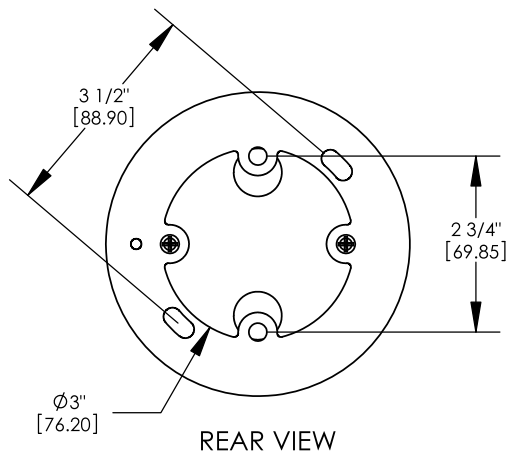
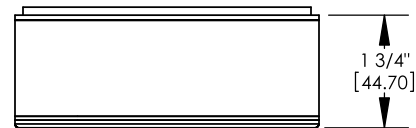
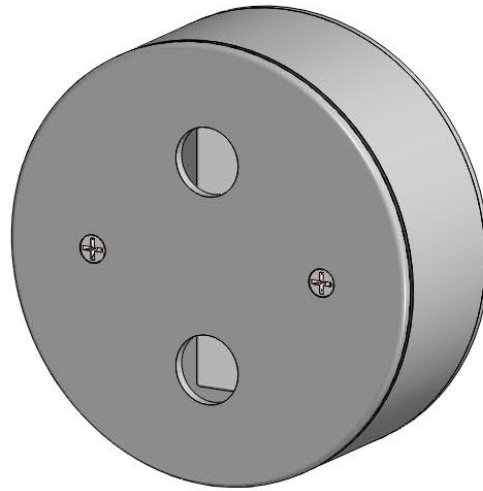
## SAMPLE ORDER SPECIFICATION:

WM-9-2X-BZ-120

## RATING:

Wet/damp/dry location.

**MADE IN THE USA**



ORDER SPECIFICATION: \_\_\_\_\_ - \_\_\_\_\_ - \_\_\_\_\_ - \_\_\_\_\_ - \_\_\_\_\_  
 Fixture Finish Lamping Voltage Options/Access.

PROJECT:

APPROVED:

NOTE:

TYPE:

**HEVI LITE, INC.**

9714 Variel Ave, Chatsworth, CA 91311  
 Tel., (818) 341-8091 - Fax (818) 998-1986  
 Web Site <http://www.hevilite.com>

CATALOG NUMBER:

**WM-9-2X**