

SPECIFICATIONS

DESCRIPTION:
PAR30 straight glare shield. Suitable for wet/damp/dry location installations.

MATERIAL:
Standard overall material is 6061 aluminum.
GL-31 - Machined Aluminum

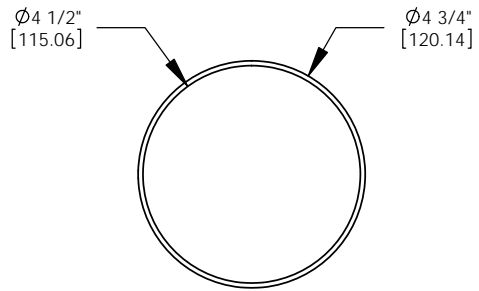
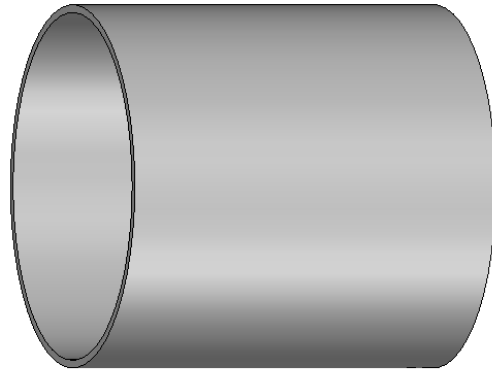
FINISH:
AA - Anodized Satin Aluminum
AP - Powder Coat Aluminum
BK - Powder Coat Black
BZ - Powder Coat Bronze
WT - Powder Coat White

MOUNTING:
Glare shield fits all PAR30 fixtures with 4.50" bezels.

SAMPLE ORDER SPECIFICATION:
GL-31-AA

RATING:
Wet/damp/dry location.

MADE IN THE USA



ORDER SPECIFICATION: _____ - _____ - _____ - _____ - _____
Fixture Finish Lamping Voltage Options/Access.

PROJECT:

APPROVED:

NOTE:

TYPE:

H HEVI LITE, INC.
 9714 Variel Ave, Chatsworth, CA 91311
 Tel., (818) 341-8091 - Fax (818) 998-1986
 Web Site <http://www.hevilite.com>

CATALOG NUMBER:

GL-31