

# SPECIFICATIONS

## DESCRIPTION:

PAR38 straight glare shield. Suitable for wet/damp/dry location installations.

## MATERIAL:

Standard overall material is 6061 aluminum.

**GL-39** - Machined Aluminum

## FINISH:

**AA** - Anodized Satin Aluminum

**AP** - Powder Coat Aluminum

**BK** - Powder Coat Black

**BZ** - Powder Coat Bronze

**WT** - Powder Coat White

## MOUNTING:

Glare shield fits all PAR38 fixtures with 5.50" bezels.

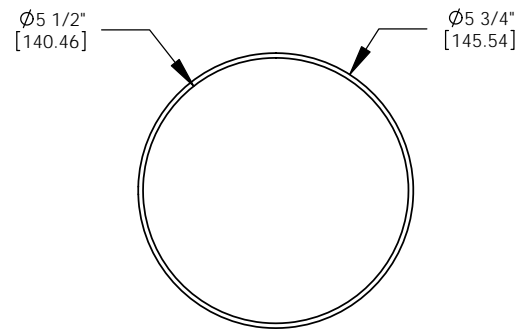
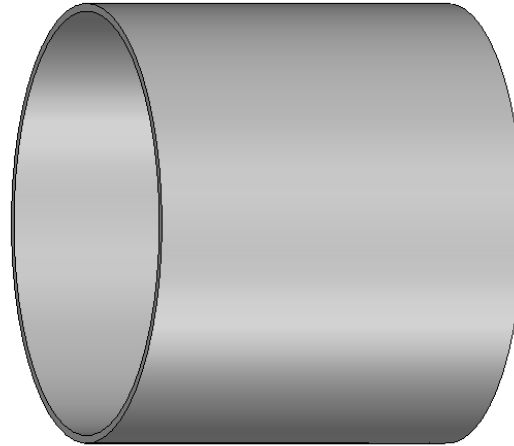
## SAMPLE ORDER SPECIFICATION:

GL-39-AA

## RATING:

Wet/damp/dry location.

**MADE IN THE USA**



ORDER SPECIFICATION: \_\_\_\_\_  
Fixture - Finish - Lamping - Voltage - Options/Access.

PROJECT:

APPROVED:

NOTE:

TYPE:



**HEVI LITE, INC.**

9714 Variel Ave, Chatsworth, CA 91311  
 Tel., (818) 341-8091 - Fax (818) 998-1986  
 Web Site <http://www.hevilite.com>

CATALOG NUMBER:

**GL-39**