

SPECIFICATIONS

DESCRIPTION:

Custom length machined aluminum stem extension for 1" OD stems. Extension stems are machine cut to length here at our factory to ensure exact specifications. Specify HL-EXT-XX where XX = overall length in inches (e.g., HL-EXT-12). Suitable for wet location installations.

MATERIAL:

Standard overall material is 6061 aluminum.
HL-EXT-XX - Machined Aluminum

FINISH:

AA - Anodized Satin Aluminum
AP - Powder Coat Aluminum
BK - Powder Coat Black
BZ - Powder Coat Bronze
WT - Powder Coat White

MOUNTING:

Fixture is designed with 1/2-NPS male and female ends.

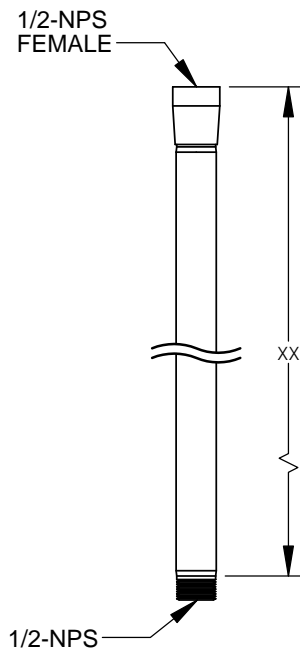
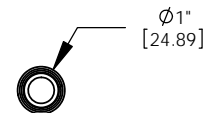
SAMPLE ORDER SPECIFICATION:

HL-EXT-36-AA

RATING:

Wet/ damp dry location.

MADE IN THE USA



ORDER SPECIFICATION: _____ - _____ - _____ - _____ - _____
 Fixture Finish Lamping Voltage Options/Access.

PROJECT:

APPROVED:

NOTE:

TYPE:



HEVI LITE, INC.

9714 Variel Ave, Chatsworth, CA 91311
 Tel., (818) 341-8091 - Fax (818) 998-1986
 Web Site <http://www.hevilite.com>

CATALOG NUMBER:

HL-EXT-XX