

SPECIFICATIONS

DESCRIPTION:

Dual machined round wall cover plate. Suitable for wet/damp/dry location installations.

MATERIAL:

Standard overall material is 6061 aluminum.
WM-1-2X - Machined Aluminum (Standard)
WM-1-2X-2b - Machined Brass

FINISH:

- AA** - Anodized Satin Aluminum
- AP** - Powder Coat Aluminum
- BK** - Powder Coat Black
- BZ** - Powder Coat Bronze
- WT** - Powder Coat White
- N** - Natural, for Stainless Steel and Brass

MOUNTING:

Cover is equipped with (2) 1/2-NPS mounts, (2) locknuts, gasket and (2) mounting screws.

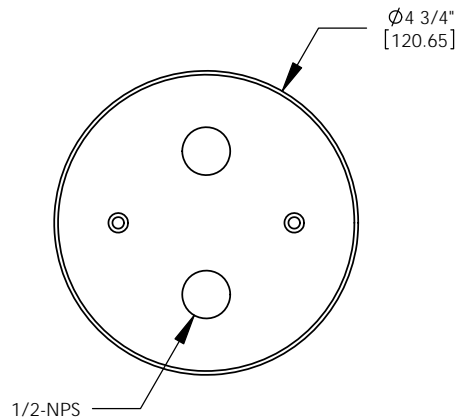
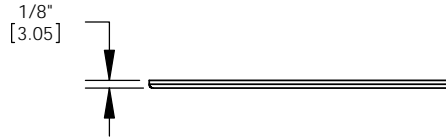
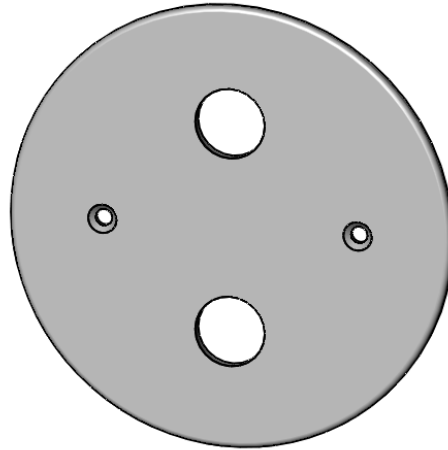
SAMPLE ORDER SPECIFICATION:

WM-1-2X-2b-N

RATING:

Wet/damp/dry location.

MADE IN THE USA



ORDER SPECIFICATION: _____ - _____ - _____ - _____ - _____
Fixture Finish Lamping Voltage Options/Access.

PROJECT: _____

APPROVED: _____

NOTE: _____

TYPE: _____

H HEVI LITE, INC.
 9714 Variel Ave, Chatsworth, CA 91311
 Tel., (818) 341-8091 - Fax (818) 998-1986
 Web Site <http://www.hevilite.com>

CATALOG NUMBER:
WM-1-2X