

# SPECIFICATIONS

## DESCRIPTION:

Dual cast round cover plate. Suitable for wet/damp/dry location installations.

## MATERIAL:

Standard overall material is cast aluminum.

**WM-6** - Cast Aluminum

## FINISH:

**AP** - Powder Coat Aluminum

**BK** - Powder Coat Black

**BZ** - Powder Coat Bronze

**WT** - Powder Coat White

## MOUNTING:

Cove is equipped with (2) 1/2-NPS mounts, (2) locknuts, gasket and (2) mounting screws.

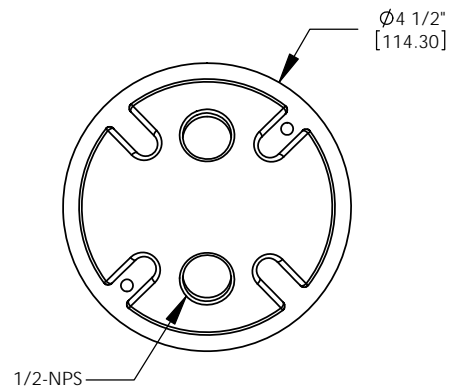
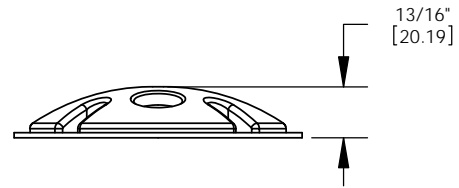
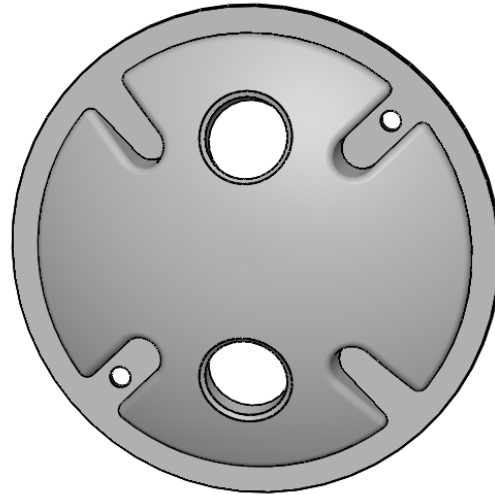
## SAMPLE ORDER SPECIFICATION:

WM-6-BZ

## RATING:

Wet/damp/dry location.

**MADE IN THE USA**



ORDER SPECIFICATION: \_\_\_\_\_ Fixture \_\_\_\_\_ Finish \_\_\_\_\_ Lamping \_\_\_\_\_ Voltage \_\_\_\_\_ Options/Access. \_\_\_\_\_

PROJECT:

APPROVED:

NOTE:

TYPE:



**HEVI LITE, INC.**

9714 Variel Ave, Chatsworth, CA 91311  
Tel., (818) 341-8091 - Fax (818) 998-1986  
Web Site <http://www.hevilite.com>

CATALOG NUMBER:

**WM-6**