

SPECIFICATIONS

DESCRIPTION:

Cast rectangular cover plate for standard 1-gang switch boxes. Suitable for wet/damp/dry location installations.

MATERIAL:

Standard overall material is cast aluminum.

WM-7 - Cast Aluminum

FINISH:

AP - Powder Coat Aluminum

BK - Powder Coat Black

BZ - Powder Coat Bronze

WT - Powder Coat White

MOUNTING:

Cover is equipped with a 1/2-NPS mount, locknut, gasket and (2) mounting screws.

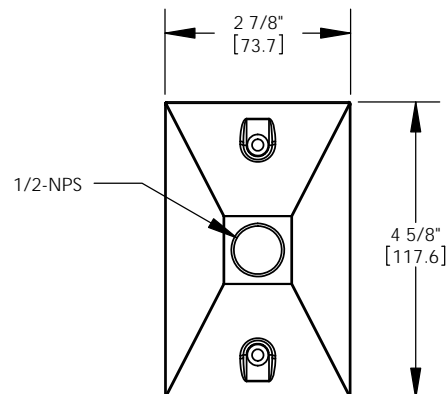
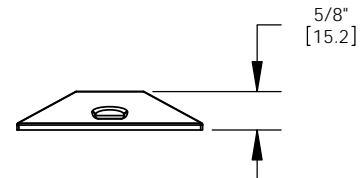
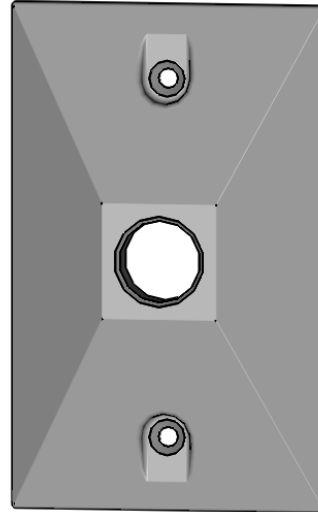
SAMPLE ORDER SPECIFICATION:

WM-7-BZ

RATING:

Wet/damp/dry location.

MADE IN THE USA



ORDER SPECIFICATION: _____ - _____ - _____ - _____ - _____
Fixture Finish Lamping Voltage Options/Access.

PROJECT:

APPROVED:

NOTE:

TYPE:



HEVI LITE, INC.

9714 Variel Ave, Chatsworth, CA 91311
 Tel., (818) 341-8091 - Fax (818) 998-1986
 Web Site <http://www.hevilite.com>

CATALOG NUMBER:

WM-7