

SPECIFICATIONS

DESCRIPTION:

Magnetic class 2 transformers in Nema 3R enclosures for use with low voltage lighting fixtures and dimmable LEDs. Fully compatible with low voltage dimmers, in contrast to voltage mode drivers that balance the voltage in the system and prevent the dimmer from working. For Commercial or residential use. Suitable for wet location installations.

MODELS AVAILABLE:

- HLT-20M - 20W, Size A
- HLT-40M - 40W, Size A
- HLT-50M - 50W, Size A
- HLT-60M - 60W, Size B
- HLT-100M - 100w, Size B. 277v = 9.8"x3"x3".

VOLTAGE:

All transformers include auto-reset breakers, one on the input and one on the output
120 - 120 VAC input/12 VAC output
277 - 277 VAC input/12 VAC output

MOUNTING:

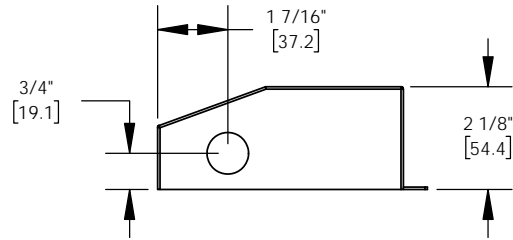
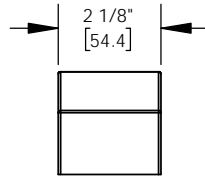
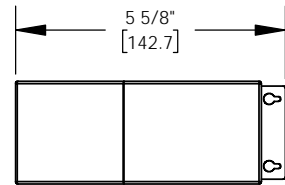
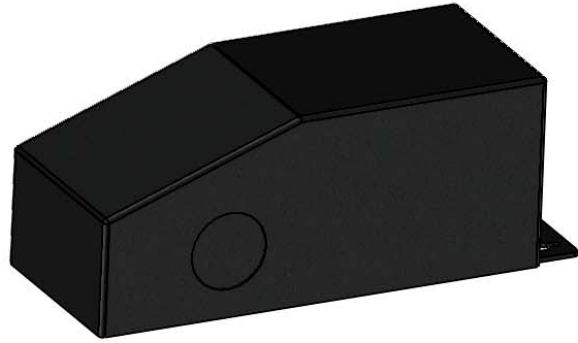
Nema 3R rated metal housing equipped with mounting holes and (2) 1/2" knock-outs.

SAMPLE ORDER SPECIFICATION:

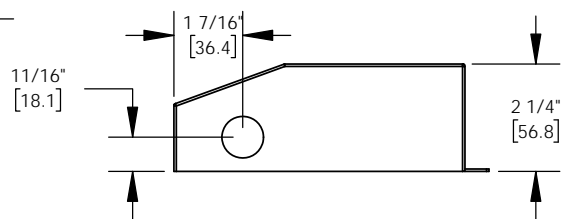
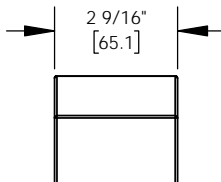
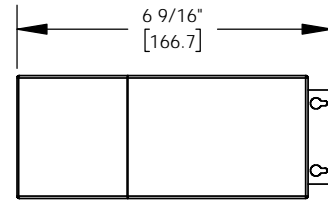
HLT-40M-120

RATING:

ETL listed and certified to CSA standard.



SIZE A



SIZE B

ORDER SPECIFICATION: _____ - _____ - _____ - _____ - _____
Fixture Finish Lamping Voltage Options/Access.

PROJECT: _____
 APPROVED: _____
 NOTE: _____
 TYPE: _____

HEVI LITE, INC.
 9714 Variel Ave, Chatsworth, CA 91311
 Tel., (818) 341-8091 - Fax (818) 998-1986
 Web Site <http://www.hevilite.com>

CATALOG NUMBER:
HLT-XXM