

# SPECIFICATIONS

**DESCRIPTION:**

MR16 hanging pendant fixture. Suitable for wet/damp/dry location installation.

**MATERIAL:**

Standard overall material is 6061 aluminum.  
**C01500** - Machined Aluminum

**FINISH:**

- AA** - Anodized Satin Aluminum
- AP** - Powder Coat Aluminum
- BK** - Powder Coat Black
- BZ** - Powder Coat Bronze
- WT** - Powder Coat White

**HALOGEN LAMPING OPTION:**

Lamp Type - 12V halogen MR16 lamp, bi-pin GX5.3 base, 50W max, not included (standard).

**LED OPTIONS**

Integral high output LED, warm white 85 CRI (3000K CCT) standard, others available.

- 3LED** - 3W LED - 180 lumens
- 8LED** - 8W LED - 300 lumens
- 8LED-E** - 8.4W LED - 565 lumens

**OPTICS**

- 3LED and 8LED:
  - SP** - Spot, 12°
  - NF** - Narrow Flood, 24°
  - FL** - Flood, 36°
- 8LED-E:
  - SP** - Spot 14°
  - NF** - Narrow Flood, 25°
  - MF** - Medium Flood, 30°
  - FL** - Flood, 40°

**VOLTAGE:**

- 12** -12 VAC output transformer required, not included.
- 120** -120V, for GU10 lamp only.

**MOUNTING:**

Fixture is equipped with a cord to hang from a tree/surface. 15ft SJO cord, included.

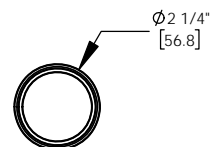
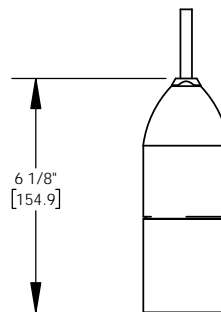
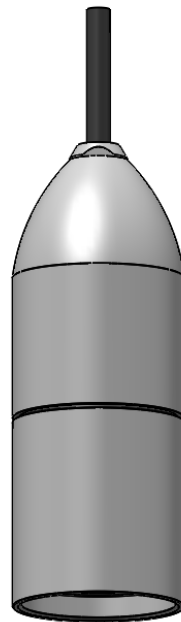
**OPTIONS:**

- Lenses/ Color Filters
    - LA-2** - Prismatic lens
    - LA-3** - Linear spread lens
    - LA-4** - Soft focus lens (diffused)
    - LA-5** - Moonlight lens
    - LA-6** - Blue lens
  - Louvers
    - LA-1** - Hexcell Louver (Black)
- See fixture accessories for more informaton.

**RATING:**

Wet/damp/dry location.

**MADE IN THE USA**



PROJECT:
APPROVED:
NOTE:
TYPE:

**H HEVI LITE, INC.**  
 9714 Variel Ave, Chatsworth, CA 91311  
 Tel., (818) 341-8091 - Fax (818) 998-1986  
 Web Site <http://www.hevilite.com>

CUSTOM NUMBER:  
**C01500**