

SPECIFICATIONS

DESCRIPTION:

Flood light angled glare shield. Suitable for wet/damp/dry location installations.

MATERIAL:

Standard overall material is 6061 aluminum.
GL-91 - Machined Aluminum

FINISH:

- AA - Anodized Satin Aluminum
- AP - Powder Coat Aluminum
- BK - Powder Coat Black
- BZ - Powder Coat Bronze
- WT - Powder Coat White

MOUNTING:

Glare shield fits HL-391 and HL-400 fixtures.

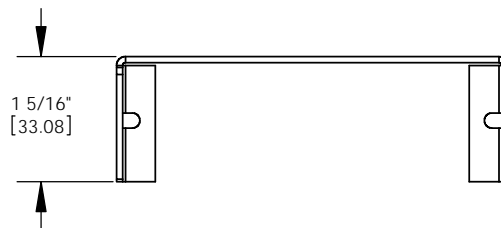
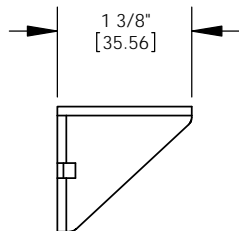
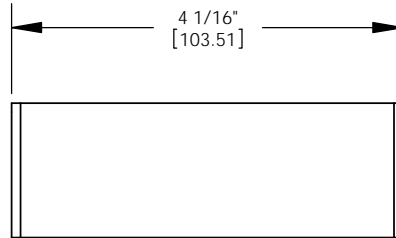
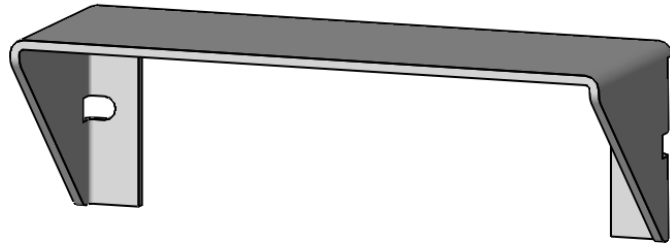
SAMPLE ORDER SPECIFICATION:

GL-91-BZ

RATING:

Wet/damp/dry location.

MADE IN THE USA



ORDER SPECIFICATION: _____
Fixture - Finish - Lamping - Voltage - Options/Access.

PROJECT:

APPROVED:

NOTE:

TYPE:

H HEVI LITE, INC.
 9714 Variel Ave, Chatsworth, CA 91311
 Tel., (818) 341-8091 - Fax (818) 998-1986
 Web Site <http://www.hevilite.com>

CATALOG NUMBER:

GL-91