

# SPECIFICATIONS

**DESCRIPTION:**

Flood light angled glare shield. Suitable for wet/damp/dry location installations.

**MATERIAL:**

Standard overall material is 6061 aluminum.  
**GL-92** - Machined Aluminum

**FINISH:**

- AA - Anodized Satin Aluminum
- AP - Powder Coat Aluminum
- BK - Powder Coat Black
- BZ - Powder Coat Bronze
- WT - Powder Coat White

**MOUNTING:**

Glare shield fits HL-392 and HL-904 fixtures.

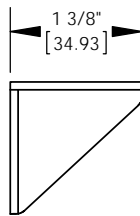
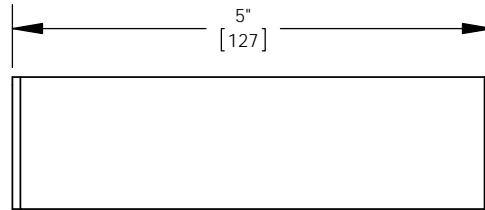
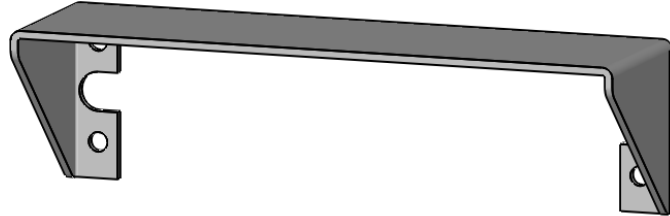
**SAMPLE ORDER SPECIFICATION:**

GL-92-AA

**RATING:**

Wet/damp/dry location.

**MADE IN THE USA**



ORDER SPECIFICATION: \_\_\_\_\_  
Fixture                      Finish                      Lamping                      Voltage                      Options/Access.

PROJECT: \_\_\_\_\_

APPROVED: \_\_\_\_\_

NOTE: \_\_\_\_\_

TYPE: \_\_\_\_\_

**H HEVI LITE, INC.**  
 9714 Variel Ave, Chatsworth, CA 91311  
 Tel., (818) 341-8091 - Fax (818) 998-1986  
 Web Site <http://www.hevilite.com>

CATALOG NUMBER:

**GL-92**