

# SPECIFICATIONS

**DESCRIPTION:**

Compact brass recessed LED in-grade up light, with adjustable light source. Suitable for wet/damp location installations.

**MATERIAL:**

Standard overall material is brass.  
**HL-812-LED** - Machined Brass

**FINISH:**

**N** - Natural Brass

**LED OPTIONS:**

Integral high output LED, warm white (3000K CCT) standard, others available.

- 1LED** - 1W LED
- 3LED** - 3W LED

**Optics**

- SP** - Spot, 12°
- NF** - Narrow Flood, 24°
- FL** - Flood, 36°

**VOLTAGE:**

**12** - 12 VAC output transformer required, not included.

**MOUNTING:**

Suitable for installation into concrete, masonry, or any other non-combustible materials.

**OPTIONS:**

Lenses/Louvers/Color Filters

- LA-1** - Hexcell Louver (Black)
- LA-2** - Prismatic lens
- LA-3** - Linear spread lens
- LA-4** - Soft focus lens (diffused)
- LA-5** - Moonlight lens
- LA-6** - Blue lens

Pour Housing - Aluminum tube

**HL-12PH** - Aluminum flange

See fixture accessories for more information.

**SAMPLE ORDER SPECIFICATION:**

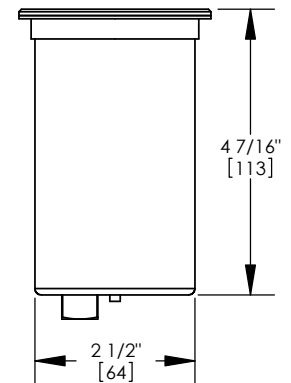
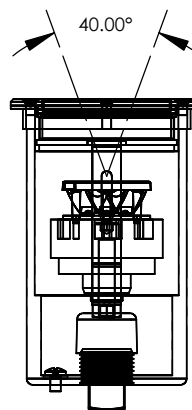
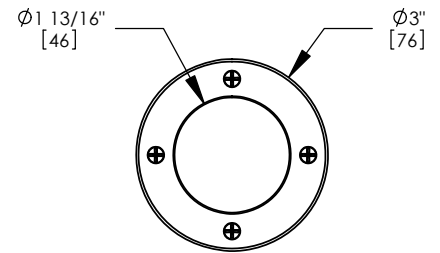
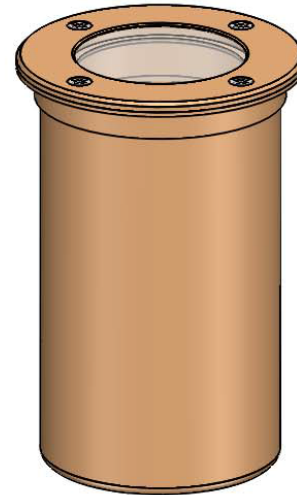
HL-812-3LED-N-NF-12-LA-4-HL-12PH

**RATING:**

Wet/damp location - IP67



**MADE IN THE USA**



**ORDER SPECIFICATION:** \_\_\_\_\_ - \_\_\_\_\_ - \_\_\_\_\_ - \_\_\_\_\_ - \_\_\_\_\_  
Fixture Finish Lamping Voltage Options/Access.

**PROJECT:** \_\_\_\_\_  
**APPROVED:** \_\_\_\_\_  
**NOTE:** \_\_\_\_\_  
**TYPE:** \_\_\_\_\_

**HEVI LITE, INC.**  
 9714 Variel Ave, Chatsworth, CA 91311  
 Tel., (818) 341-8091 - Fax (818) 998-1986  
 Web Site <http://www.hevilite.com>

CATALOG NUMBER:  
**HL-812-LED**