

SPECIFICATIONS

DESCRIPTION:

Straight 3" glare shield. Suitable for wet/damp/dry location installations.

MATERIAL:

Standard overall material is 6061 aluminum.
GL-921 - Machined Aluminum

FINISH:

- AA** - Anodized Satin Aluminum
- AP** - Powder Coat Aluminum
- BK** - Powder Coat Black
- BZ** - Powder Coat Bronze
- WT** - Powder Coat White

MOUNTING:

Glare shield fits HL-920 and all fixtures with 3.00" bezels.

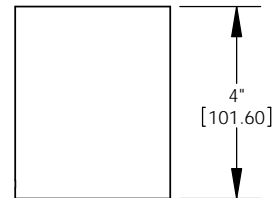
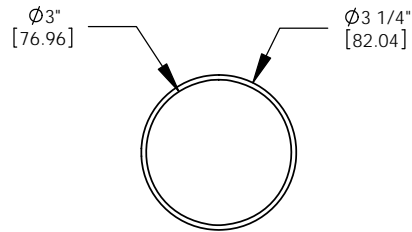
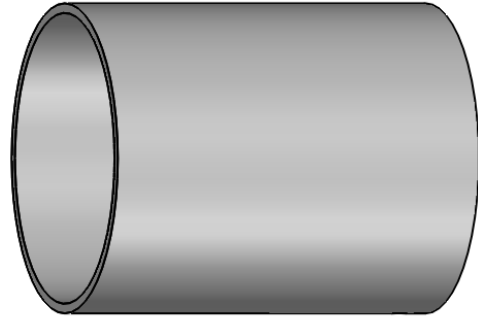
SAMPLE ORDER SPECIFICATION:

GL-921-AA

RATING:

Wet/damp/dry location.

MADE IN THE USA



ORDER SPECIFICATION: _____ - _____ - _____ - _____ - _____
Fixture Finish Lamping Voltage Options/Access.

PROJECT: _____

APPROVED: _____

NOTE: _____

TYPE: _____

H HEVI LITE, INC.
 9714 Variel Ave, Chatsworth, CA 91311
 Tel., (818) 341-8091 - Fax (818) 998-1986
 Web Site <http://www.hevilite.com>

CATALOG NUMBER:

GL-921