

SPECIFICATIONS

DESCRIPTION:

Compact MR16 adjustable square accent fixture. Suitable for wet/damp/dry location installations.

MATERIAL:

Standard overall material is 6061 aluminum.

HL-386s - Machined Aluminum (Standard)

HL-386s-1 - Machined Stainless Steel

HL-386s-2b - Machined Brass

FINISH:

AA - Anodized Satin Aluminum

AP - Powder Coat Aluminum

BK - Powder Coat Black

BZ - Powder Coat Bronze

WT - Powder Coat White

N - Natural, for Stainless Steel and Brass

LAMPING:

Lamp Type - 120V halogen/LED MR16 lamp, GU10 base, 50W max, not included.

VOLTAGE:

Line voltage fixture, 120V.

MOUNTING:

Fixture is designed with a 1/2-NPS adjustable mounting stem.

OPTIONS:

Lenses/Louvers/Color Filters

LA-1 - Hexcell Louver (Black)

LA-2 - Prismatic lens

LA-3 - Linear spread lens

LA-4 - Soft focus lens (diffused)

LA-5 - Moonlight lens

LA-6 - Blue lens

See fixture accessories for more information.

SAMPLE ORDER SPECIFICATION:

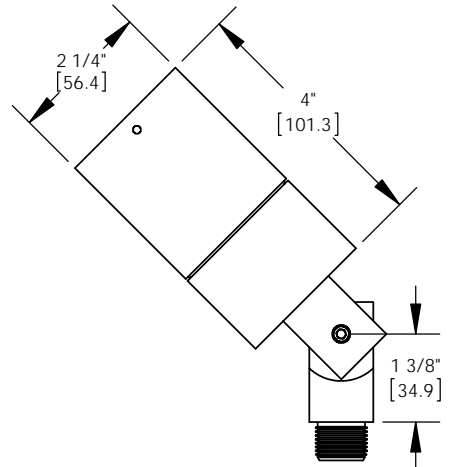
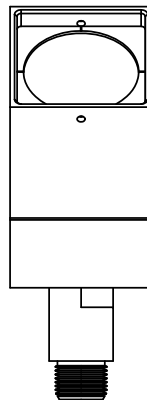
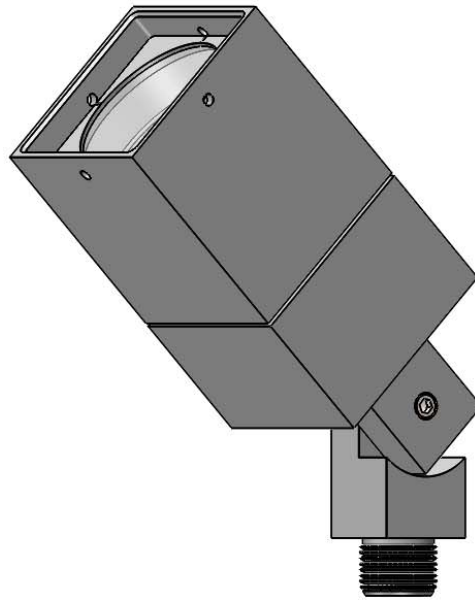
HL-386s-2b-N-GL-11-LA-1

RATING:

Wet/damp/dry location.



MADE IN THE USA



ORDER SPECIFICATION: _____ - _____ - _____ - _____ - _____
 Fixture Finish Lamping Voltage Options/Access.

PROJECT:

APPROVED:

NOTE:

TYPE:



HEVI LITE, INC.

9714 Variel Ave, Chatsworth, CA 91311
 Tel., (818) 341-8091 - Fax (818) 998-1986
 Web Site <http://www.hevilite.com>

CATALOG NUMBER:

HL-386S