

SPECIFICATIONS

DESCRIPTION:

LED architectural wall sconce. Suitable for wet/damp/dry location installations.

MATERIAL:

Machined from 6061 T6 aluminum.

FINISH:

- AA** - Anodized Satin Aluminum
- AP** - Powder Coat Aluminum
- BK** - Powder Coat Black
- BZ** - Powder Coat Bronze
- WT** - Powder Coat White

LED OPTIONS:

Integral high output LED, warm white (3000K CCT) standard, others available.

4LED - 4.3 W LED

Optics

- White Opal Lens- 275 Lumens
- Clear Lens - 450 Lumens

VOLTAGE:

12 - 12 VAC output transformer required, not included.

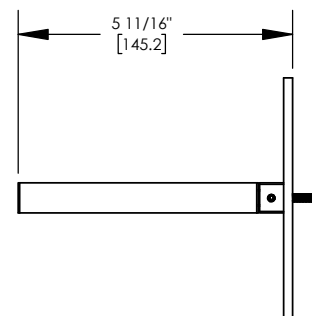
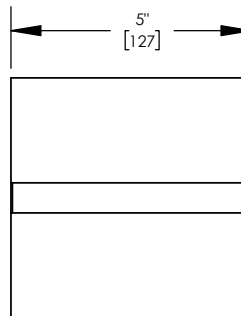
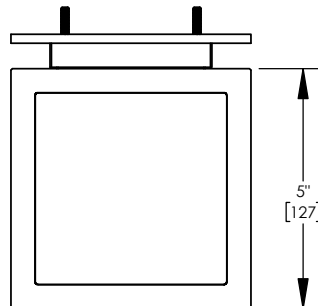
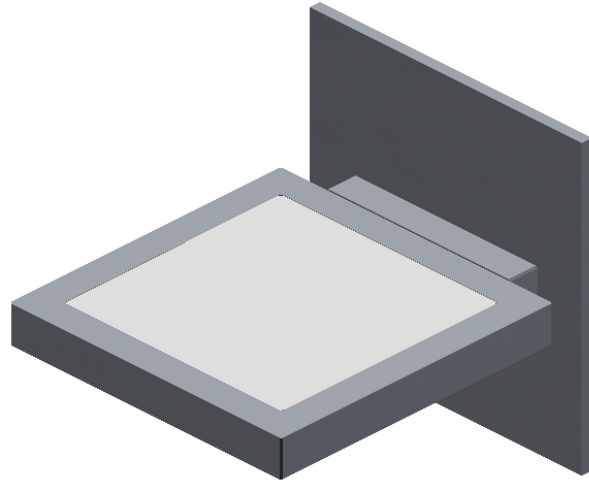
MOUNTING:

Mounting plate mounts to standard 4" Octagonal or Square junction box with drywall ring.

RATING:

Wet/damp/dry location.

MADE IN THE USA



ORDER SPECIFICATION: _____ - _____ - _____ - _____ - _____
 Fixture Finish Lamping Voltage Options/Access.

PROJECT:

APPROVED:

NOTE:

TYPE:

HEVI LITE, INC.

9714 Variel Ave, Chatsworth, CA 91311
 Tel., (818) 341-8091 - Fax (818) 998-1986
 Web Site <http://www.hevilite.com>

CATALOG NUMBER:

HL-970