

# SPECIFICATIONS

**DESCRIPTION:**

Compact LED step light. Suitable for wet/damp/dry location installations.

**MATERIAL:**

Standard overall material is 6061 aluminum.  
**C01226-350** - Machined Aluminum (Standard)  
**C01226-1-350** - Machined Stainless Steel Bezel

**FINISH:**

- AA - Anodized Satin Aluminum
- AP - Powder Coat Aluminum
- BK - Powder Coat Black
- BZ - Powder Coat Bronze
- WT - Powder Coat White
- N - Natural Stainless Steel

**LED OPTIONS:**

Integral 1W LED, warm white (3000K CCT) standard, others available. Standard diffused lens.

**CURRENT:**

Remote 350mA, 1.5W constant current driver required, not included. See options below.

**MOUNTING:**

Fixture is designed to be mounted in 1-1/2" square hole.

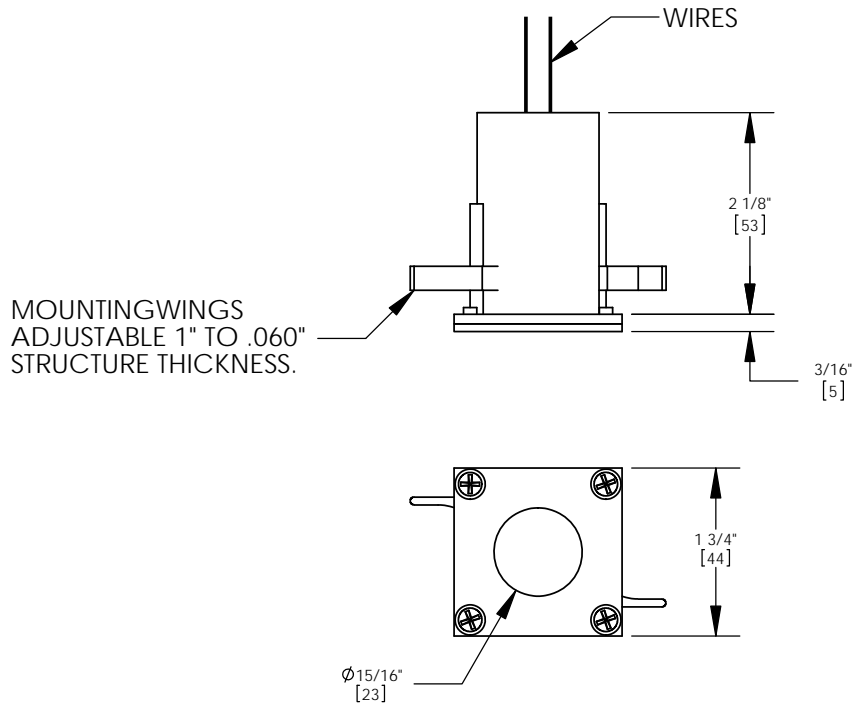
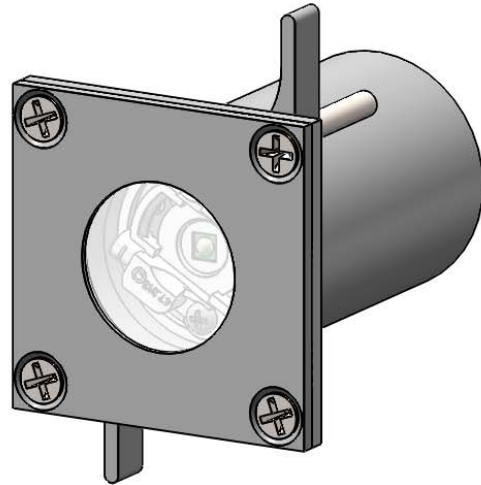
**OPTIONS:**

LED Constant Current Drivers  
**HLD-3-350-12** - 4W 350mA 12 VAC driver  
**HLD-3-350-U** - 3W 350mA 120-277 VAC driver  
 See fixture accessories for more information.

**RATING:**

Wet/damp/dry location.

**MADE IN THE USA**



PROJECT:	<b>H HEVI LITE, INC.</b> 9714 Variel Ave, Chatsworth, CA 91311 Tel., (818) 341-8091 - Fax (818) 998-1986 Web Site <a href="http://www.hevilite.com">http://www.hevilite.com</a>
APPROVED:	
NOTE:	
TYPE:	

CUSTOM NUMBER:  
**C01226-350**