

SPECIFICATIONS

DESCRIPTION:

Slim LED pathway bollard. Suitable for wet/damp/dry location installations.

MATERIAL:

Standard overall material is 6061 aluminum.

FINISH:

- AA - Anodized Satin Aluminum
- AP - Powder Coat Aluminum
- BK - Powder Coat Black
- BZ - Powder Coat Bronze
- WT - Powder Coat White

LAMPING:

LED Lamps
 Lamp Type - High output LED, warm white (3000K CCT) standard, others available.
1LED - 1W LED
3LED - 3W LED

VOLTAGE:

12 - 12 VAC output transformer required, not included.

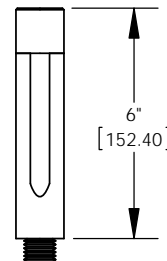
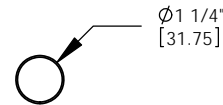
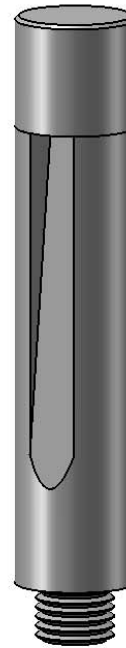
MOUNTING:

- 1/2" nipple mounts to standard Hevi Lite ground mounts.
- GM-1 Composit mounting spike
 - GM-2 Cast mounting spike.
 - GM-3 Stainless steel triple prong spike.
 - GM-4 Stainless steel triple prong spike w/j-box
 - GM-5 ABS mounting spike w/ wiring compartment
 - GM-6 Cast mounting spike with wiring box
 - GM-7 Cork screw style mounting spike
 - GM-8 Cast in grade j-box
 - GM-9 Landscape power post

RATING:

Wet/damp/dry location.

MADE IN THE USA



| |
|-----------|
| PROJECT: |
| APPROVED: |
| NOTE: |
| TYPE: |

H HEVI LITE, INC.
 9714 Variel Ave, Chatsworth, CA 91311
 Tel., (818) 341-8091 - Fax (818) 998-1986
 Web Site <http://www.hevilite.com>

CUSTOM NUMBER:
C02158