

SPECIFICATIONS

DESCRIPTION:

LED above grade up light with internal aiming adjustment and integral driver. Suitable for wet/damp/dry location installations.

MATERIAL:

Standard overall material is 6061 aluminum

FINISH:

- AA - Anodized Satin Aluminum
- AP - Powder Coat Aluminum
- BK - Powder Coat Black
- BZ - Powder Coat Bronze
- WT - Powder Coat White

LED OPTIONS:

Integral high output Xicato LED module.

LED Output

L40 - 18.9W, 700mA, 1300 Lumens

L50 - 29.3W, 1050mA, 2400 Lumen

Color Temperature CCT

27 - 2700K CCT

30 - 3000K CCT

35 - 3500K CCT

40 - 4000K CCT

Reflector, Field Replaceable

NF - Narrow Flood, 20°

FL - Flood, 40°

WFL - Wide Flood, 60°

VOLTAGE:

Leading edge/trailing edge dimmable constant current LED Driver included. Dimmable only in 120V.

120-277 - 120-277V LED driver

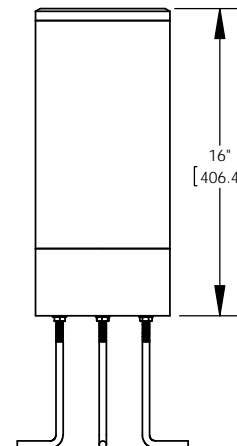
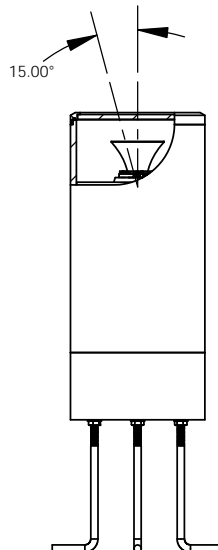
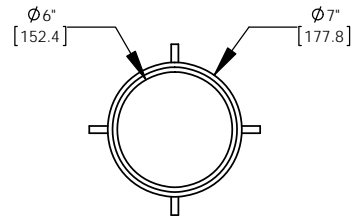
MOUNTING:

Fixture is equipped with anchor bolts for concrete installations.

RATING:

Wet/damp/dry locations.

MADE IN THE USA



| |
|-----------|
| PROJECT: |
| APPROVED: |
| NOTE: |
| TYPE: |

H HEVI LITE, INC.
 9714 Variel Ave, Chatsworth, CA 91311
 Tel., (818) 341-8091 - Fax (818) 998-1986
 Web Site <http://www.hevilite.com>

CUSTOM NUMBER:
C01480-LED