

SPECIFICATIONS

DESCRIPTION:

3R rated rain tight enclosure with (1) LED driver.

MATERIAL:

HL-XLD - Aluminum Case

FINISH:

Black Powdercoat - Aluminum

COMPATIBLE FIXTURES

HL-300, HL-360-CC, HL-920, and HL-925

DRIVER: Constant current LED driver.

L30 - 350mA driver

L35 - 500mA driver

L40 - 700mA driver

L50 - 1050mA driver

40W

50W

75W

96W

150W

200W

240W

VOLTAGE:

120-277 - 120-277 VAC LED integral driver.

DIMMING:

0-10 - 0-10V dimming

PD - Phase dimming (40W and 96W only, 120V)

PWM - Pulse Width Modulation

DS - Designer dimming.

MOUNTING:

Enclosure is designed to be surface/wall mounted.

SAMPLE ORDER SPECIFICATION:

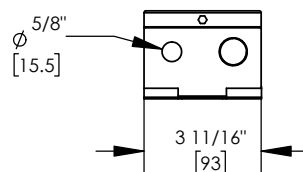
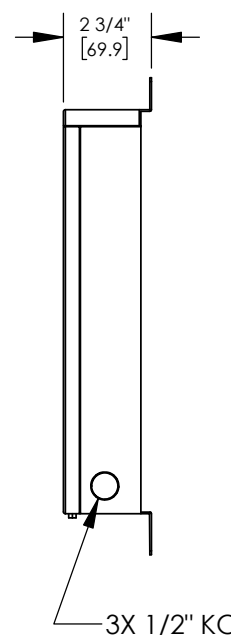
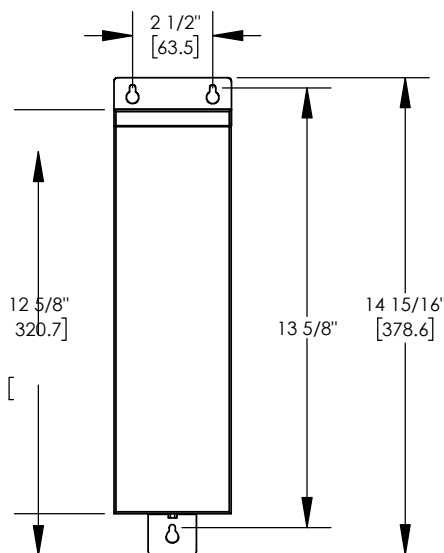
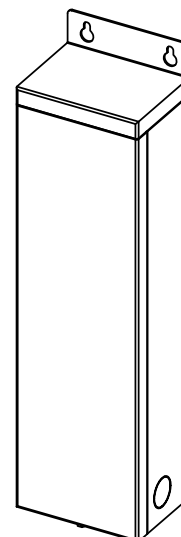
HL-XLD-75W-L40-120-277-0-10V

RATING:

Wet/damp/dry location.



MADE IN THE USA



ORDER SPECIFICATION: _____
 Fixture - Finish - Lamping - Voltage - Options/Access.

PROJECT:

APPROVED:

NOTE:

TYPE:

HEVI LITE, INC.

9714 Variel Ave, Chatsworth, CA 91311
 Tel., (818) 341-8091 - Fax (818) 998-1986
 Web Site <http://www.hevilite.com>

CATALOG NUMBER:

HL-XLD