

SPECIFICATIONS

DESCRIPTION:

Compact LED flood light with anti glare optics.
Conforms to Dark Sky standards. Suitable for wet/damp/dry location installations.

MATERIAL:

Standard overall material is 6061 aluminum.

HL-914 - Machined Aluminum

FINISH:

AA - Anodized Satin Aluminum

AP - Powder Coat Aluminum

BK - Powder Coat Black

BZ - Powder Coat Bronze

WT - Powder Coat White

LED OPTIONS:

Integral high output LED, warm white (3000K CCT) standard, others available.

8LED - 7.5W LED - 650 lumens

3LED - 3.75W LED- 375 lumens

OPTICS:

SP - 14°

NF - 25°

FL - 36°

WFL - 55°

OV - 45° x 15°

-27 - 2700K

-30 - 3000K

-35 - 3500K

DRIVER OPTIONS:

HL-RD - Included remote driver, unless otherwise specified. 120-277V.

L30-914 - 350mA (1-4 **3LED** fixtures)

L40-914 - 700mA (1-4 **8LED** fixtures)

PH -phase dimming (120V only)

0-10 - 0-10V dimming

HL-XLD-LW - High wattage remote driver.

L30 - 350mA (**3LED**)

L40 - 700mA (**8LED**)

-75 - 75 watts

-150 - 150 watts

-200 - 200 watts

0-10 - 0-10V

DD - Designer Dimming

SAMPLE ORDER SPECIFICATION:

HL-914-AA-8LED-FL-30-L40

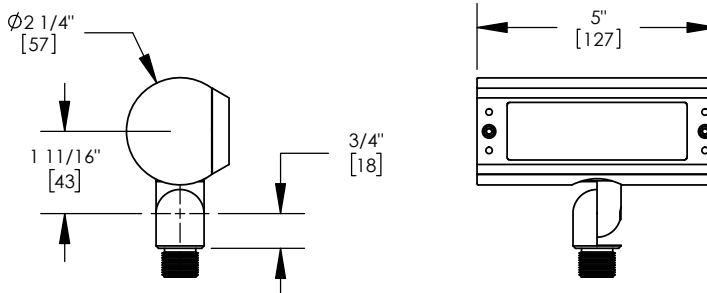
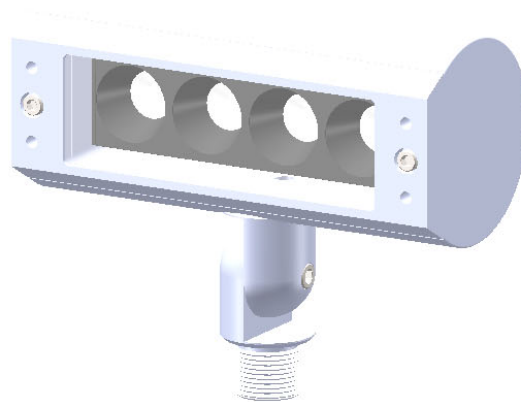
RATING:

Wet/damp/dry location.

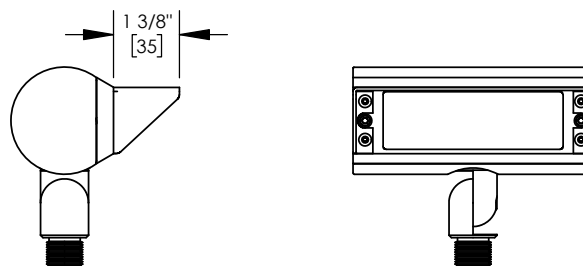


Intertek

MADE IN THE USA



STANDARD



GLARE SHIELD

ORDER SPECIFICATION: _____ - _____ - _____ - _____ - _____
Fixture Finish Lamping Voltage Options/Access.

PROJECT:

APPROVED:

NOTE:

TYPE:

HEVI LITE, INC.

9714 Variel Ave, Chatsworth, CA 91311
Tel., (818) 341-8091 - Fax (818) 998-1986
Web Site <http://www.hevilite.com>

CATALOG NUMBER:

HL-914